

## Customizing LCD messages

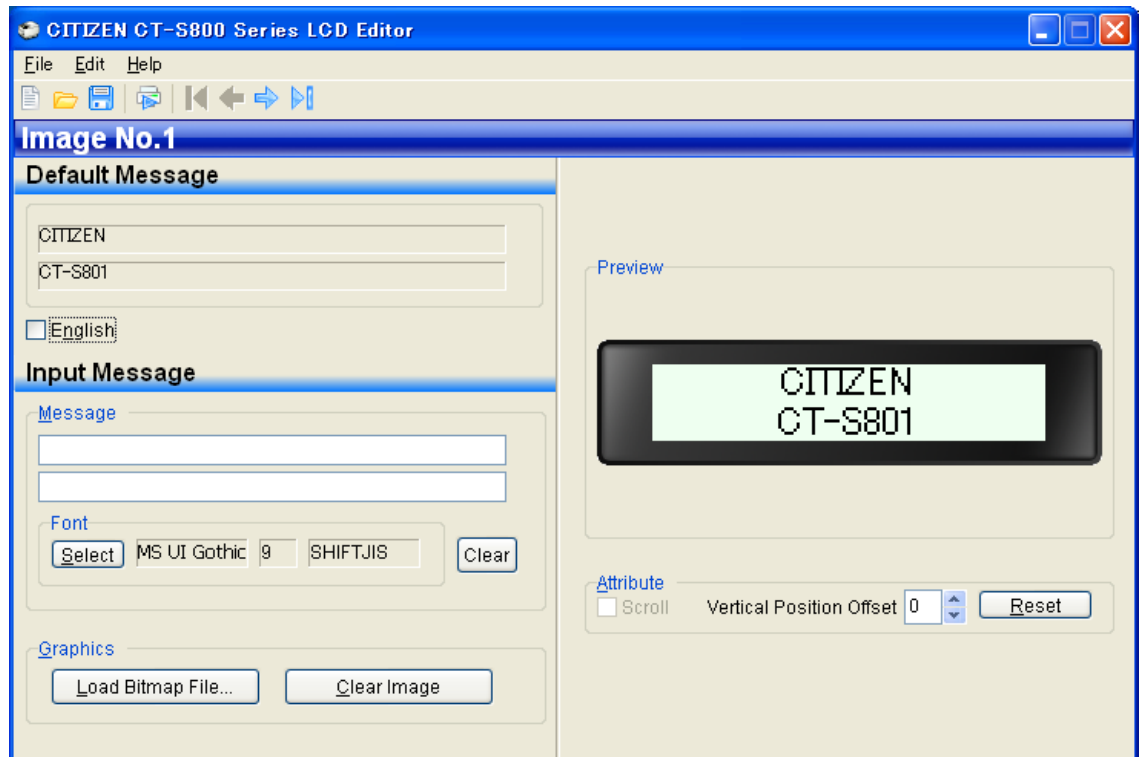
Dec. 25, 2009

This software is to change the LCD messages on CT-S801/851 to unique one. In addition to make character data using TrueType font, it is possible to add simple graphic data.

### **1. Screen and data entry**

The start screen of this software is as right.

Among the messages shown on the printer's LCD, 19 messages can be the target of this software. And ID number from 1 to 19 is assigned to each message.



**Image No.1** shown under the icon menu means first message.

If you want to move to other messages, use "◀", "▶" icon button or function in Edit menu.

**Default Message** shows the original (default) message of the printer LCD

If there is no change, LCD shows the message as it is.

#### Remarks: Language of default message

Printer itself allows choosing language of message from English, French, German, Italian, Spanish, Japanese (Japan model only) and Chinese(China model only).

This software checks language setting of Windows and if above language is used, Default message in the language is shown automatically. In other case, English is chosen. If "English" radio button is selected, English messages will be shown regardless of the Windows language setting.

Entered Japanese or Chinese messages might be shown as strange characters in some condition.

**Input Message** is the area to enter the data if you want to change the message.

### Message

Text message should be entered into the white boxes of Message area.

Entered data is cleared by pressing **Clear** button.

The message consists of either 1 line or 2 lines. If the text is entered into only upper white box, it is automatically handled as 1 line message and if the text is entered to lower white box, it is automatically handled as 2 lines message.

The message longer than LCD screen is shown by horizontal scrolling but it is within double width of LCD screen.

"Scroll" in Attribute area shows the check mark for the longer message of horizontal scrolling.

### Font

Font setting dialogue is shown by pressing **Select** button and TrueType font setting can be changed.

Font type, style, size and character set can be set.

If you want to change all the font setting of the messages entered in the software, please use the "Change Font in All Image" function in Edit menu.

Remarks: On this software, font setting of Default Message can be changed, but actual default message of the printer cannot be changed.

### Graphics

To show the graphic data, press **Load Bitmap File** button and choose the prepared graphic data file. By pressing **Clear Image** button, added graphic data is cleared.

The acceptable data format is 2 color BMP format.

Remarks: It is necessary to pay attention that graphic data and character data is not overlapped each other.

This software can show up to 128 x 25 dots. Prepared graphic data should be smaller than that.

If the text message is shown in horizontal scrolling, graphic data in lower half screen also moves horizontally.

### Preview

Simulated message is shown here based on the Default Message or Input Message.

### Attribute

The check mark is shown at "Scroll" for the longer message of horizontal scrolling.

Vertical position of text data can be adjusted by "Vertical Position Offset".

## **2. Save the created data**

When you finish entering the custom messages, it is recommended to save the entered data. (This is not essential job to do)

From menu, "File"=>"Save As" then you see "Save As" dialog. Enter file name and press "Save" button.

To use saved messages in the next time, from menu, "File"=>"Open" and you will see "Open" dialog. Choose the saved file and press "Open" button. Then saved messages can be seen at each message number.

## **3. Register created data to printer**

To show the created message on the printer's LCD screen, it is necessary to register(save in the non-volatile memory of the printer) the data.

There are 2 ways to register created data to the printer.

### 1) Register to the printer directly through Windows driver

From menu, "File"=>"Send To Printer"=>"Send All Images" then "Print Setup" dialog comes up. If the Windows driver for the printer is ready to print, choose the printer and press "OK" button. Then all the messages are registered to the printer.

Following the same procedure from "File"=>"Send To Printer"=>"Send This Images", single message shown on the software is registered to the printer.

### 2) Create the data to register the messages

From menu, "File"=>"Create Command File"=>"Write All Images", then "Save As" dialog comes up. Enter file name and press "Save" button.

If you send the saved data to the printer, all the messages are registered to the printer.

Following the same procedure from "File"=>"Create Command File"=>"Write This Image", the data to register message is created.

## **4. Delete the registered data**

There are 2 ways to delete (clear from non-volatile memory) the registered data from the printer.

### 1) Delete the registered messages directly from the printer through Windows driver

From menu, "File"=>"Send To Printer"=>"Send Deleting All Images" then "Print Setup" dialog comes up. If the Windows driver is ready to print to the printer, choose the printer and press "OK" button. Then all the registered messages to the printer are deleted.

Following the same procedure from "File"=>"Send To Printer"=>"Send Deleting this Images", single message shown on the software is deleted from the printer.

### 2) Create the data to delete the messages from the printer

From menu, "File"=>"Create Command File"=>"Write Deleting All Images" then "Save As" dialog comes up. Enter file name and press "Save" button.

If you send the saved data to the printer, all the messages registered to the printer are deleted.

Following the same procedure from "File"=>"Create Command File"=>"Write Deleting This Image", the data to delete the message on the screen is created.

## 5. Details of the target messages

The details of 19 messages that allow to be changed are as follows.

No.	Event/Status	Default message (English)	Lines	Scroll
1	Booting up	CITIZEN CT-S801	2	Yes
2	Stand-by (Ready)	Online	1	No
3	Waiting key enter for Macro	Press a key	1	No
4	Waiting for Macro to execute	Executing macro	1	No
5	Waiting data in buffer to print	Data in buffer	1	No
6	Paper end	Paper end Please replace paper roll.	2	Yes
7	Front cover open	Front cover open Please close front cover.	2	Yes
8,9	Paper cover open	Paper cover open Please close paper cover.	2	Yes
10	Cutter lock	Cutter lock Open paper cover & remove jam.	2	Yes
11	Black mark error	Black mark error Please check the paper	2	Yes
12	Print head hot	Head overheat Please wait, will continue	2	Yes
13	Memory error	Memory Error	1	No
14	Print head error	Head Error Please contact your dealer	2	Yes
15	Motor error	Motor Error Please contact your dealer	2	Yes
16	Low voltage error	L Voltage Error Please contact your dealer	2	Yes
17	High voltage error	H Voltage Error Please contact your dealer	2	Yes
18	Cash drawer voltage error	Drawer Error Please contact your dealer	2	Yes
19	System error	System Error Please contact your dealer	2	Yes

Remarks:

8 & 9 are same message. "8" is for cover open at stand-by. "9" is for cover open during printing.

"Lines" means the number of message lines shown in the LCD. It cannot be changed.

If "No" is shown at "Scroll" column, that message is not allowed to be long for horizontal scroll...