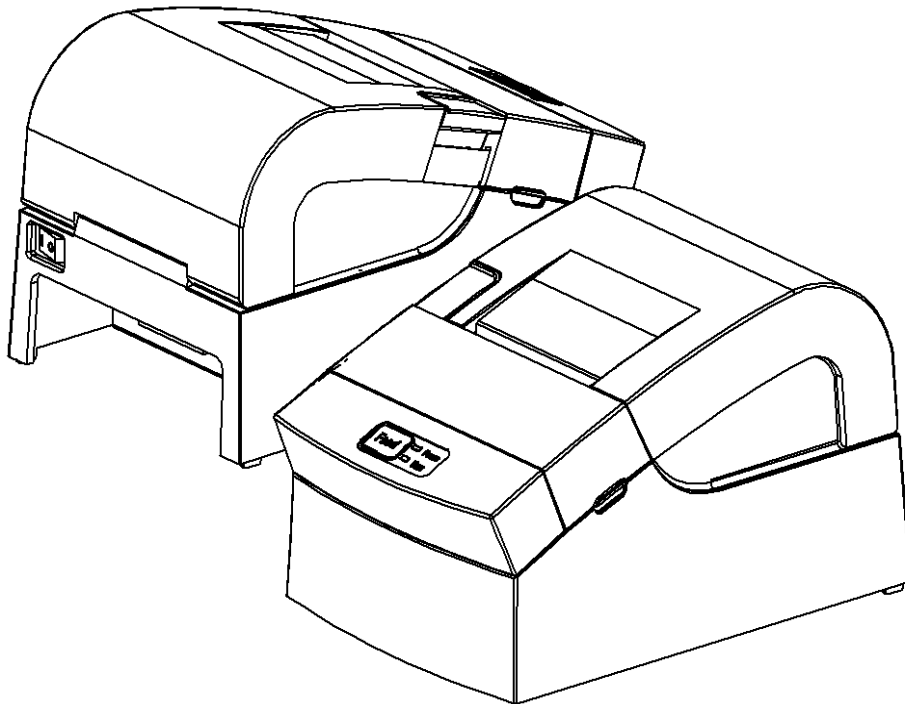


METAPACE

Windows Driver Manual **Metapace T-4**

Thermal Printer
Rev. 1.00



<http://www.metapace.com>

■ Table of Contents

1. Manual Information.....	3
2. Operating System (OS) Environment.....	3
3. Windows Driver Preparation.....	3
4. Windows Driver Installation.....	4
4-1 Installing on Windows 2000.....	4
4-1-1 Via Serial Port.....	4
4-1-2 Via USB Port.....	8
4-2 Installing on Windows XP/2003 Server.....	12
4-2-1 Via Serial Port.....	12
4-2-2 Via USB Port.....	16
4-3 Installing on Windows VISTA/2008 Server/7.....	23
4-3-1 Via Serial Port.....	23
4-3-2 Via USB Port.....	27
5. Detailed Windows Driver Settings.....	31
5-1 Paper Supply Method.....	31
5-2 Paper Size.....	34
5-3 NV Image & Additional Commands.....	35
5-4 NV Image Download.....	37
5-5 Open Drawer.....	42
5-6 VMSM.....	44
5-6-1 Printer Communication Setting.....	44
5-6-2 Getting the Memory Switch Status of the Printer.....	47
5-6-3 Setting the memory switch status of the Printer.....	49
5-6-4 Using the Command Test Editor.....	52
6. Windows Driver Specifications.....	53
6-1 Fonts.....	53
6-2 Special Functions.....	54
6-3 Barcodes.....	56
7. Use of Windows Driver.....	57
7-1 Use of Visual Basic.....	57
7-1-1 Windows Driver Selection.....	57
7-1-2 Test Printing.....	58
7-1-3 Barcode Printing.....	58
7-2 Use of WordPad.....	59
7-2-1 WordPad Environment Settings.....	59
7-2-2 Text Printing.....	59
7-2-3 Barcode Printing.....	60

1. Manual Information

This Windows Driver Installation Manual provides information on installation, detailed specifications, and usage of the printer's Windows Driver according to PC operating system (OS).

Metapace makes continual efforts to improve the functions and quality of the products. The specifications and contents of the manual are subject to change without prior notice for this reason.

2. Operating System (OS) Environment

The following operating systems are supported for usage.

- Microsoft Windows 2000
- Microsoft Windows XP (32bit/64bit)
- Microsoft Windows 2003 Server (32bit/64bit)
- Microsoft Windows Embedded For Point Of Service
- Microsoft Windows Embedded POS Ready 2009
- Microsoft Windows Embedded POS Ready 7
- Microsoft Windows VISTA (32bit/64bit)
- Microsoft Windows 2008 Server (32bit/64bit)
- Microsoft Windows 7 (32bit/64bit)

3. Windows Driver Preparation

Windows driver is included in the CD that is shipped with the product, and the latest version can be downloaded from the home page of Metapace.

www.metapace.com

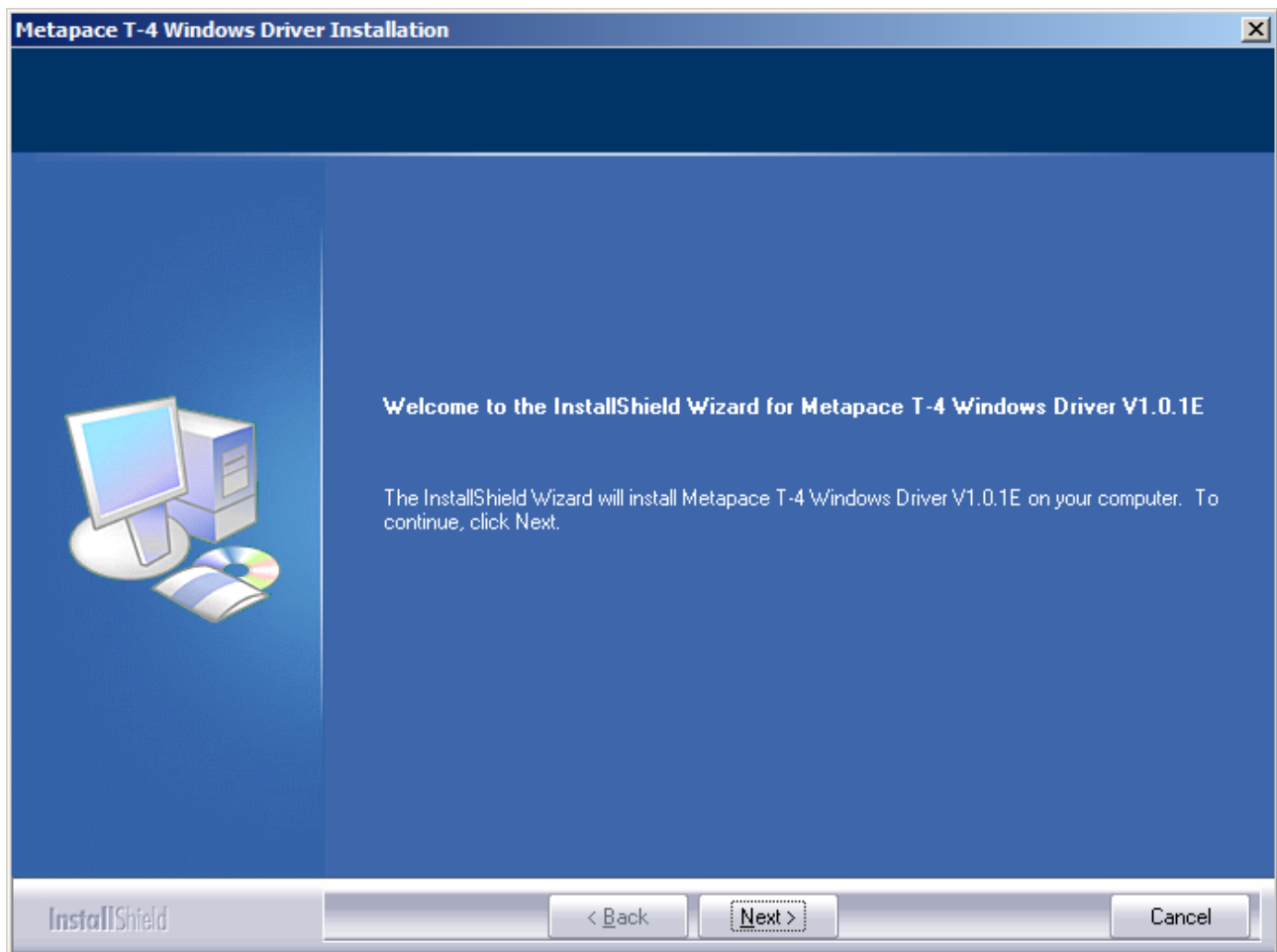
If using the enclosed CD, click the "Windows Driver" button to find and run the Windows Driver installation file.

4. Windows Driver Installation

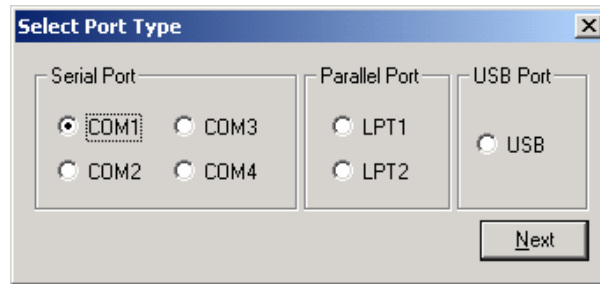
4-1 Installing on Windows 2000

4-1-1 Via Serial Port

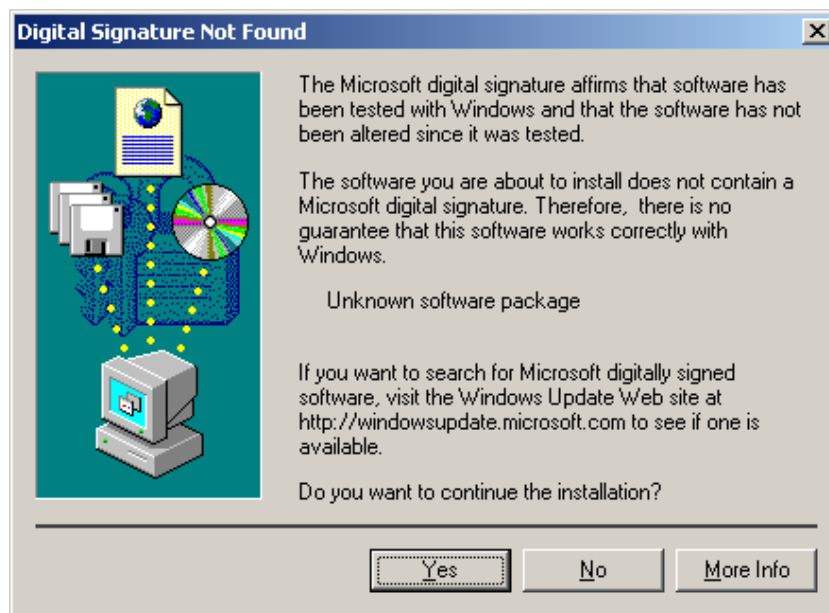
- 1) Double-click the Windows Driver installation file.
- 2) Click the “Next” button.



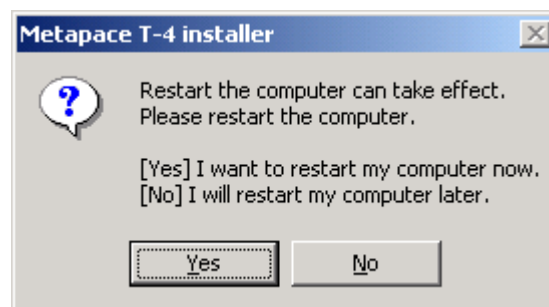
3) Select the COM port to be used and click the “Next” button.



4) When the following message box appears, click the “Yes” button.



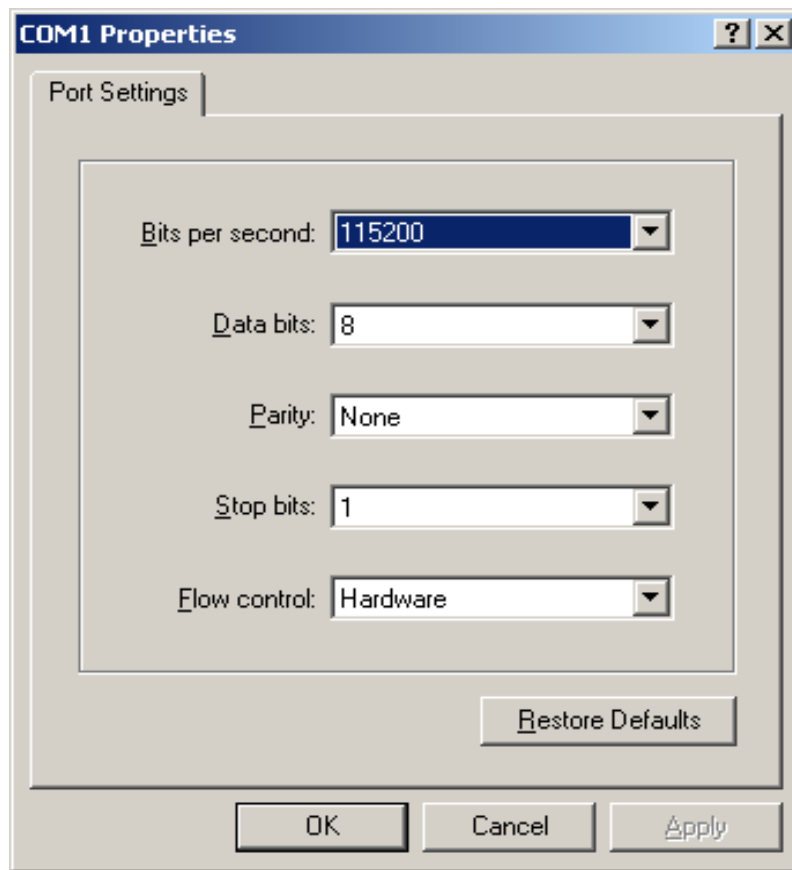
5) Clicking the "Yes" button will reboot the PC.



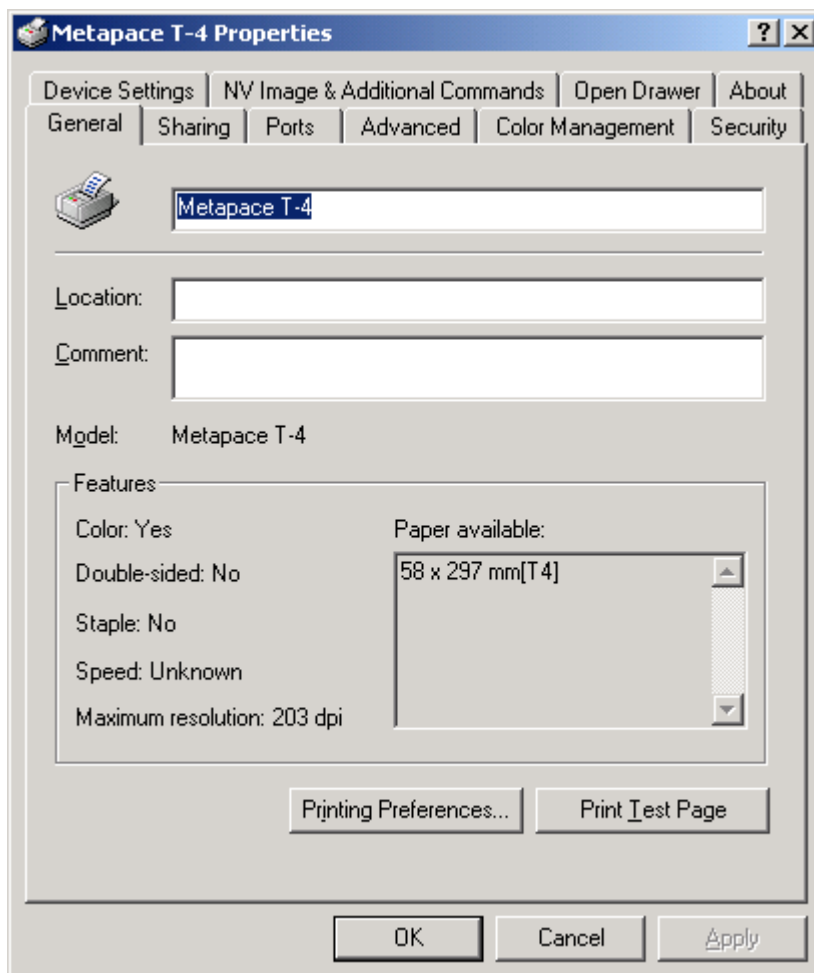
6) Open the printer properties window in the Windows OS.

7) Click the “Port Settings” button in the “Ports” tab.

- 8) Match the communication settings to those of the printer.
(The communication settings of the printer can be performed by conducting a self-test.)



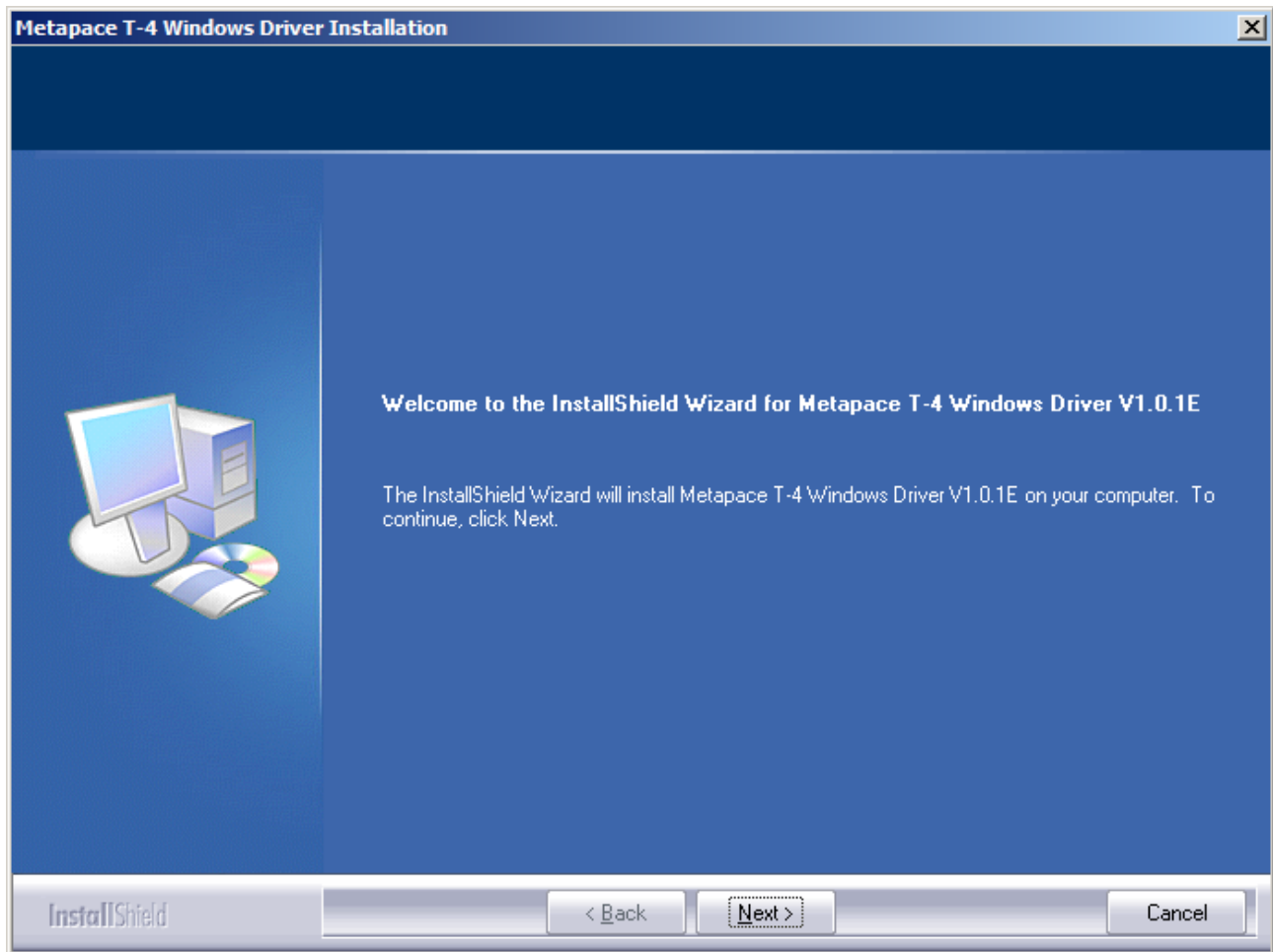
9) Click the “Print Test Page” button and check printing status.



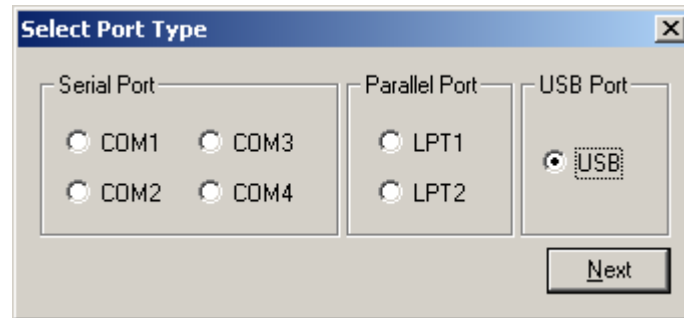
10) Proper installation of the driver is indicated if the test page is printed normally.

4-1-2 Via USB Port

- 1) Double-click the Windows Driver installation file.
- 2) Click the “Next” button.



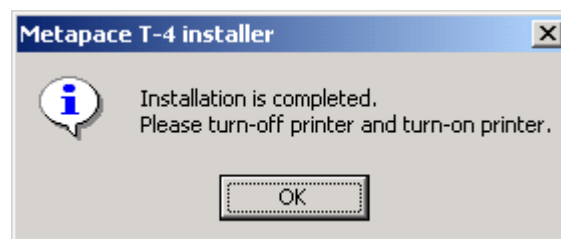
3) Select USB and click the "Next" button.



4) When the following message box appears, click the "Yes" button.

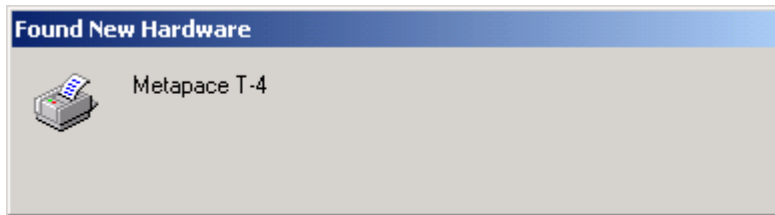


5) Click the "OK" button.

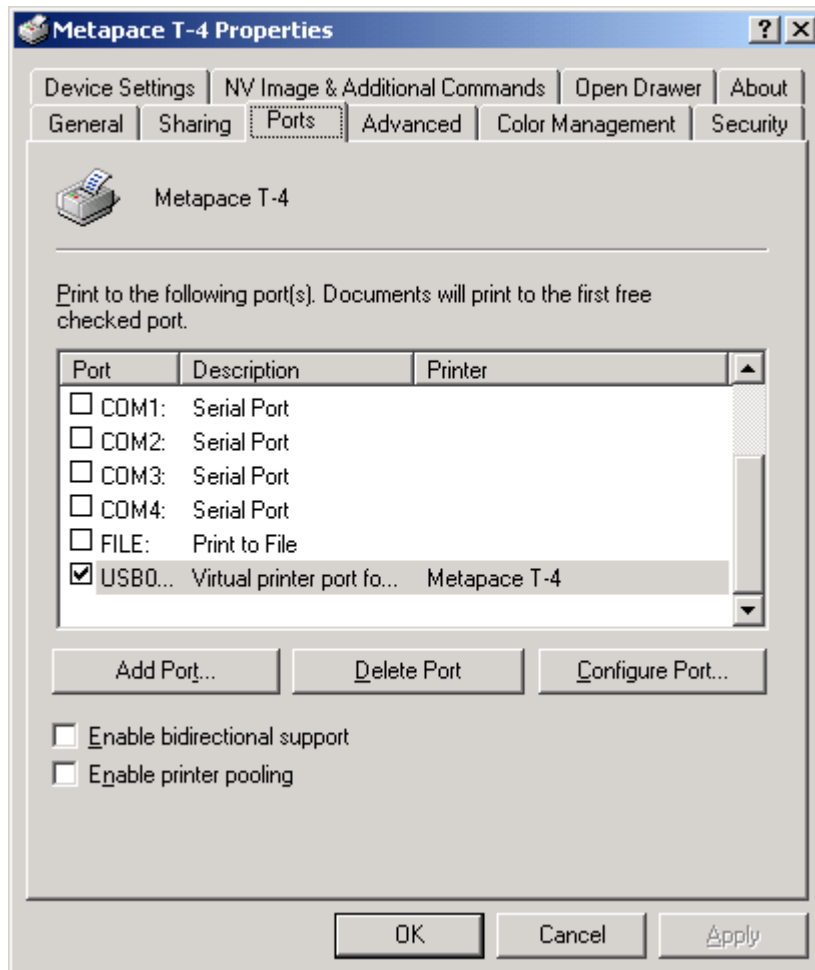


6) Turn on the printer.

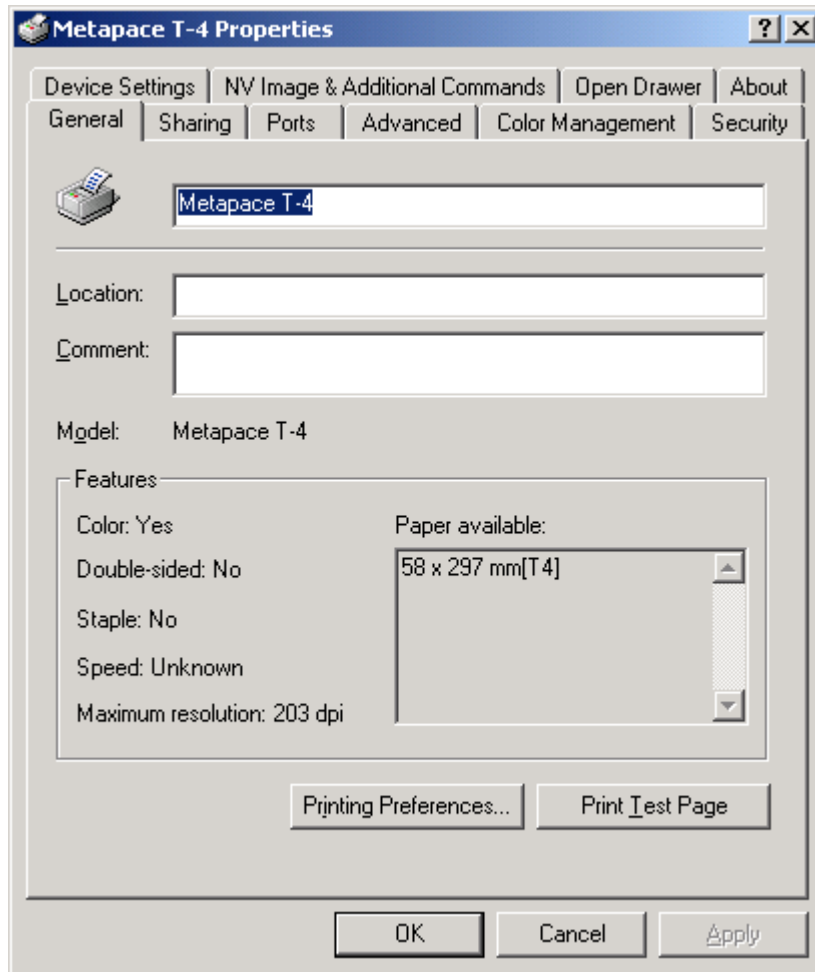
7) The Windows Driver is automatically installed.



8) The USB Port setting can be confirmed in the Windows Driver properties.



9) Click the “Print Test Page” button and check printing status.

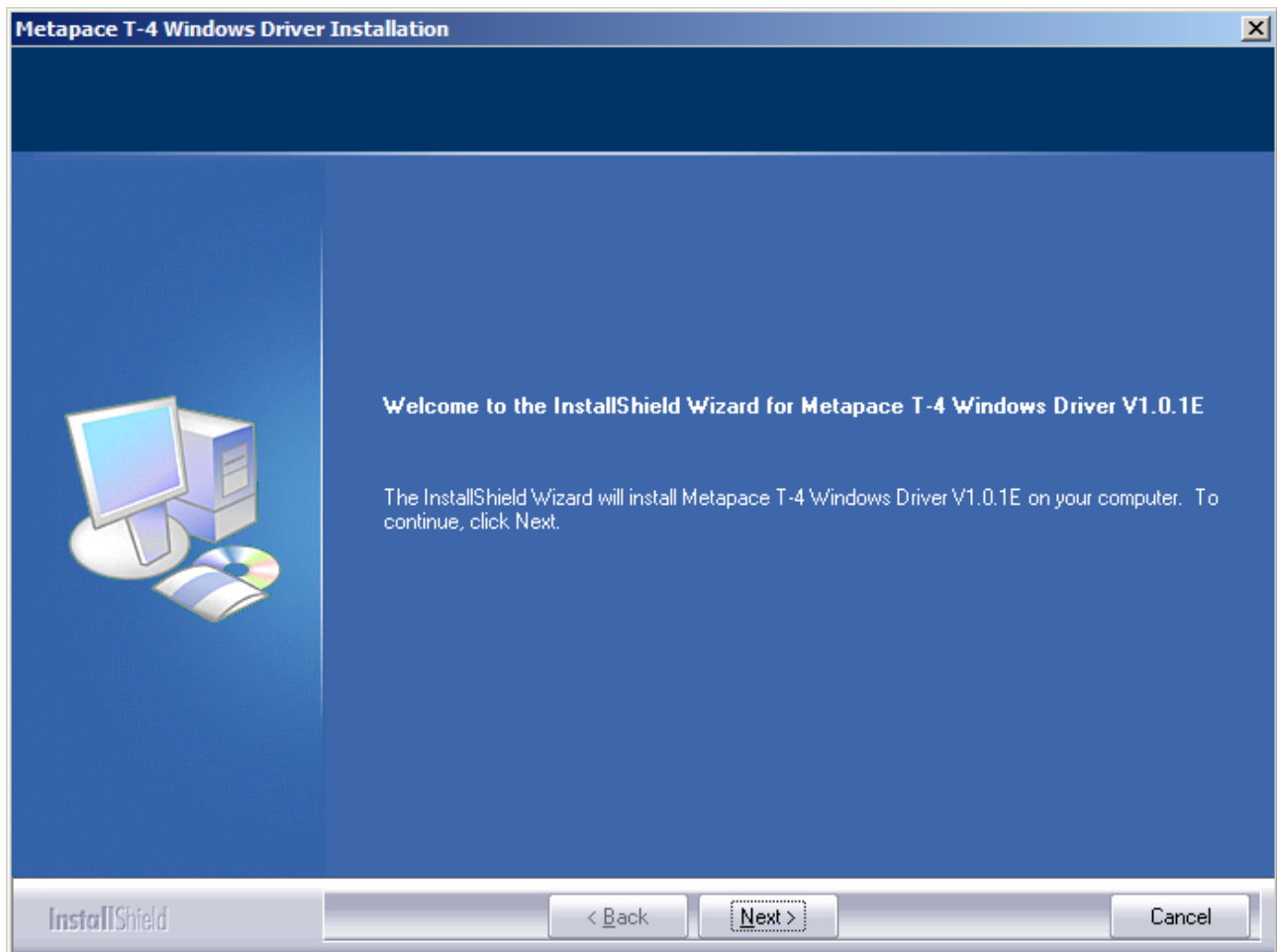


10) Proper installation of the driver is indicated if the test page is printed normally.

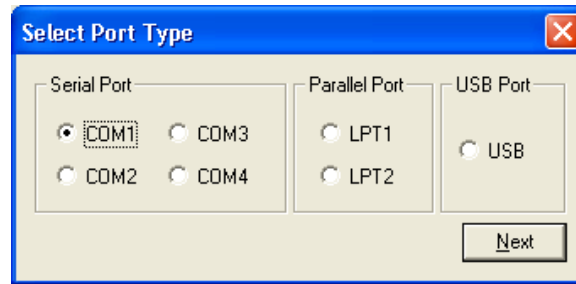
4-2 Installing on Windows XP/2003 Server

4-2-1 Via Serial Port

- 1) Double-click the Windows Driver installation file.
- 2) Click the “Next” button.



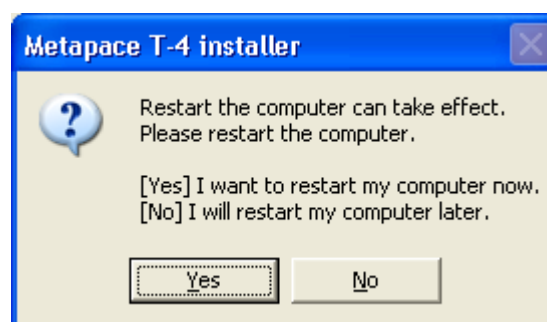
3) Select the COM port to be used and click the “Next” button.



4) When the following message box appears, click the “Continue Anyway” button.



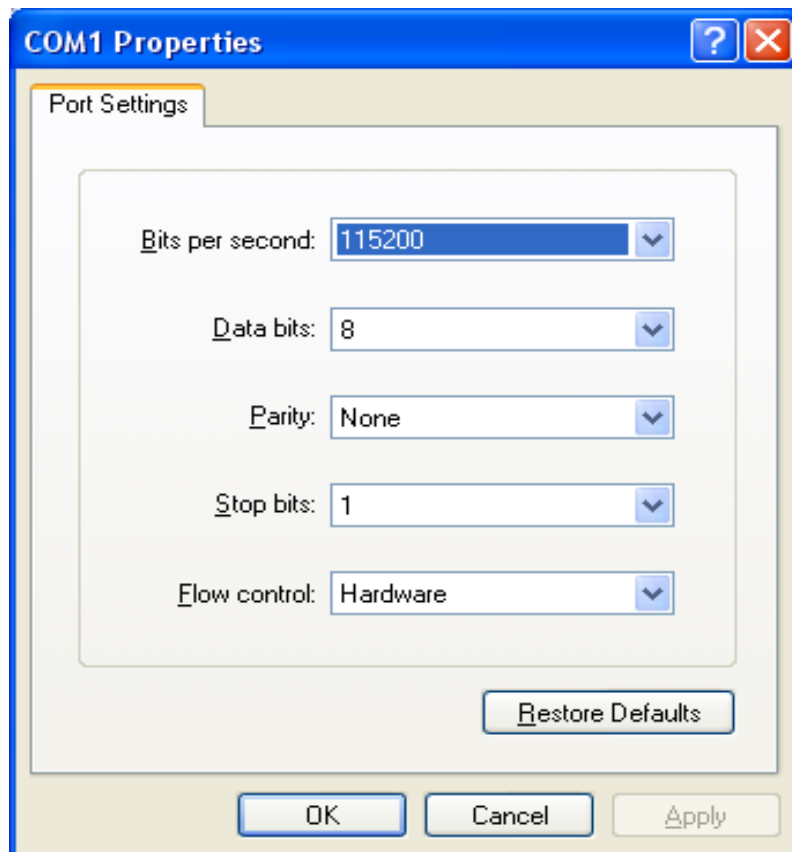
5) Clicking the "Yes" button will reboot the PC.



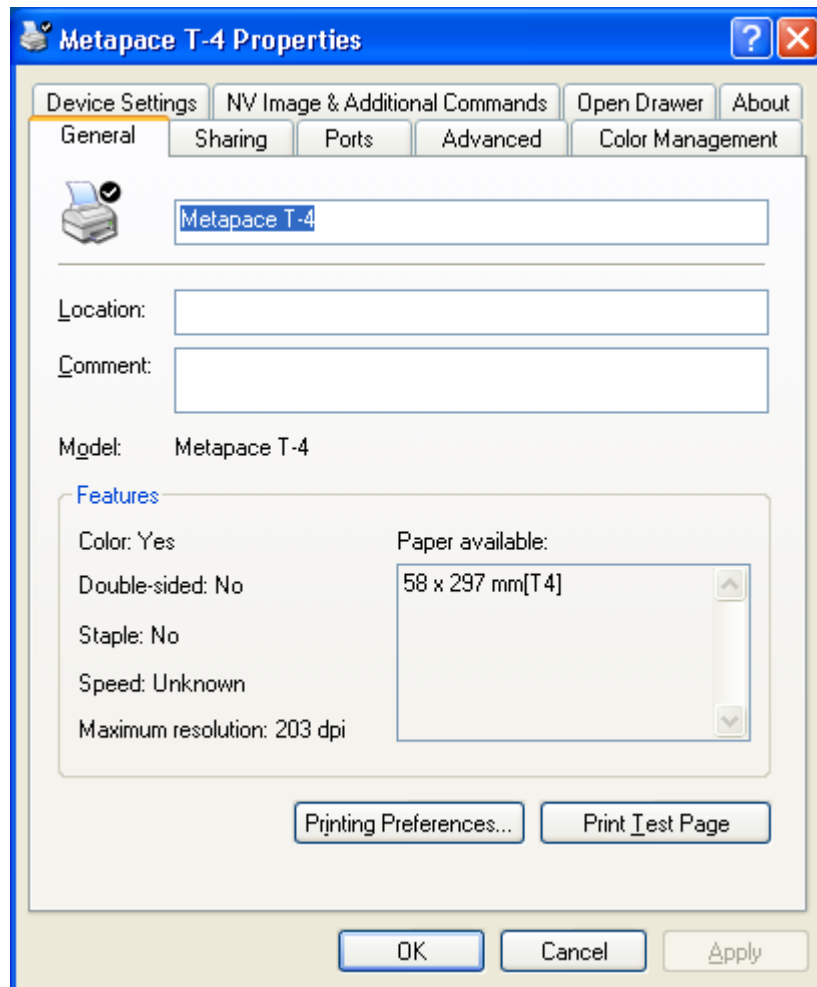
6) Open the printer properties window in the Windows OS.

7) Click the “Port Settings” button in the “Ports” tab.

- 8) Match the communication settings to those of the printer.
(The communication settings of the printer can be performed by conducting a self-test.)



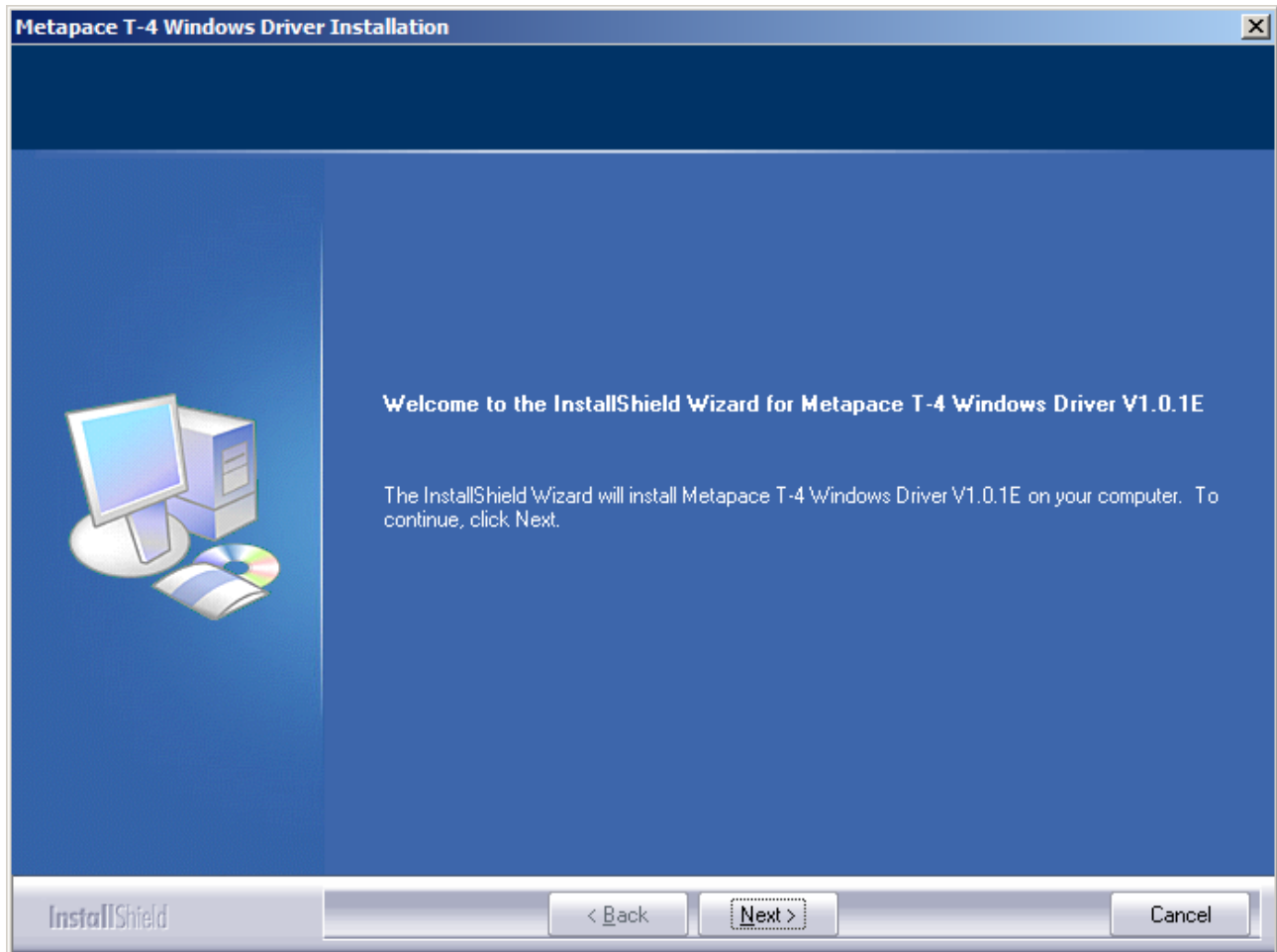
9) Click the “Print Test Page” button and check printing status.



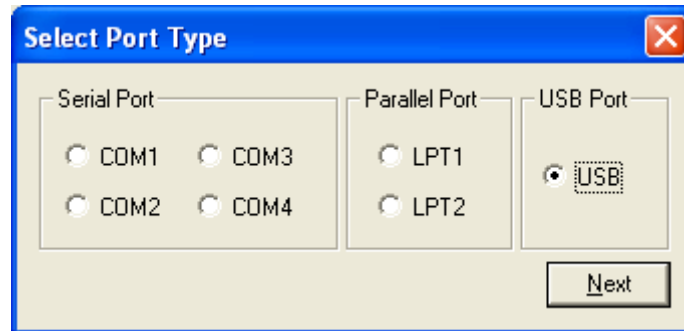
10) Proper installation of the driver is indicated if the test page is printed normally.

4-2-2 Via USB Port

- 1) Double-click the Windows Driver installation file.
- 2) Click the “Next” button.



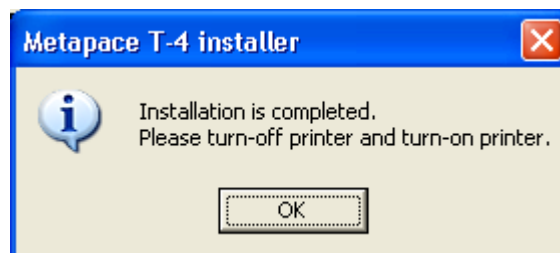
3) Select USB and click the "Next" button.



4) When the following message box appears, click the "Continue Anyway" button.



5) Click the "OK" button.

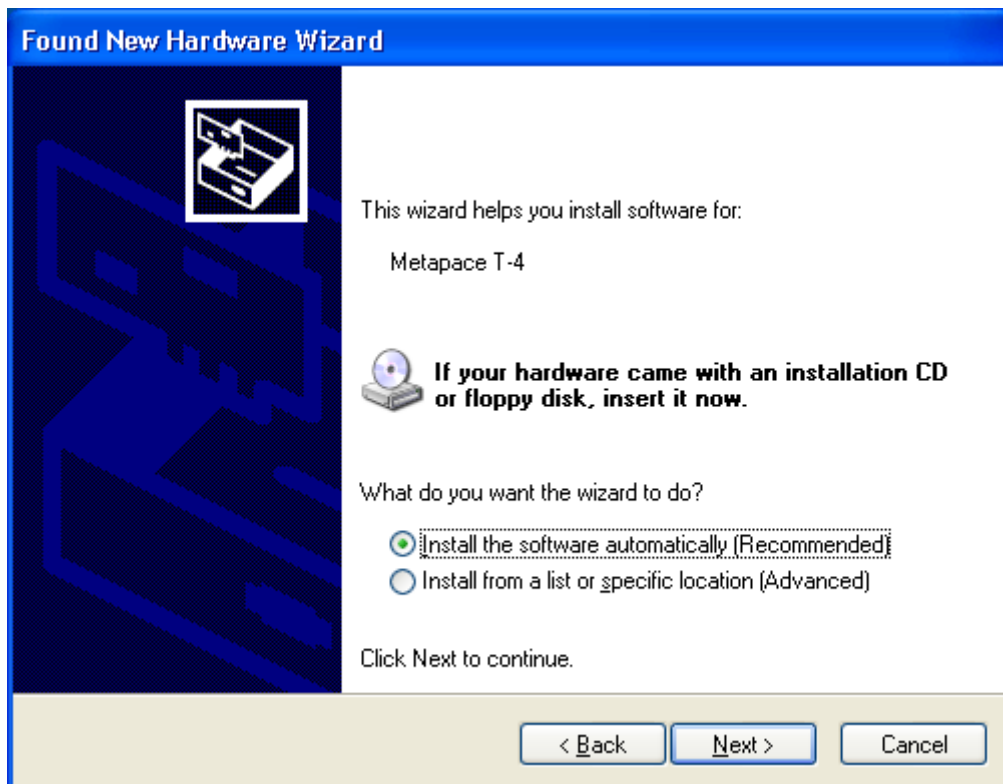


6) Turn on the printer.

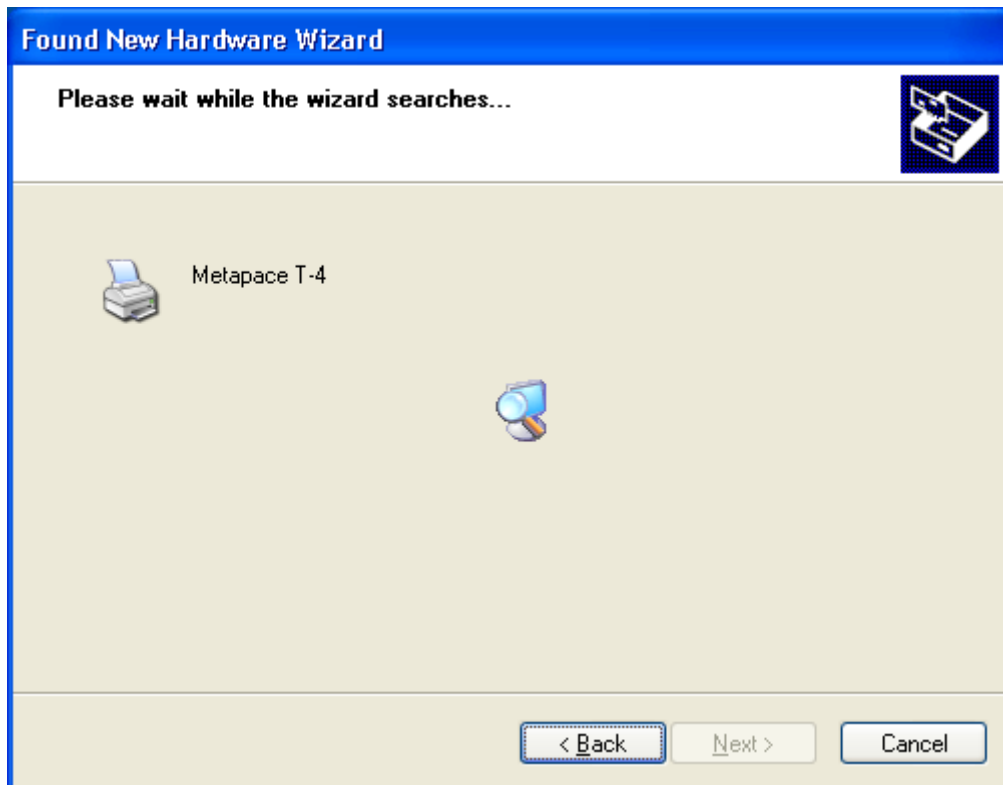
- 7) When the New Hardware Wizard appears for the installation of the Windows Driver, select the option as shown below and click the “Next” button.



- 8) Click the “Next” button.



9) Click the “Next” button.



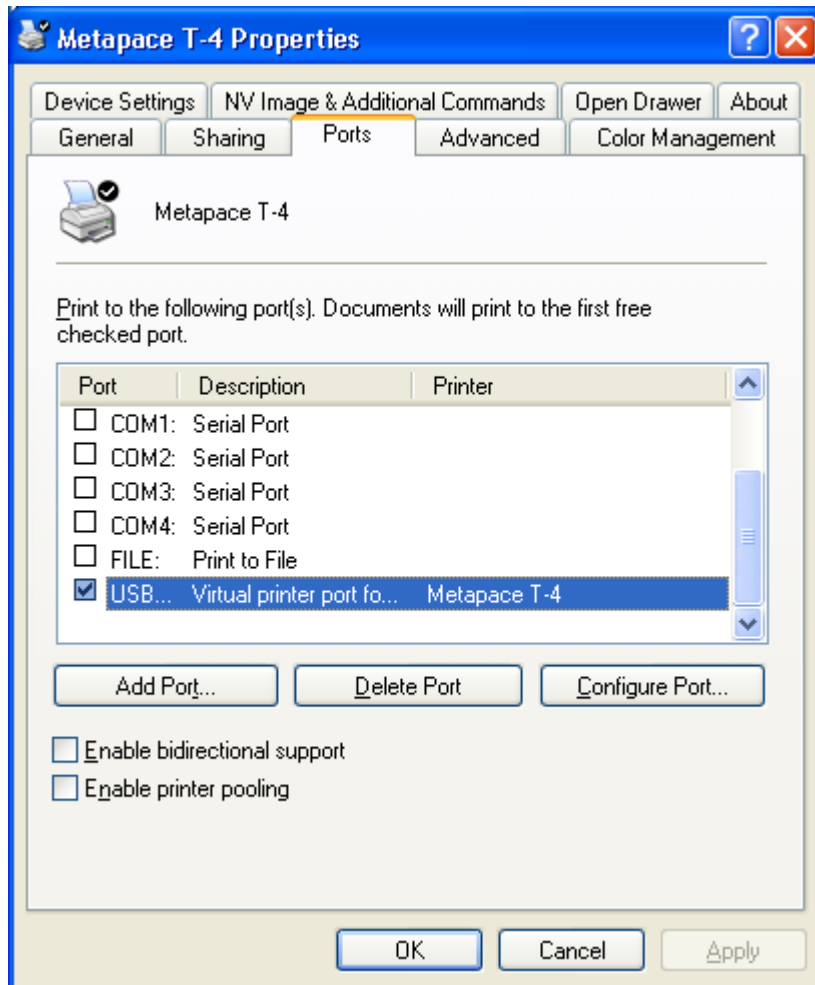
10) Click the “Continue Anyway” button.



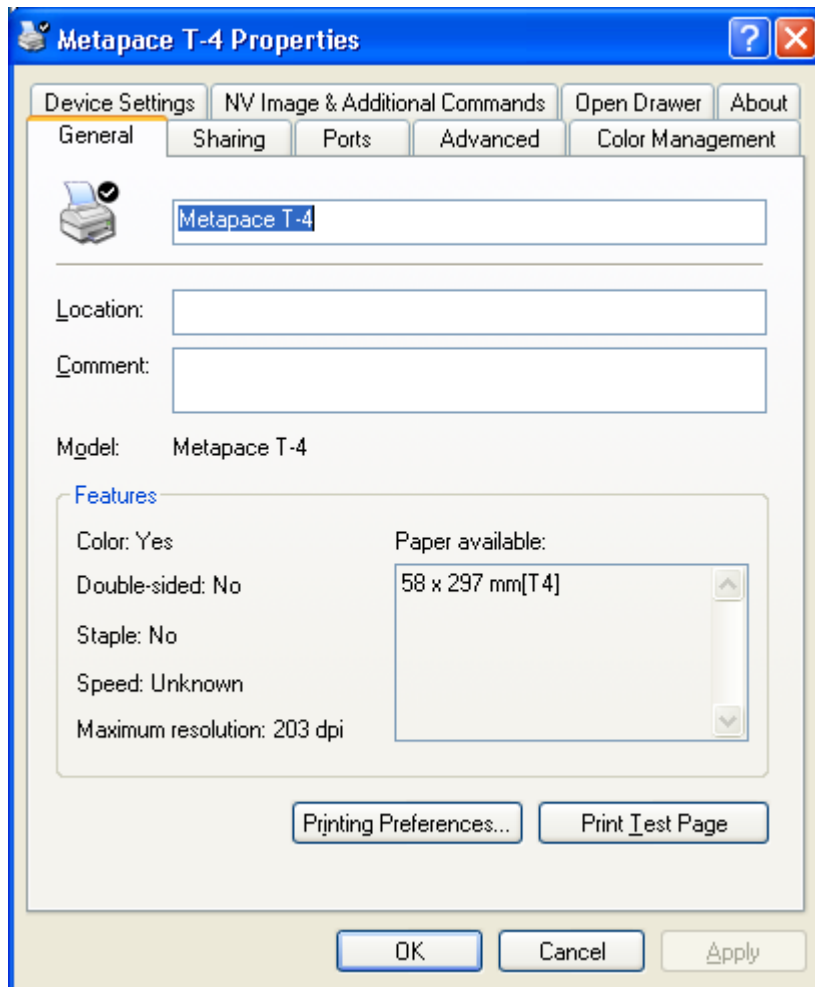
11) Click the “Finish” button.



12) The USB Port setting can be confirmed in the Windows Driver properties.



13) Click the “Print Test Page” button and check printing status.



14) Proper installation of the driver is indicated if the test page is printed normally.

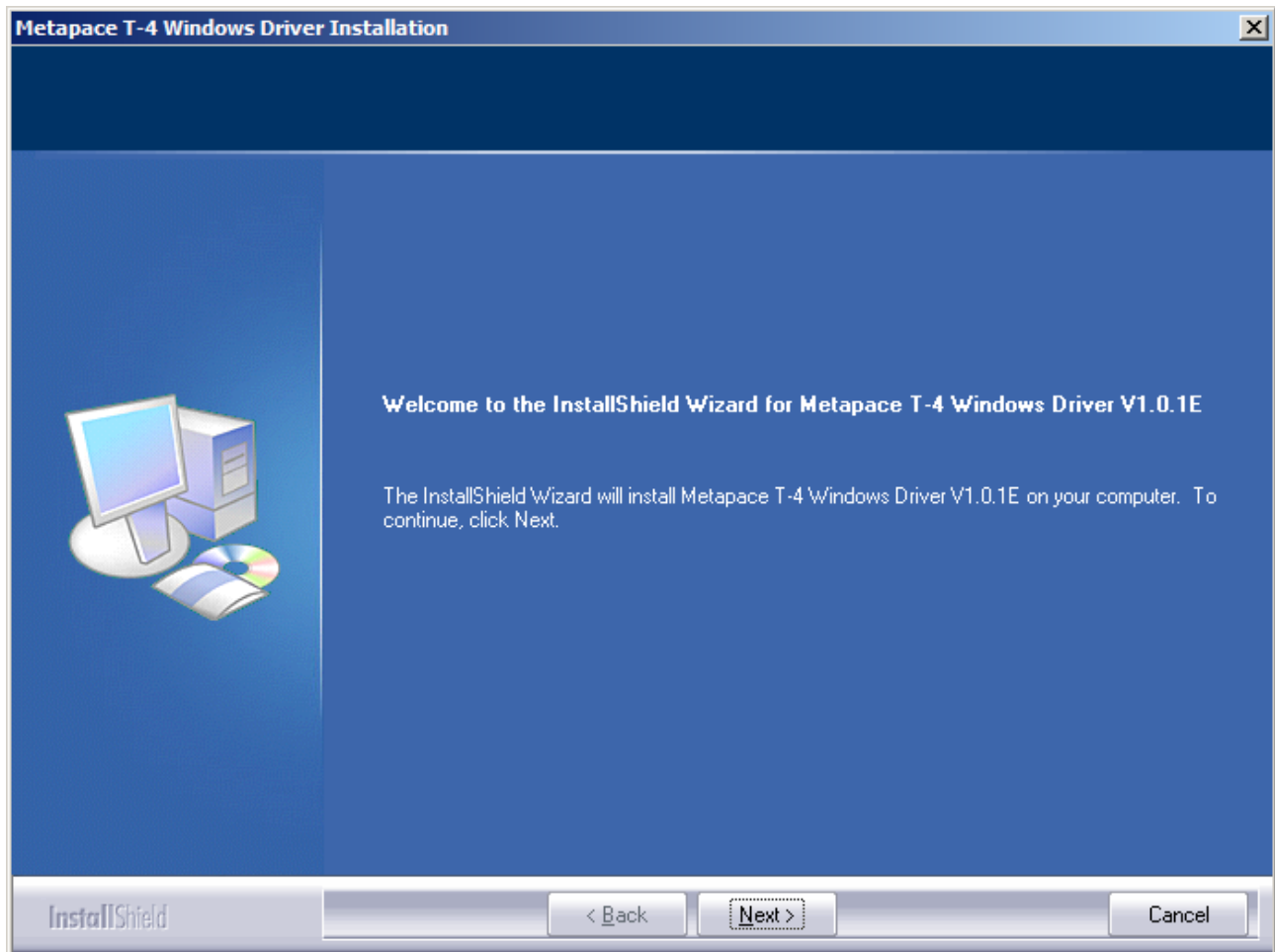
4-3 Installing on Windows VISTA/2008 Server/7

*** Note: Please turn off UAC (User Account Control) prior to setting up configurations or properties in Windows driver.**

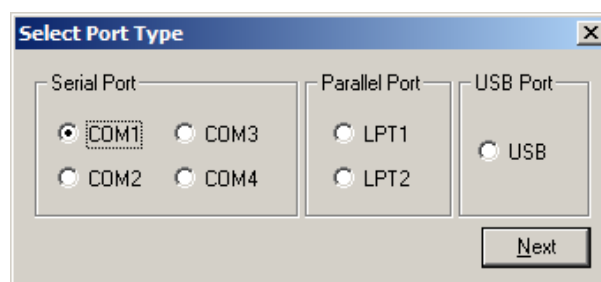
4-3-1 Via Serial Port

1) Double-click the Windows Driver installation file.

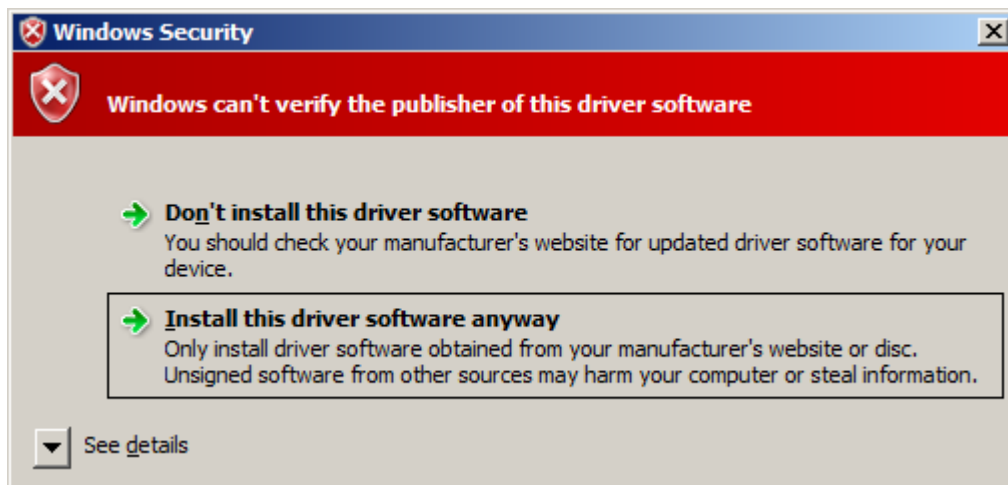
2) Click the “Next” button.



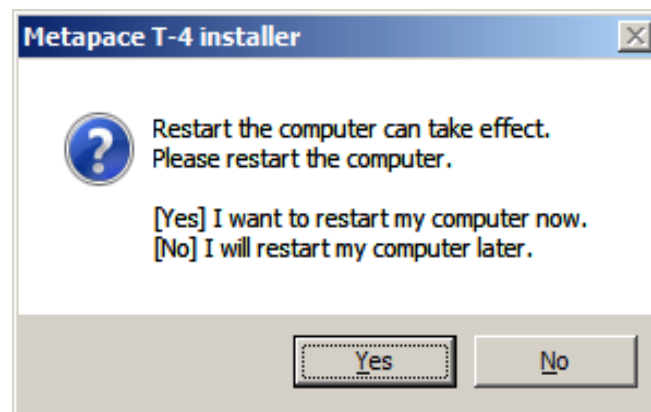
3) Select the COM port to be used and click the “Next” button.



- 4) When the following message box appears, click the “Install this driver software anyway” button.

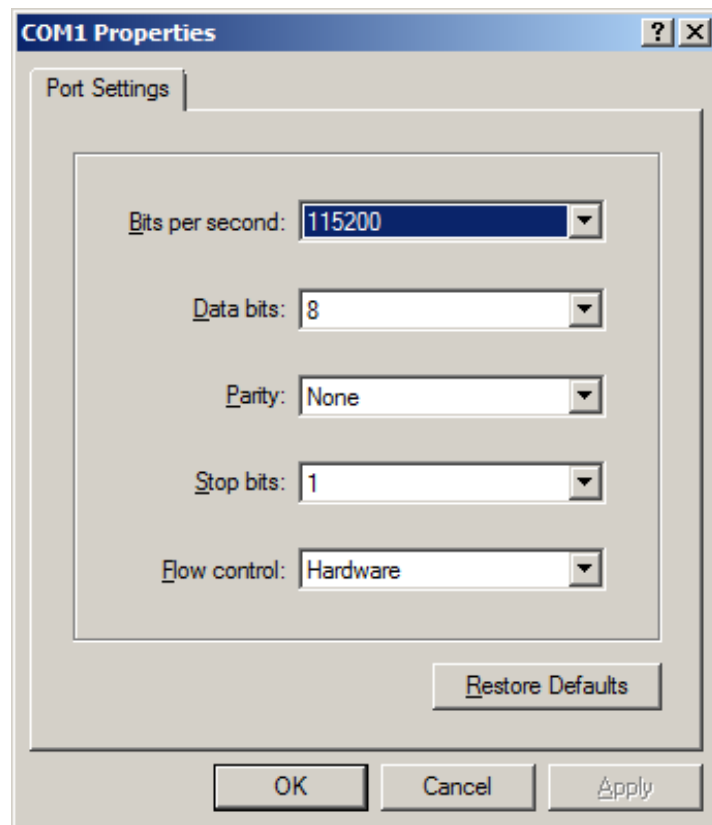


- 5) Clicking the "Yes" button will reboot the PC.

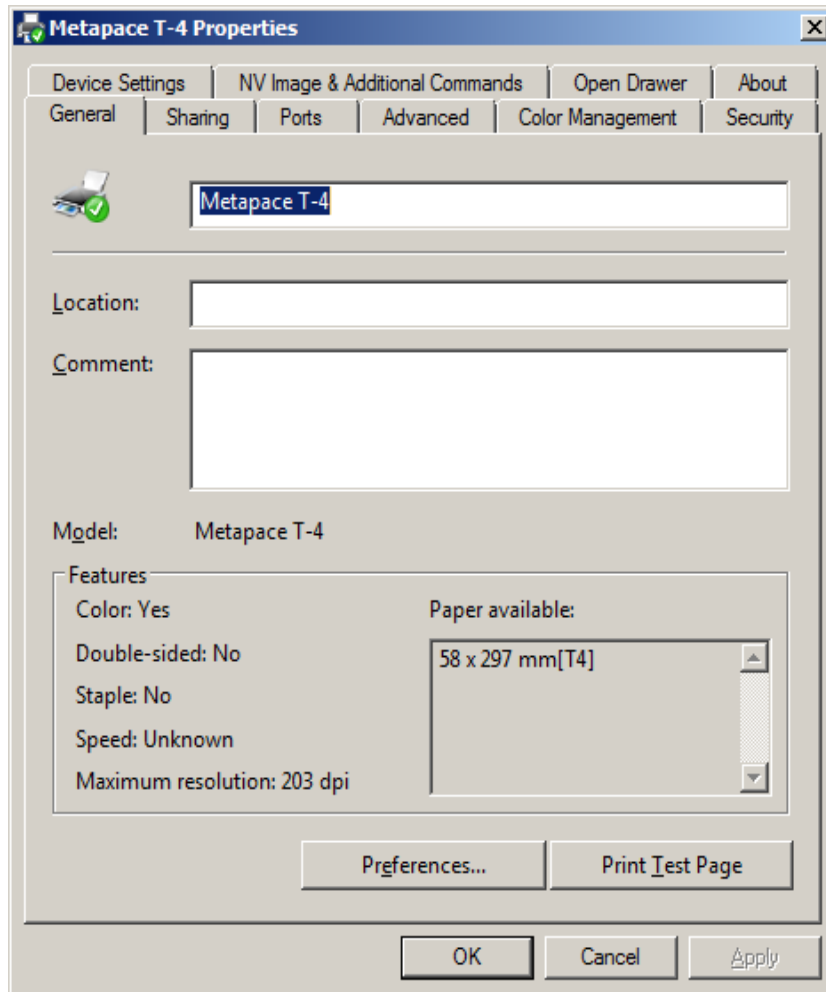


- 6) Open the printer properties window in the Windows OS.
- 7) Click the “Port Settings” button in the “Ports” tab.

- 8) Match the communication settings to those of the printer.
(The communication settings of the printer can be performed by conducting a self-test.)



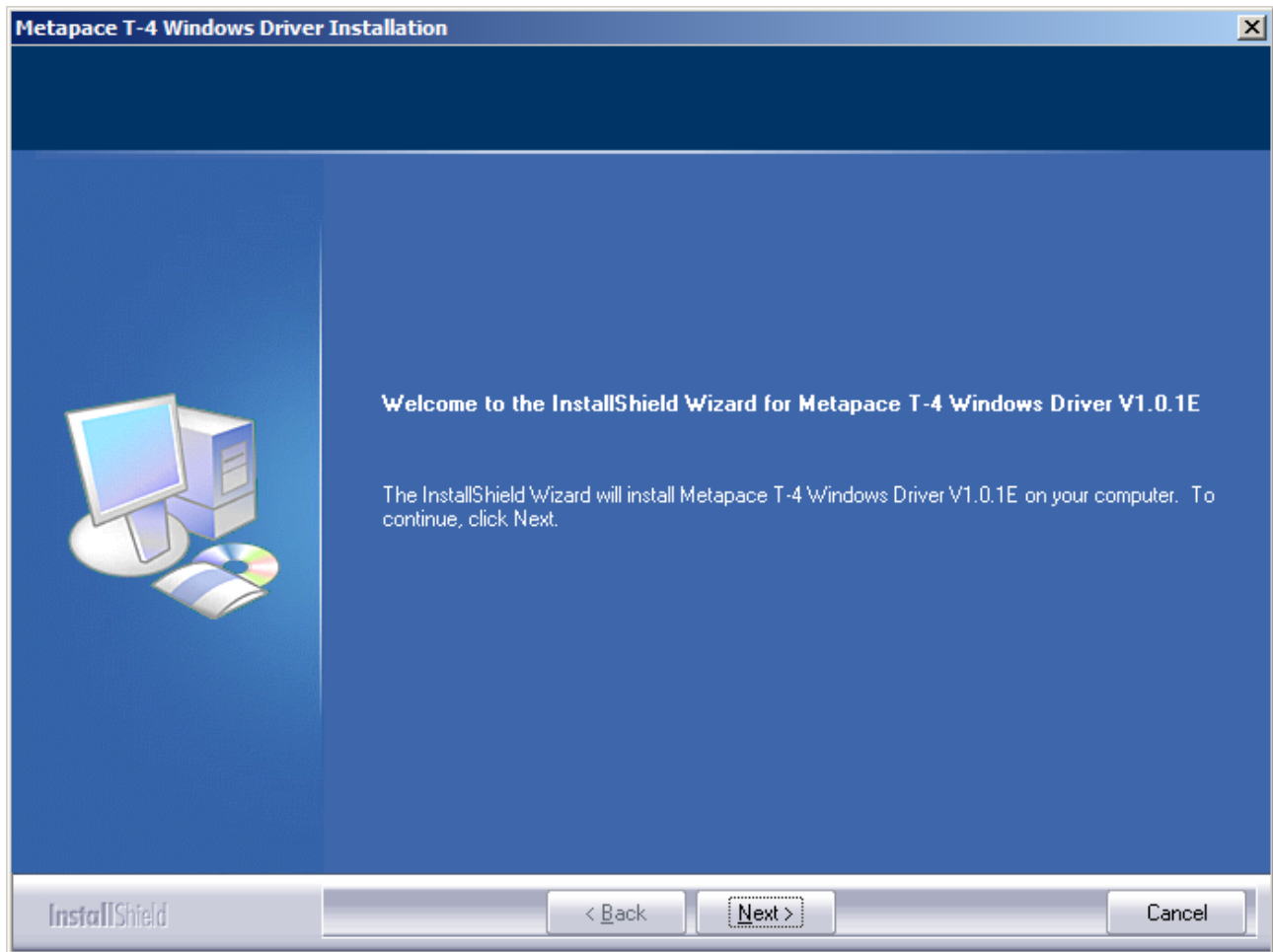
9) Click the “Print Test Page” button and check printing status.



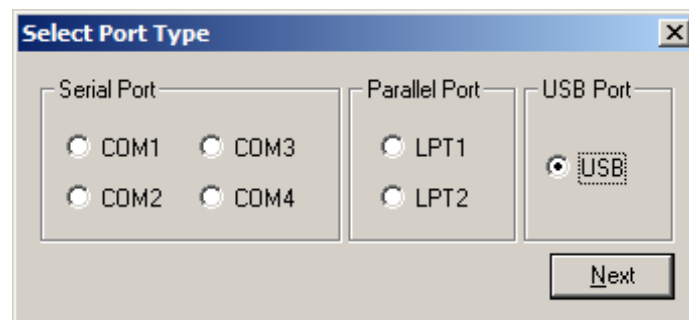
10) Proper installation of the driver is indicated if the test page is printed normally.

4-3-2 Via USB Port

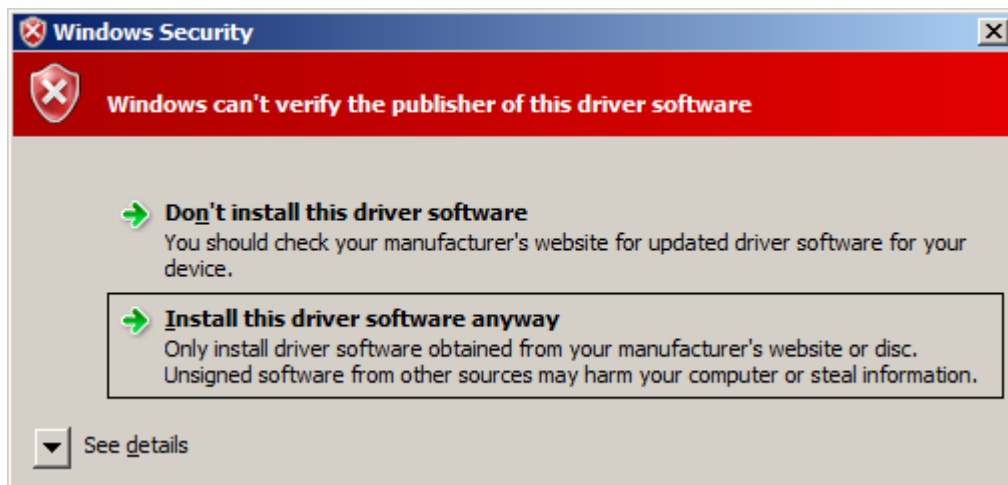
- 1) Double-click the Windows Driver installation file.
- 2) Click the "Next" button.



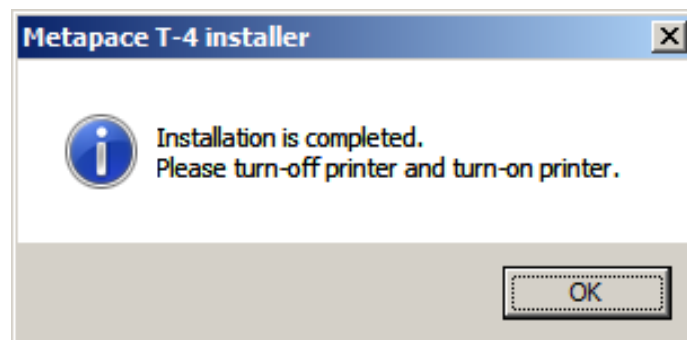
- 3) Select USB and click the "Next" button.



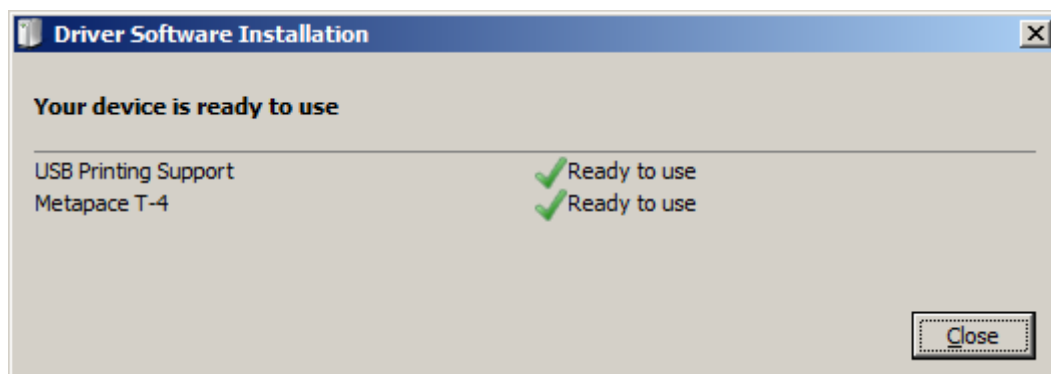
- 4) When the following message box appears, click the “Install this driver software anyway” button.



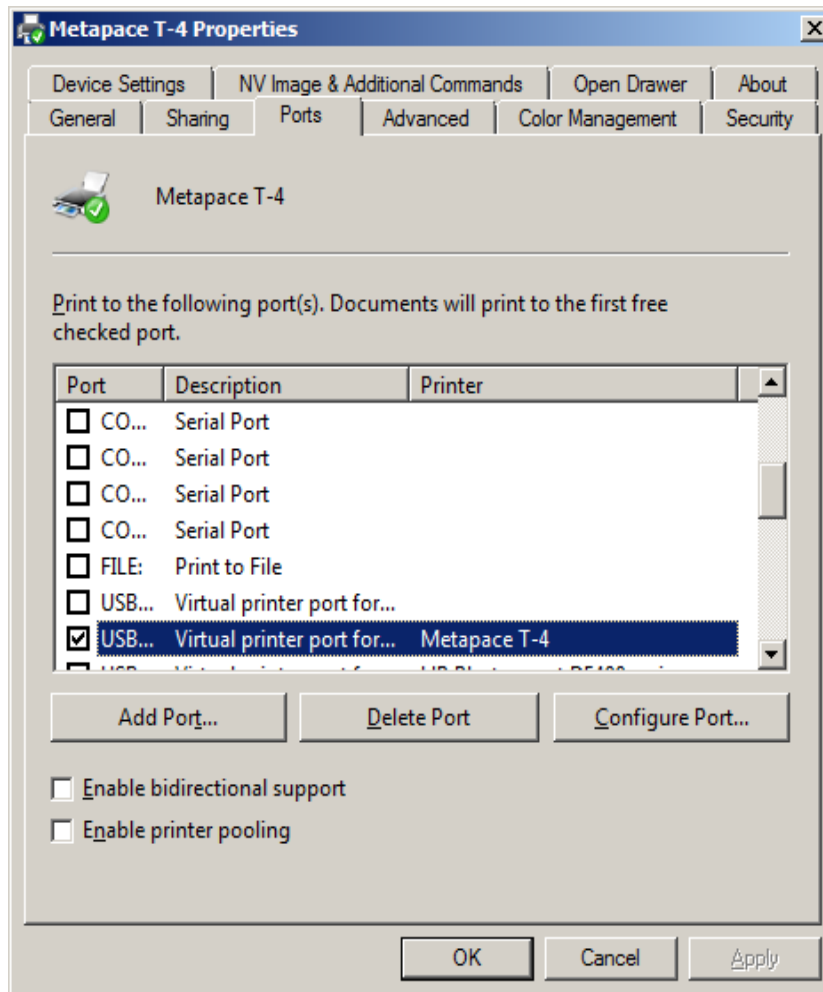
- 5) Click the "OK" button.



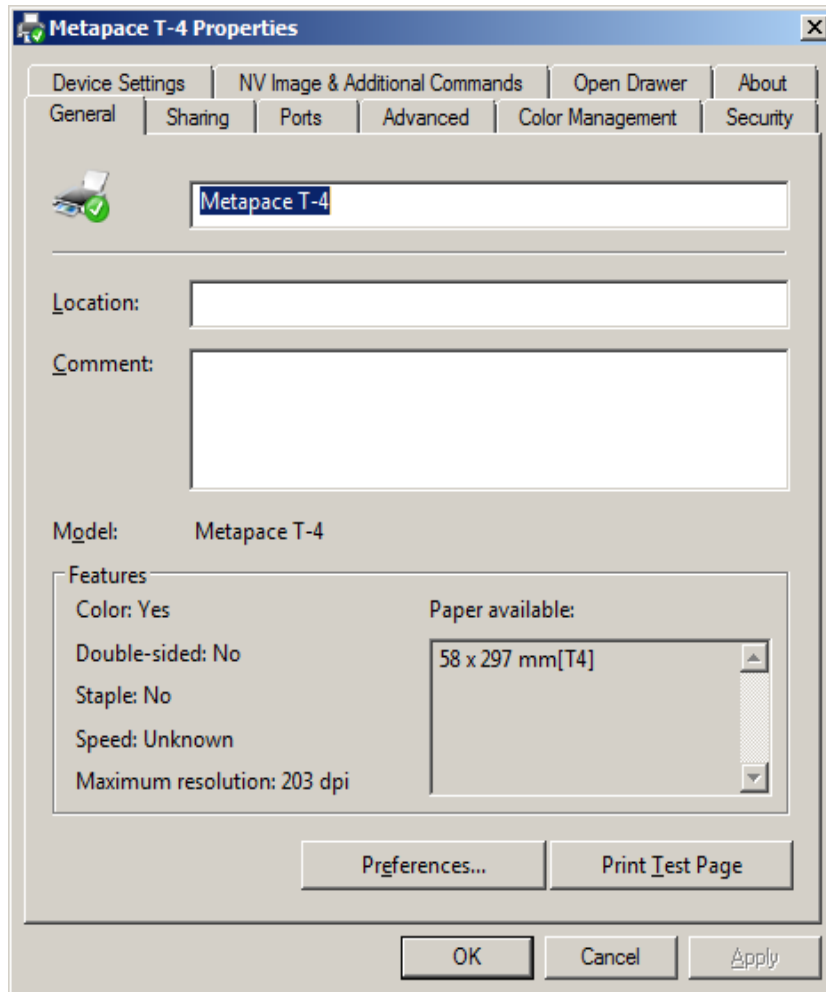
- 6) Turn on the printer.



7) The USB Port setting can be confirmed in the Windows Driver properties.



8) Click the “Print Test Page” button and check printing status.



9) Proper installation of the driver is indicated if the test page is printed normally.

5. Detailed Windows Driver Settings

*** Note: Please turn off UAC (User Account Control) prior to setting up configurations or properties in Windows driver on Windows Vista, Windows Server 2008 and Windows 7.**

The following functions can be set in detail after the Windows Driver installation is complete.

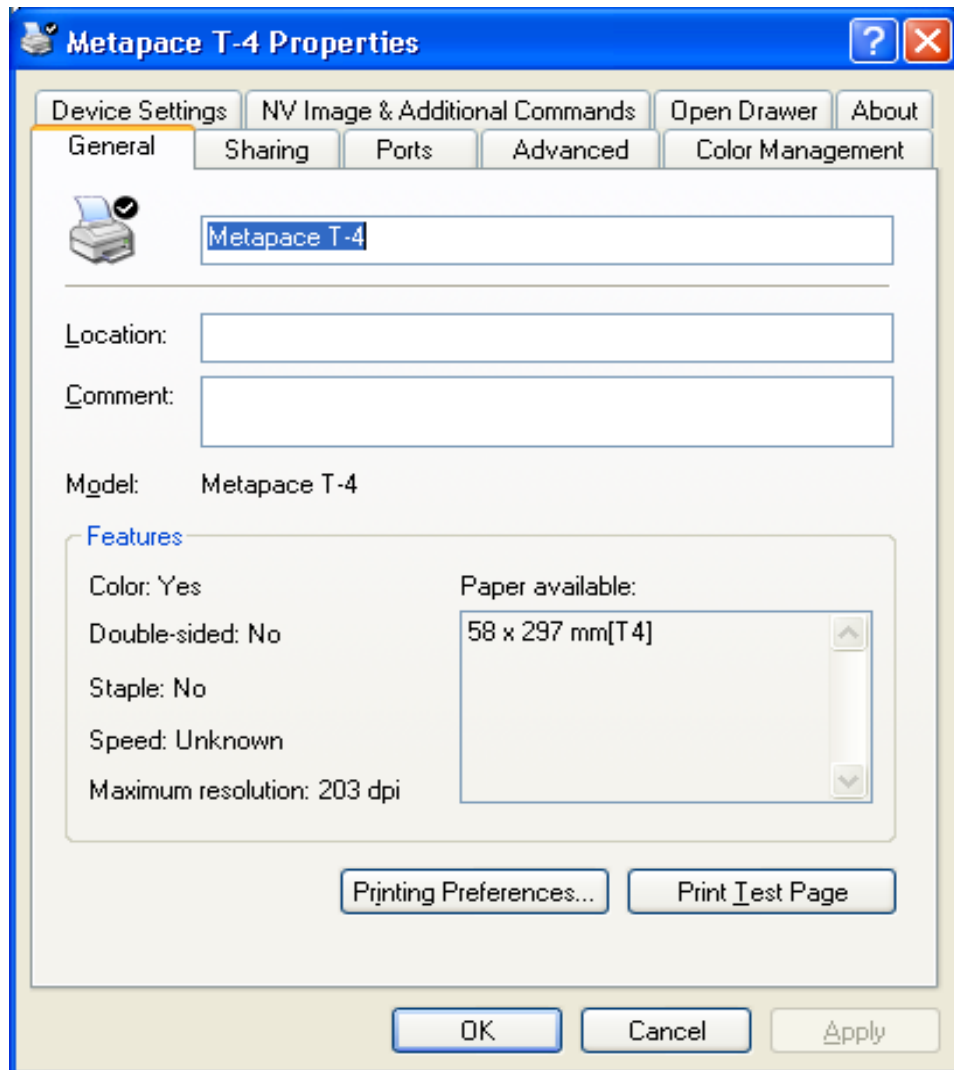
5-1 Paper Supply Method

The printer structure is such that the print head, which carries out printing, and the cutter, which cuts the printing paper, are separated. After printing, the location of the end section can be adjusted as follows.

- Automatically Select: Select the "Receipt[Partial cut]" automatically.
- Receipt[Partial cut]: After printed text is transferred up to the cutter (auto cutter), a paper is cut by auto cutter.
- Receipt[No cut]: Printed text is transferred up to the cutter (manual cutter).
- Receipt[Partial cut without paper feeding]: A paper is cut by auto cutter without paper feeding.
- Receipt [No feed]: Printed text is transferred up to the next line only.
(minimum transfer: 0x0A).
- Form[No Cut]: For long print jobs, printed text is transferred according to the Receipt option per selected paper size.
- Form[Partial Cut]: For long print jobs, printed text is transferred and cut according to the Receipt option per selected paper size.

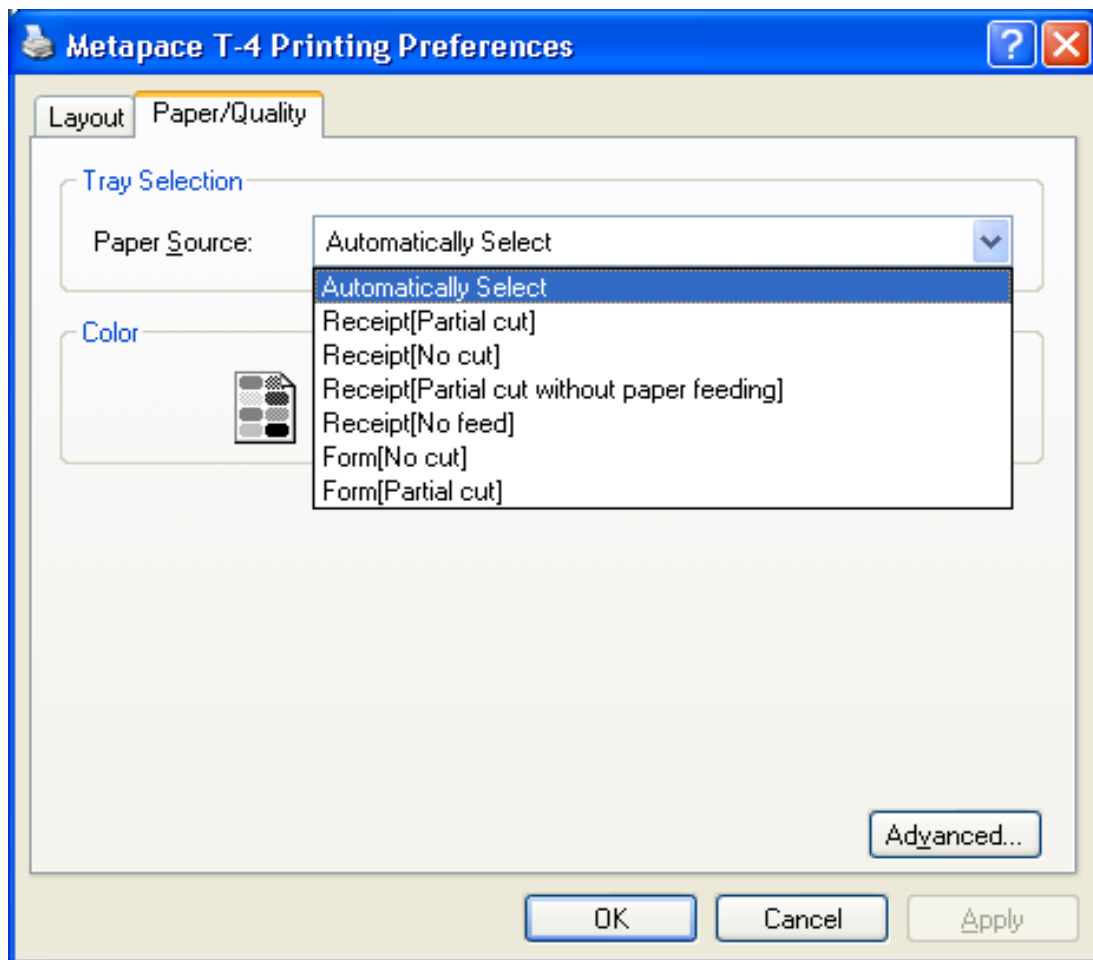
Detailed setting can be done as follows.

1) Open the printer properties window in the Windows OS.



2) Click the "Printing Preferences" button in the "General" tab.

- 3) Select the desired setting in the "Paper/Quality" tab.
(Resolution is fixed at 203 × 203)



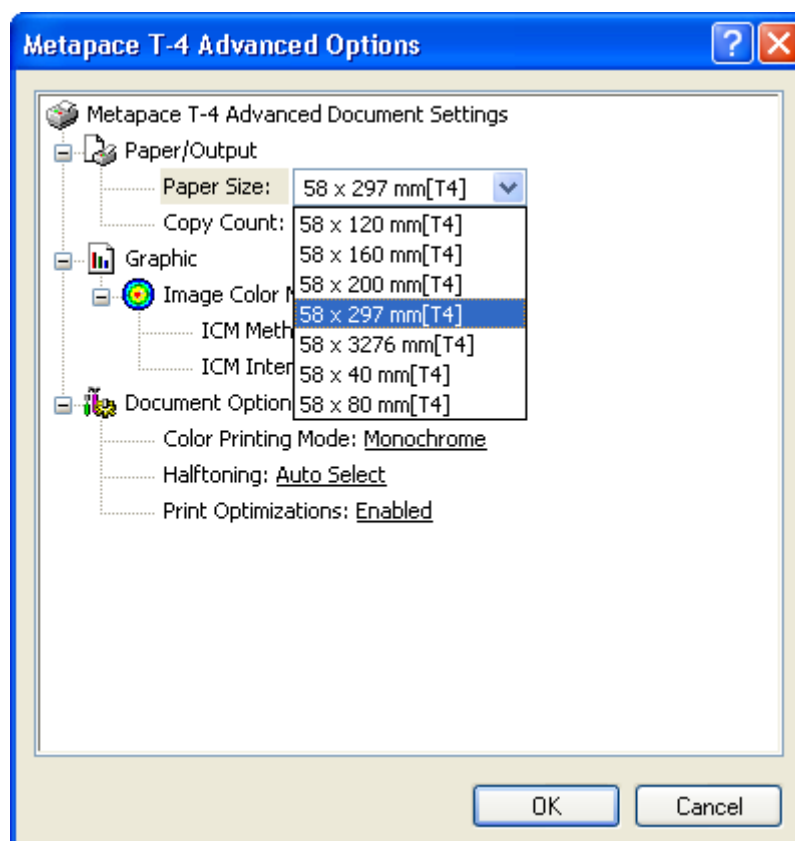
5-2 Paper Size

The paper sizes available in the Windows Driver are as follows.

- 58 × 297 mm [T4]
- 58 × 3276 mm [T4]
- 58 × 40 mm [T4]
- 58 × 80 mm [T4]
- 58 × 120 mm [T4]
- 58 × 160 mm [T4]
- 58 × 200 mm [T4]

Detailed setting can be done as follows.

- 1) Open the printer properties window in the Windows OS.
- 2) Click the "Printing Preferences" button in the "General" tab.
- 3) Select the "Paper/Quality" tab, and click the "Advanced" button.
Select the desired setting.



5-3 NV Image & Additional Commands

The Windows Driver serves to receive the content for print from an application and send it to the printer. The NV Image function allows for the addition of NV image and desired commands at the beginning or end of the print content sent to the printer.

To use the NV Image in Windows Vista, the following OS options must be set.
“Control Panel → User Accounts → Uncheck the “Use User Account Control (UAC) to help protect your computer” checkbox under “Turn User Account Control On or Off”.

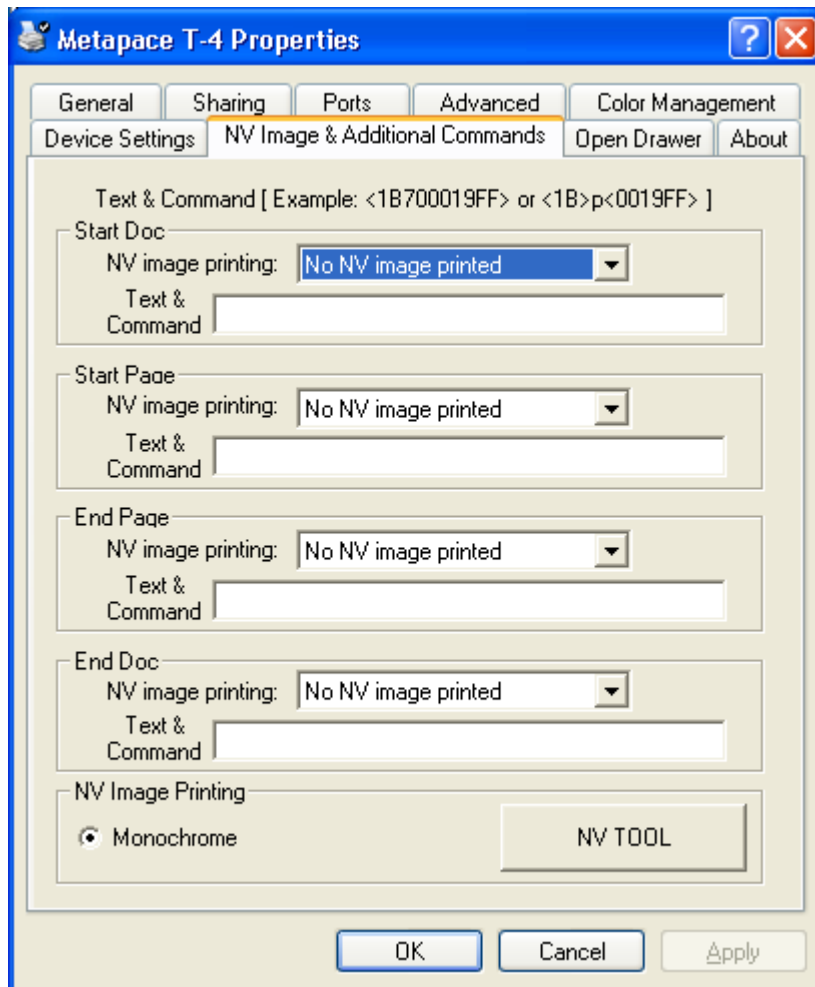
The command functions available are as follows.

- StartDoc - NV Image Printing: addition of NV Image at the beginning of the print job
- Text & Command: addition of command at the beginning of the print job
- StartPage - NV Image Printing: addition of NV Image at the beginning of the print page
- Text & Command: addition of command at the beginning of the print page
- EndPage - NV Image Printing: addition of NV Image at the beginning of the end page
- Text & Command: addition of command at the beginning of the end page
- EndDoc - NV Image Printing: addition of NV Image at the beginning of the end job
- Text & Command: addition of command at the beginning of the end job
- NV Tool Button - Execution of NV Image Tool for download images to the printer.

Detailed setting can be done as follows.

- 1) Open the printer properties window in the Windows OS.

2) Click the " NV Image & Additional Commands" tab.

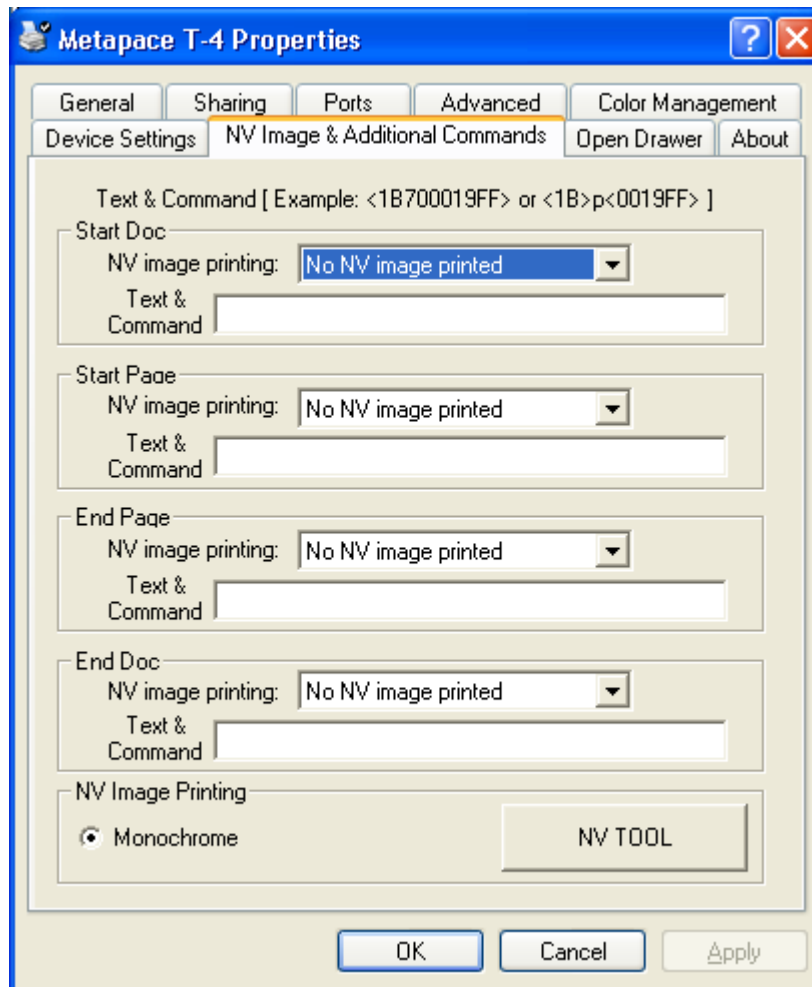


- 3) If the user wishes to add NV Image prior to printing, Select NV Image in the "NV Image Printing" in StartDoc and click the "Apply" button.
- 4) If the user wishes to open Cash Drawer 1 prior to printing, enter "<1B700019FF>" in the "StartDoc" space and click the "Apply" button.
- 5) If the user wishes to open Cash Drawer 1 at the end of printing, enter "<1B700019FF>" in the "EndDoc" space and click the "Apply" button.
- 6) If the user wishes to download NV image to printer, click "NV Tool" button and download the image using NV tool (Detailed information is informed in NV Tool manual)

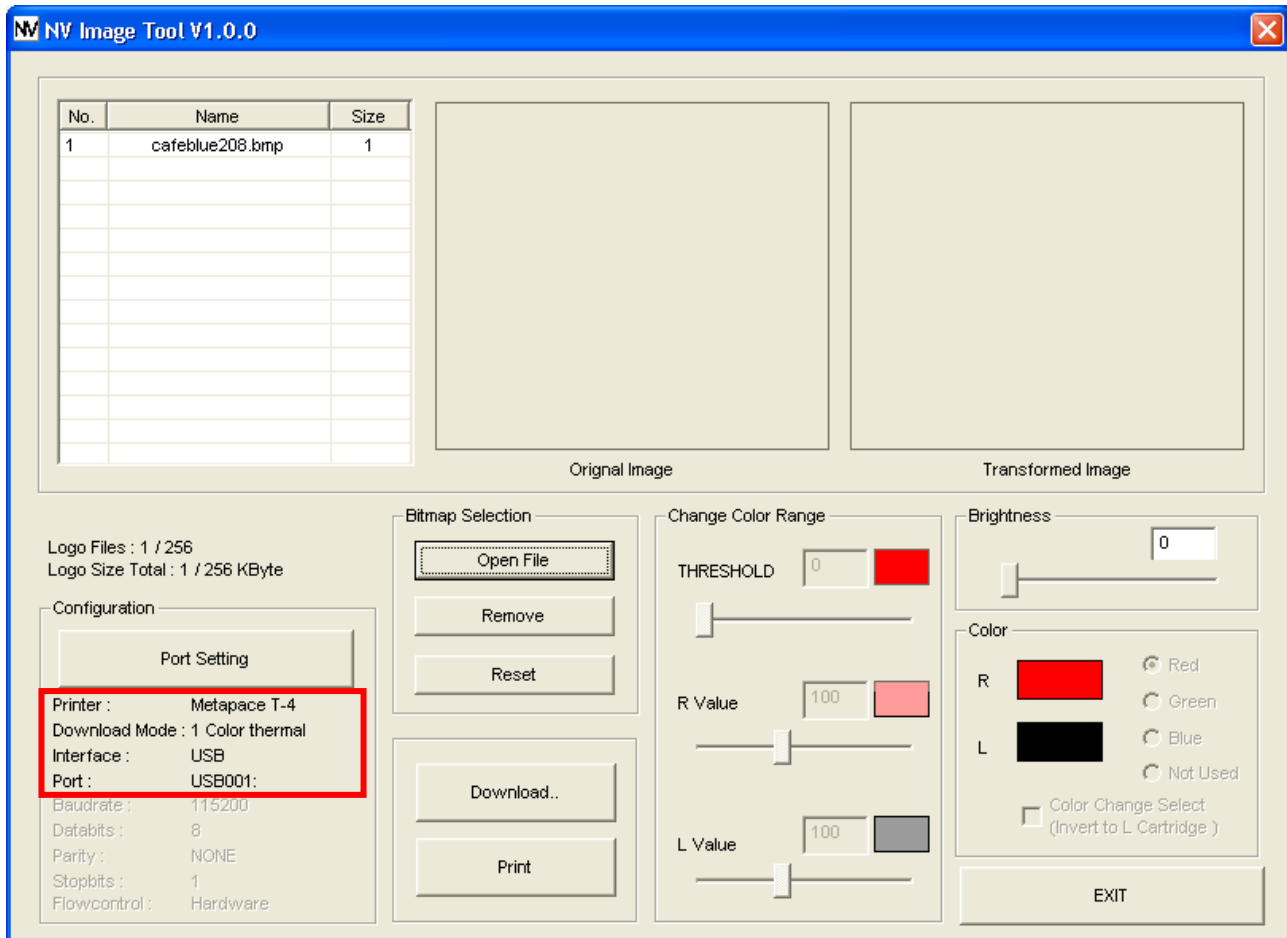
For more information on the hexadecimals that can be entered in "Text & Command" box, refer to the Control Commands Manual.

5-4 NV Image Download

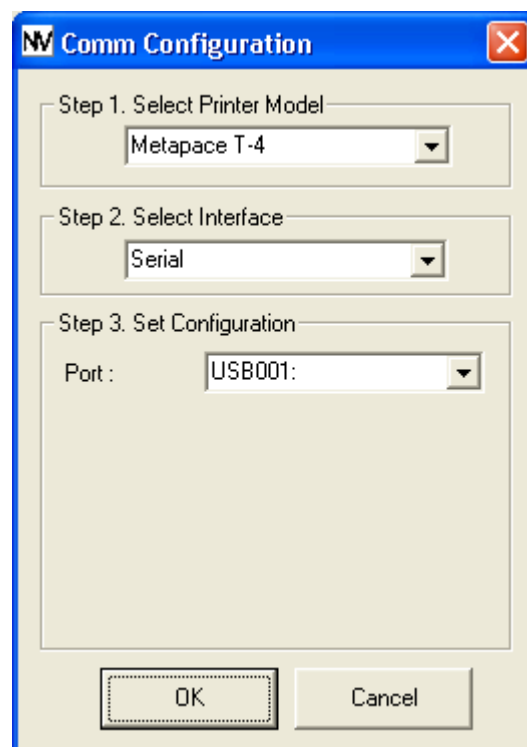
1) Click “NV Tool” Button in NV Image Tab.



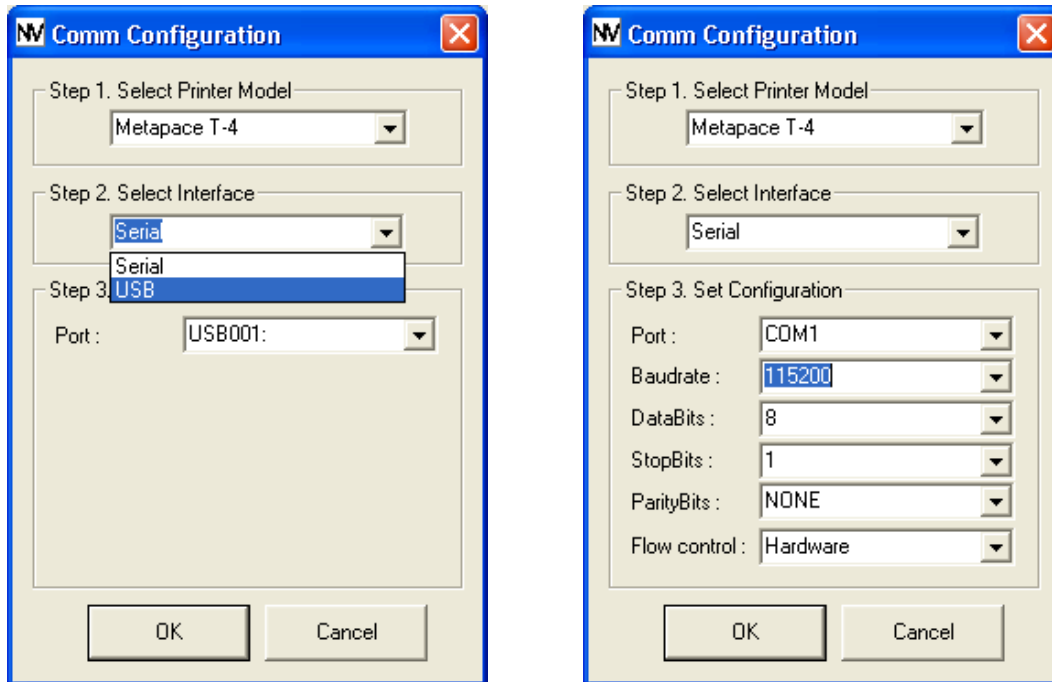
2) Upon initiation of the program, the following main window will be appeared.



3) Click "Port Setting" button to set communication configuration.

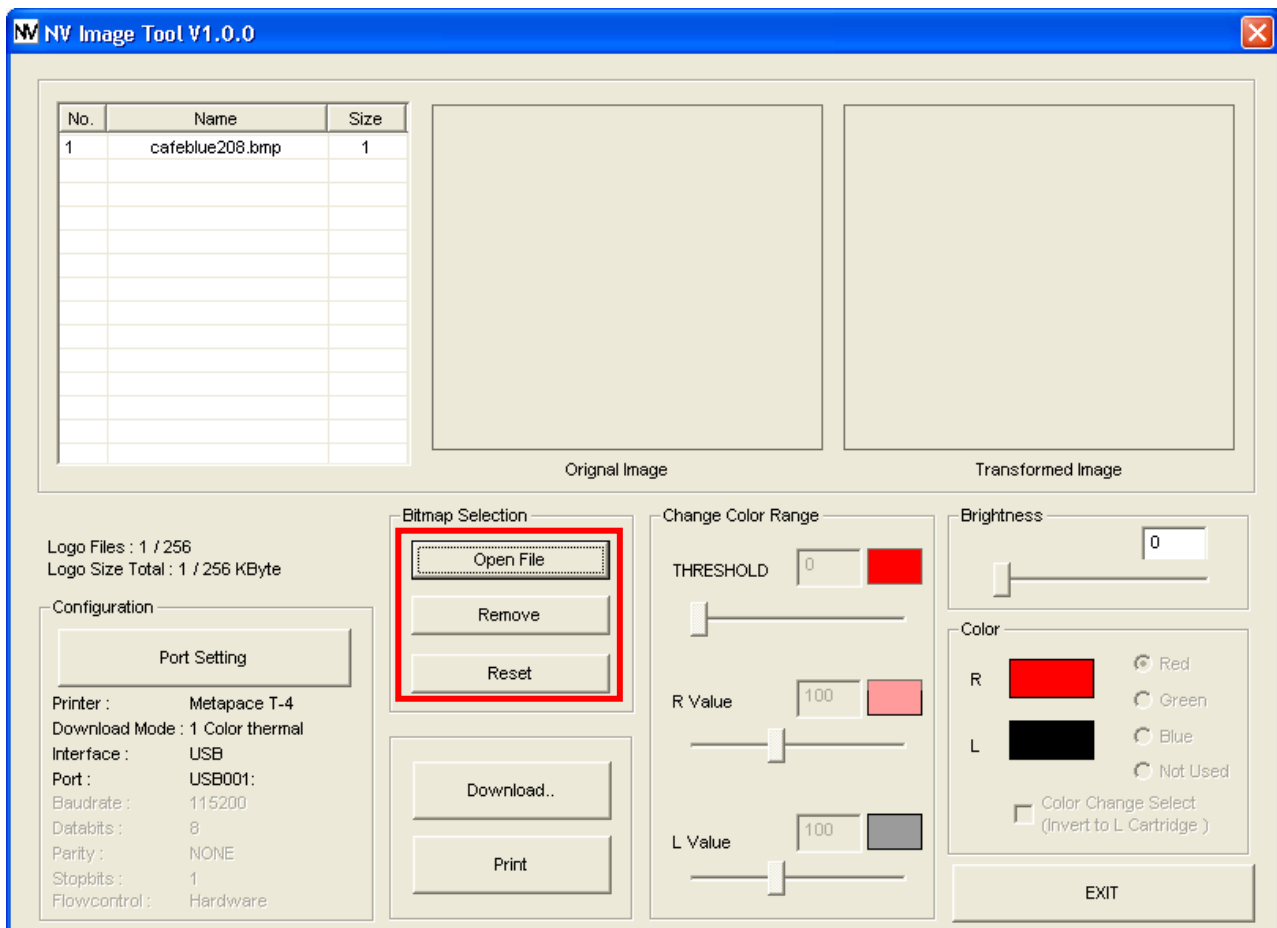


- 4) Set the port and the communication configuration that corresponds to the printer.

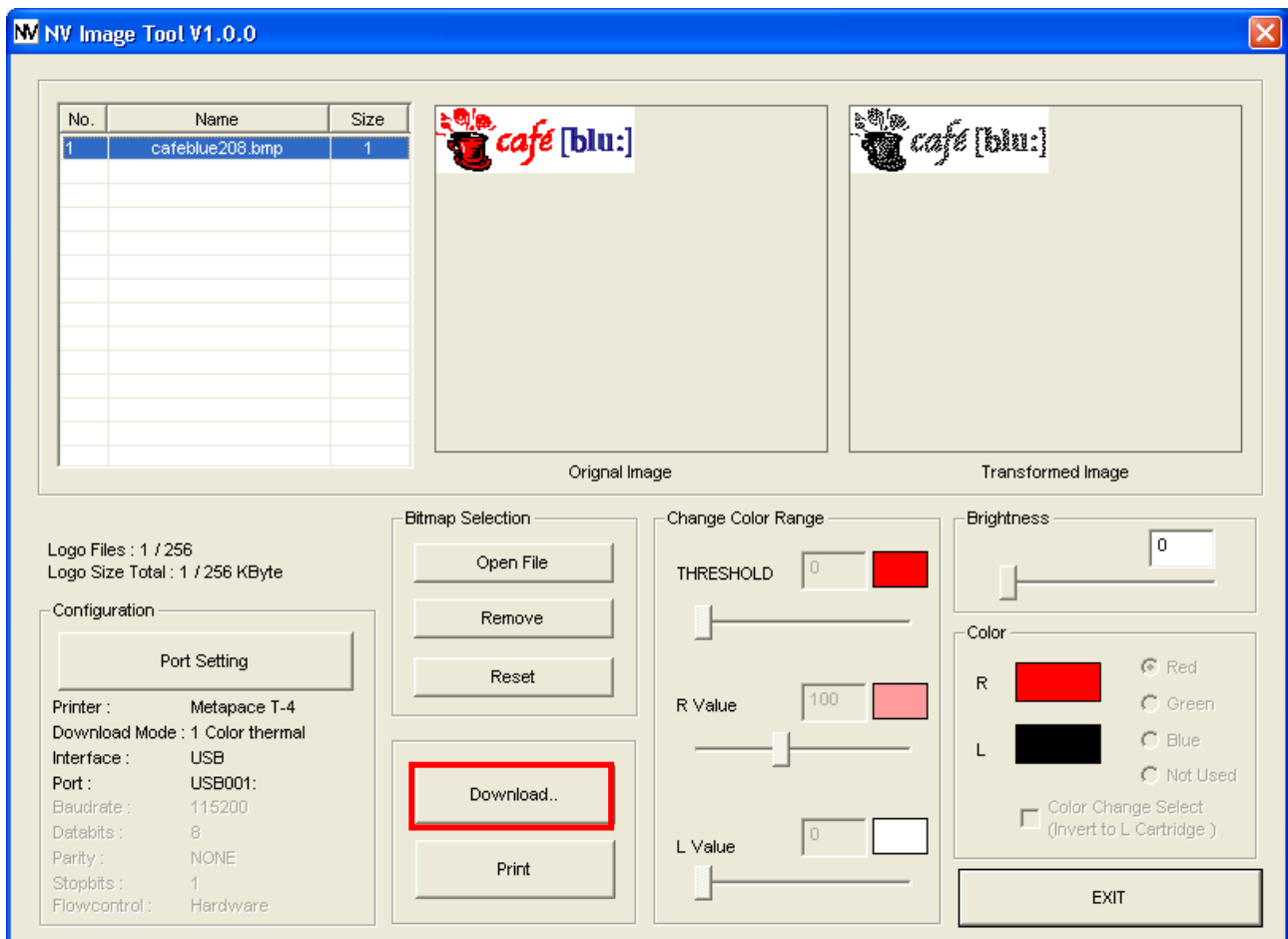


- 5) After selecting the configuration press “OK” button to complete the communication configuration setting, and press “Cancel” button to cancel the configuration selected.

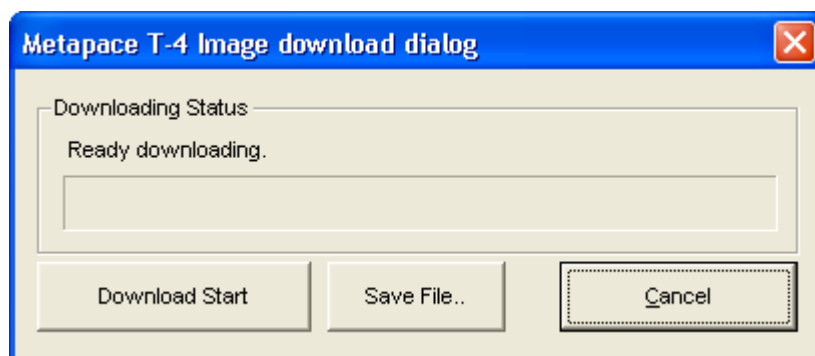
- 6) The images can be opened / added, deleted in the Image list box using three buttons in Bitmap selection. Only bmp type of image is available to download.



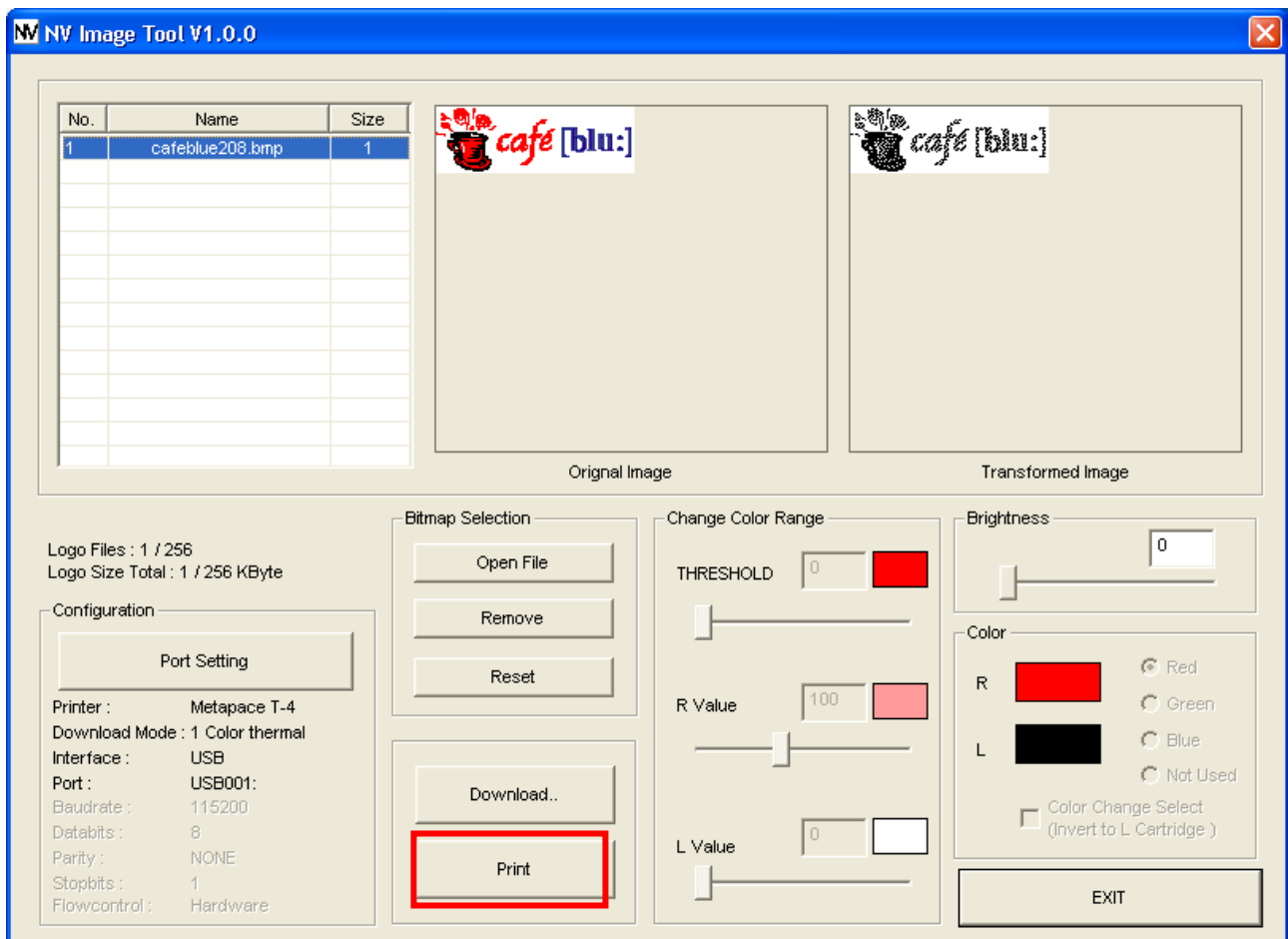
- 7) When the “Download..” button is clicked, pop-up window and the steps are different based on printer model.



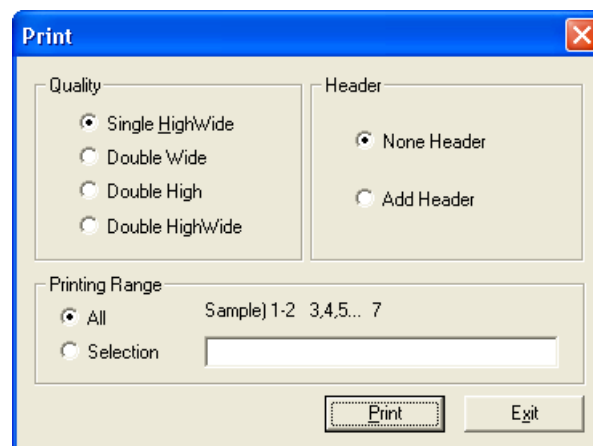
- 8) Download the mono image in thermal printer. After all images stored on the corresponding printer are deleted, the image is downloaded. The image is assigned a number according to the image list displayed on the screen.



- 9) The “Print” button in the main screen can be used on each printer model to print and test a stored image.



- 10) Print the mono image in thermal printer. Configuration of expansion options and the selection of the number of the image to be printed can be done when printing.



5-5 Open Drawer

The Windows Driver supports “Open Drawer” and “Buzzer” functions.

The Open Drawer function allows for open drawer commands at the beginning or end of the print content sent to the printer.

The Buzzer functions allows for internal beep commands at the beginning or end of the print content sent to the printer.

To use the functions in Windows Vista, the following OS options must be set.

“Control Panel → User Accounts → Uncheck the “Use User Account Control (UAC) to help protect your computer” checkbox under “Turn User Account Control On or Off”.

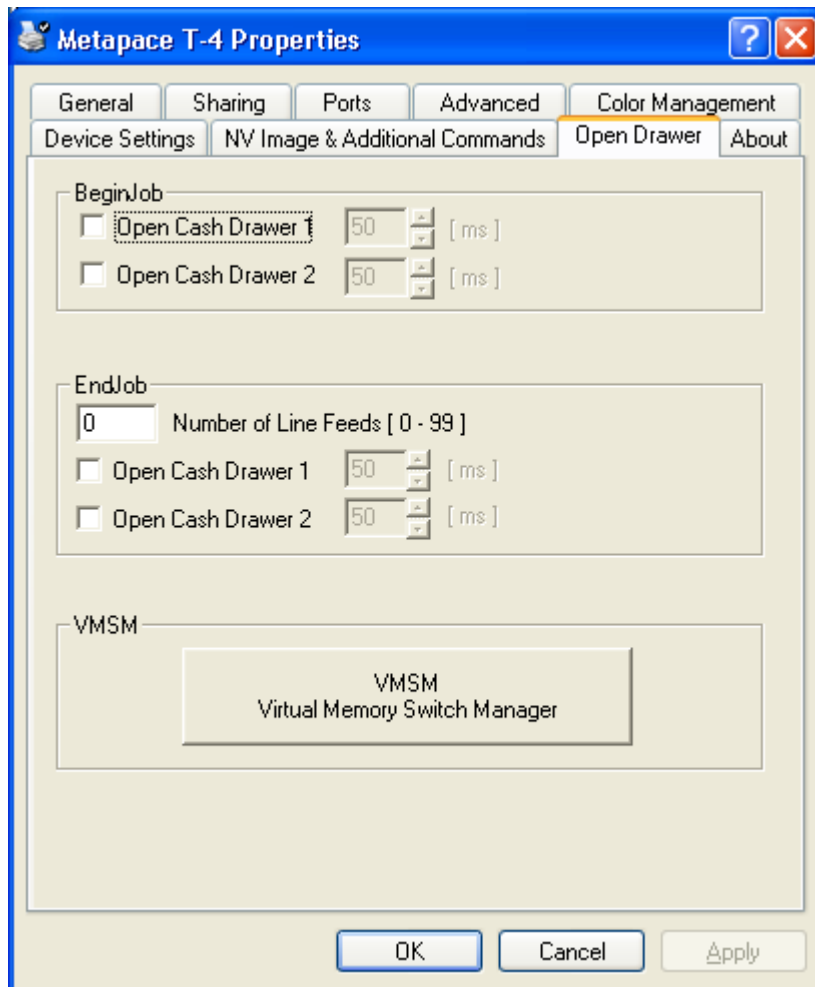
The command functions available are as follows.

- BeginJob - Open Cash Drawer1 / External Beep 1
: Addition of Open Drawer1 or External Buzzer1 at the beginning of the print job
- Open Cash Drawer2 / External Beep 2
: Addition of Open Drawer2 or External Buzzer2 at the beginning of the print job
- EndJob - Open Cash Drawer1 / External Beep 1
: Addition of Open Drawer1 or External Buzzer1 at the End of the print job
- Open Cash Drawer2 / External Beep 2
: Addition of Open Drawer2 or External Buzzer2 at the End of the print job

Detailed setting can be done as follows.

1) Open the printer properties window in the Windows OS.

2) Click the "Opened Drawer" tab.



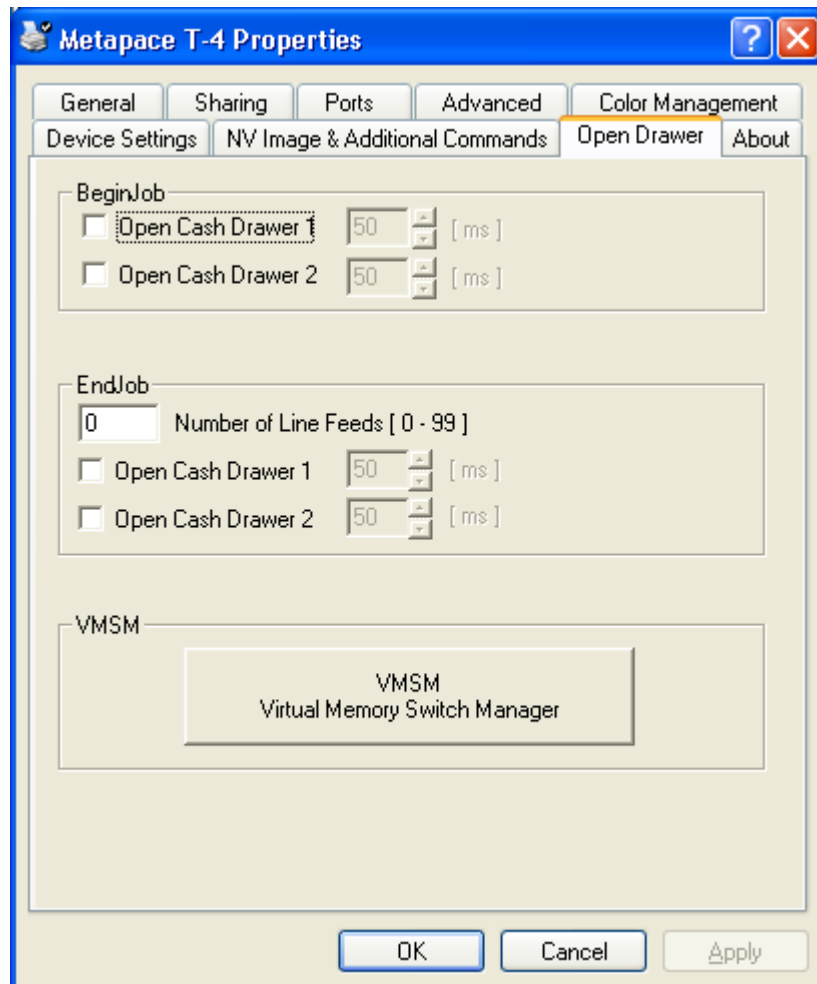
- 3) If the user wishes to open Cash Drawer 1 prior to printing, check box of "Open Cash Drawer1" in the "BeginJob" and click the "Apply" button.
- 4) If the user wishes to open Cash Drawer 2 at the end of printing, check box of "Open Cash Drawer2" in the "EndJob" and click the "Apply" button.
- 5) If the user wishes to use Internal Beep at the end of printing, check box of "Internal Beep" in the "EndJob" and click the "Apply" button.

5-6 VMSM

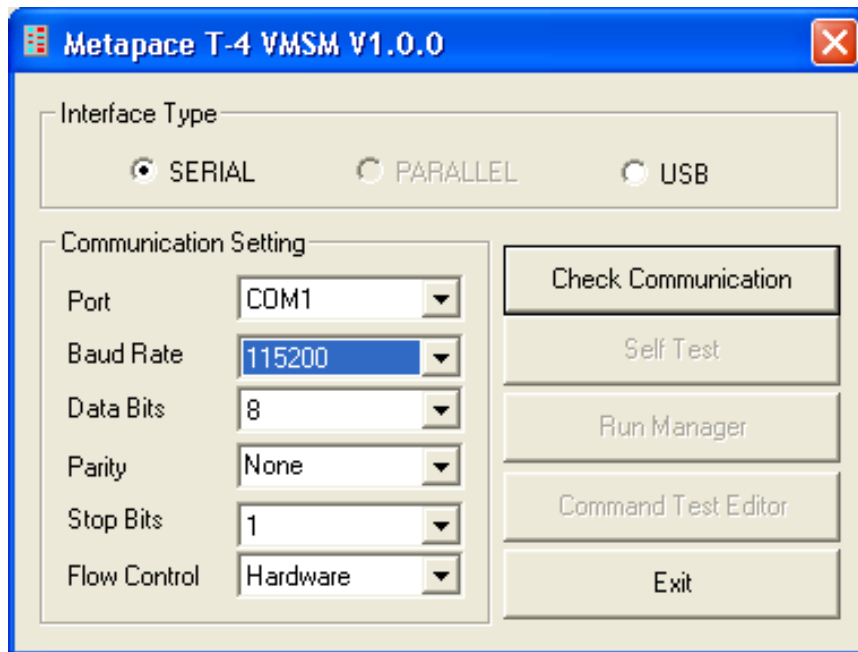
5-6-1 Printer Communication Setting

To use the VMSM (Virtual Memory Switch Manager), It is necessary to set the status of communication between Printer and PC.

1) Click “VMSM” Button in Open Drawer Tab.



2) Upon initiation of the program, the following pop-up window will appear.

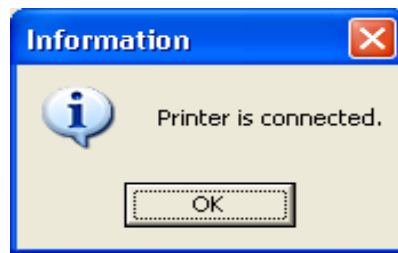


3) Select the Interface Type.

- SERIAL
- USB

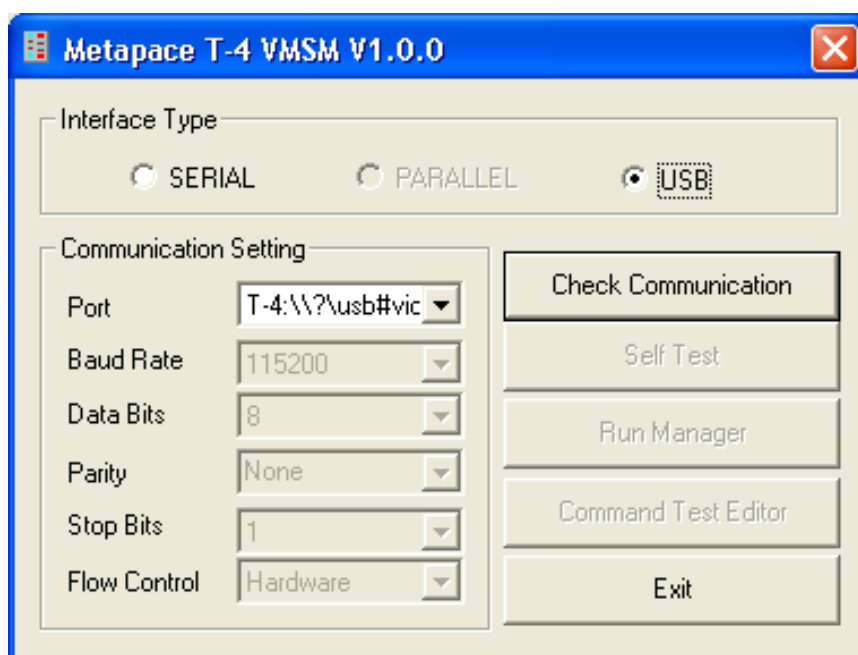
In the Serial Interface, match the communication setting (COM Port Number and Baud Rate) to those of the Printer.

- 4) Click the “Check Communication” button, and Check the Current Communication Status.
If there is no problem between PC and Printer, the following message will appear.



* If the message doesn't appear, restart the program.

- 5) If communication is okay, the Self Test button, Run Manager button and Command Test Editor button become available for selection.



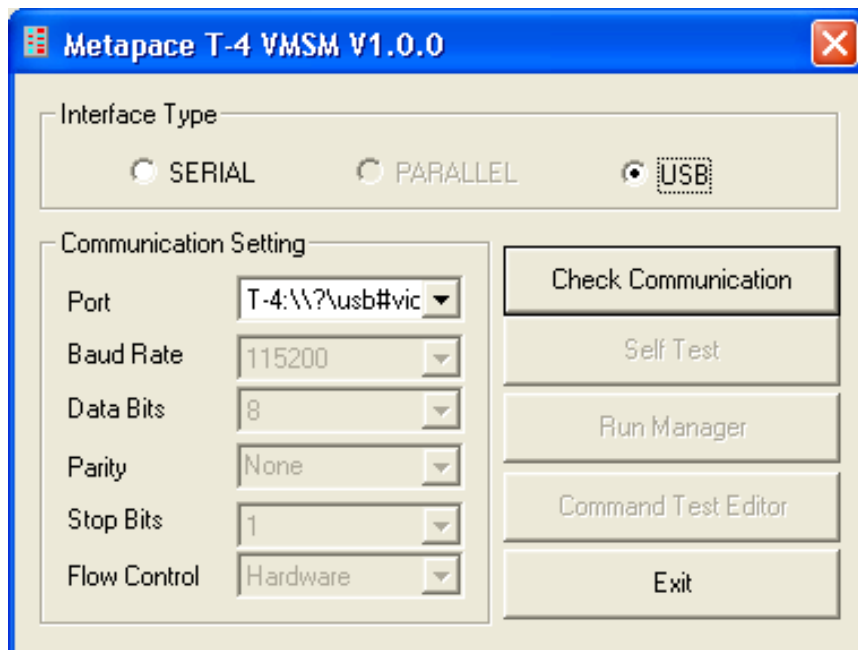
[Self Test]: Pressing this button prints the self-test page of the printer.

[Run Manager]: Pressing this button opens a window for memory switch settings of the printer.

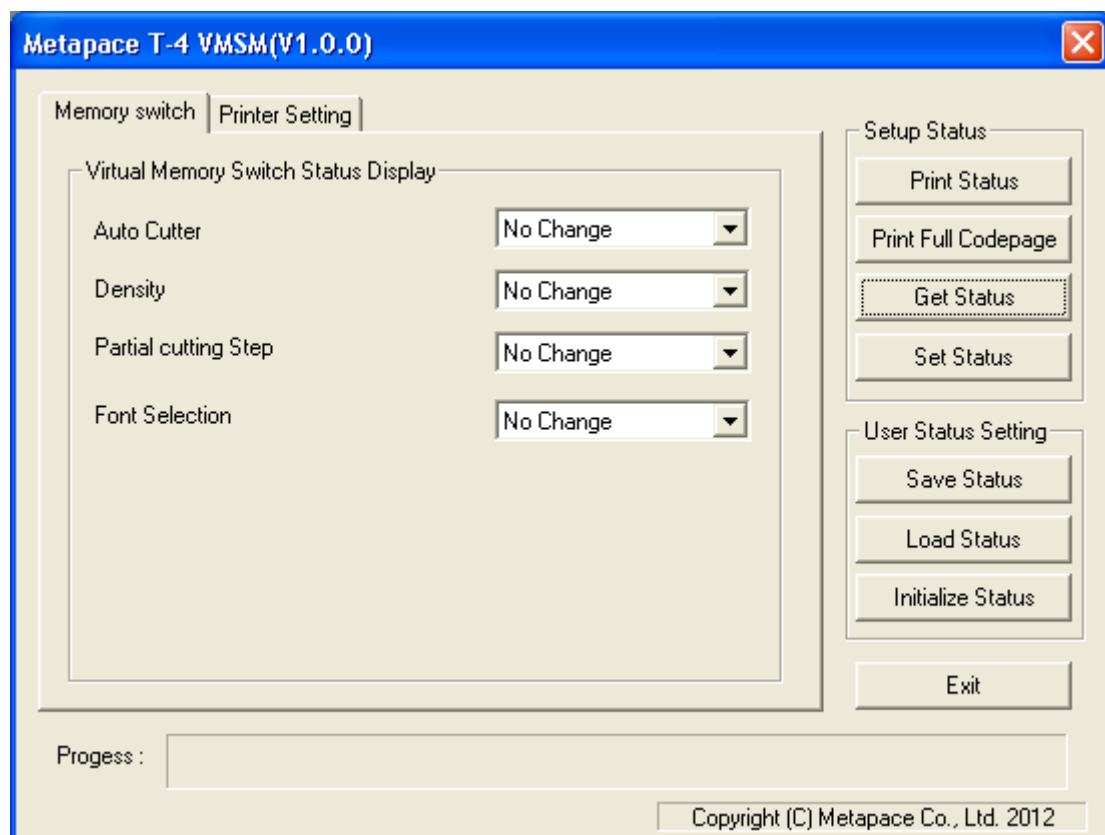
[Command Test Editor]: Pressing this button opens a window for command test of the printer.

5-6-2 Getting the Memory Switch Status of the Printer

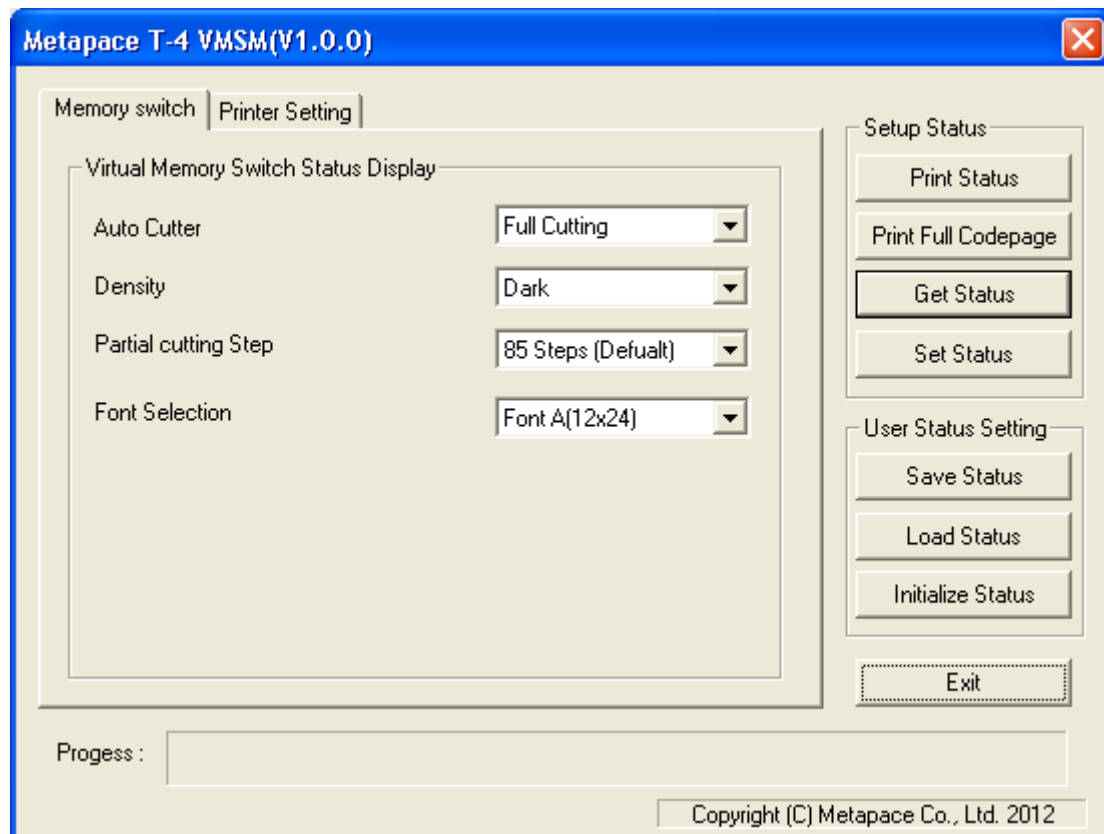
1) If the Communication Setting is OK, click the “Run Manager” button.



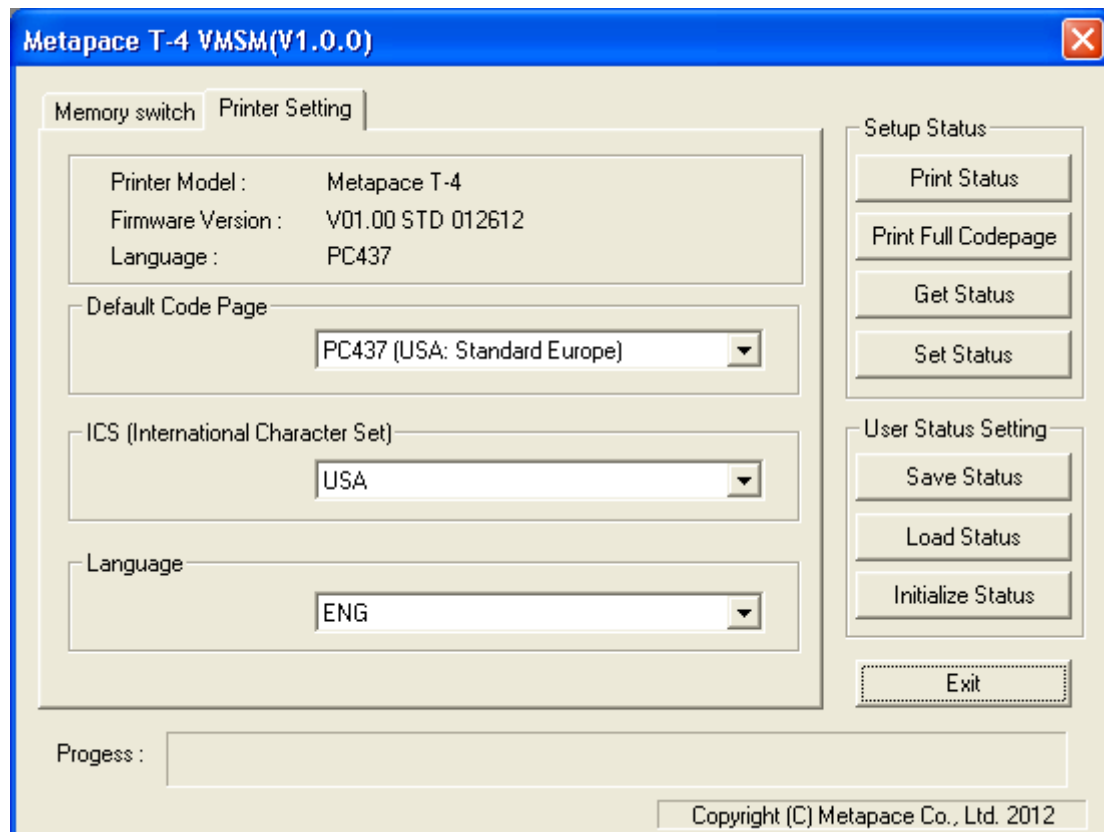
2) Click the “Get Status” button. It gets the status of the Printer Setting.



- 3) The “Memory switch” Tab in the Printer Status window displays the current virtual memory switch settings of the printer, and allows new settings to be defined.

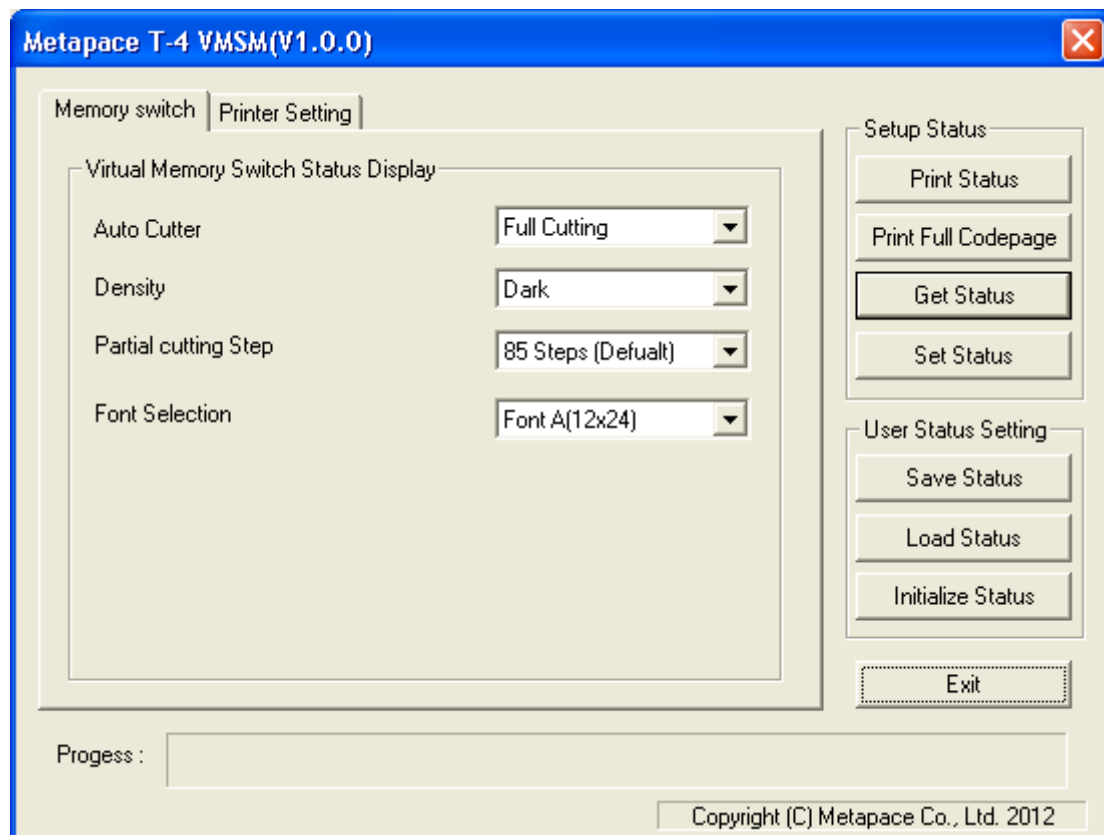


- 4) The “Printer Setting” Tab displays Language setting, printer information, and code page information, and allows new settings to be defined.



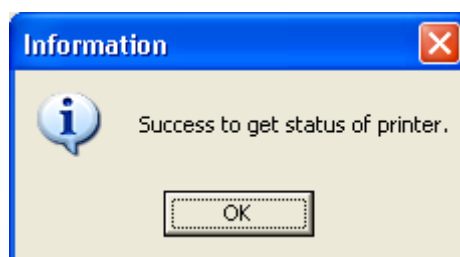
5-6-3 Setting the memory switch status of the Printer

After getting the memory switch status of the printer, the status of the printer can be modified.



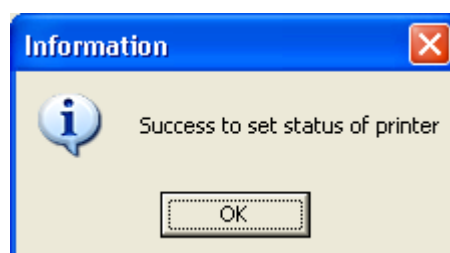
1) "Get Status"

Pressing this button displays the current memory switch settings read from the printer. The following message appears if the switch settings are acquired normally.



2) "Set Status"

Pressing this button allows the user to designate switch settings of the printer. The following message appears if the settings are appropriately defined.



3) "Save Status"

Pressing this button saves the current memory switch settings to file.

4) "Load Status"

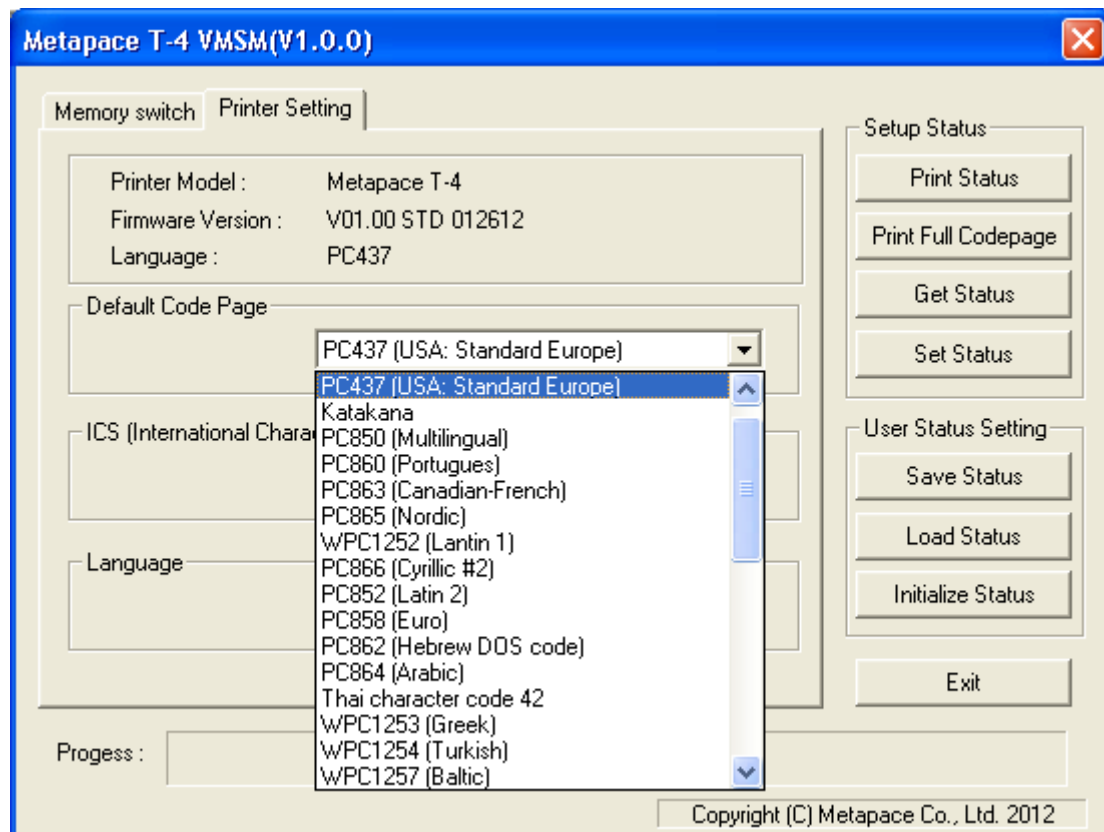
Pressing this button loads and displays the previously-saved memory switch settings file.

5) "Initialize Status"

Pressing this button resets the memory switch settings.

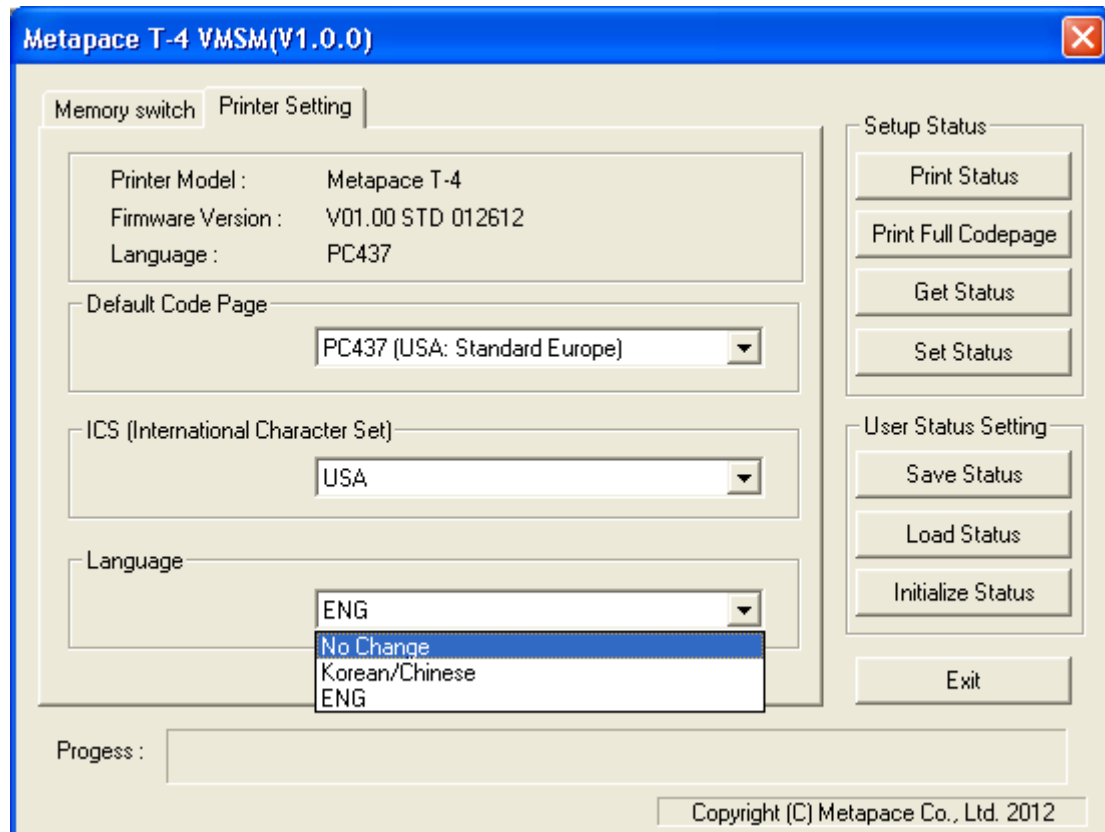
6) "Default Code Page Combo Box"

The user may select and set the default code page. However, for T-4 printers, this function is available only if the Nation Set Management Combo Box is set to STD.

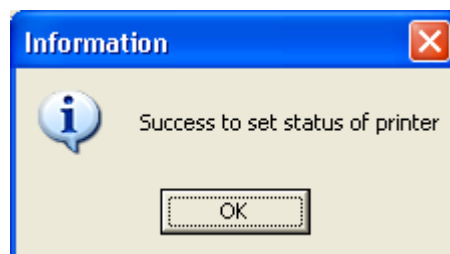


7) "Double byte Font selection Combo Box"

The Code page and font settings can be designated according to country and distributor.



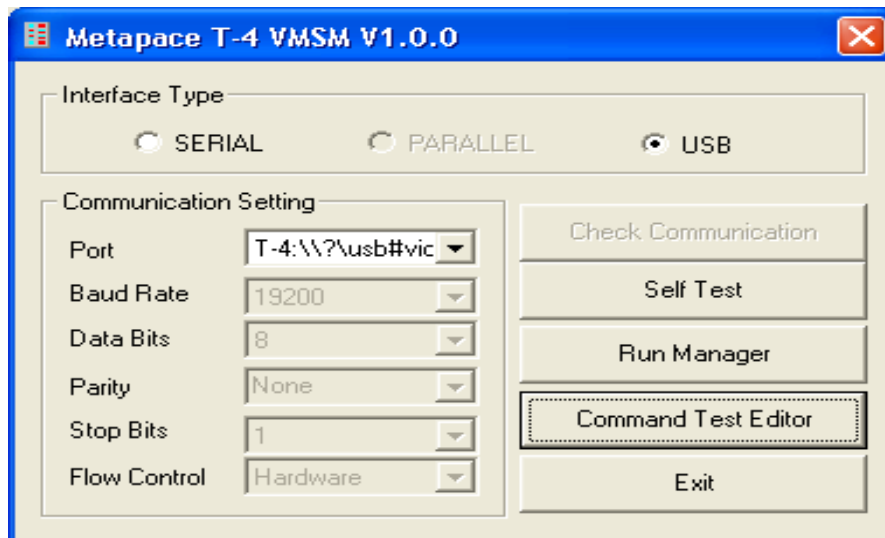
(1) If the "Set Status" button is pressed, the following message will appear.



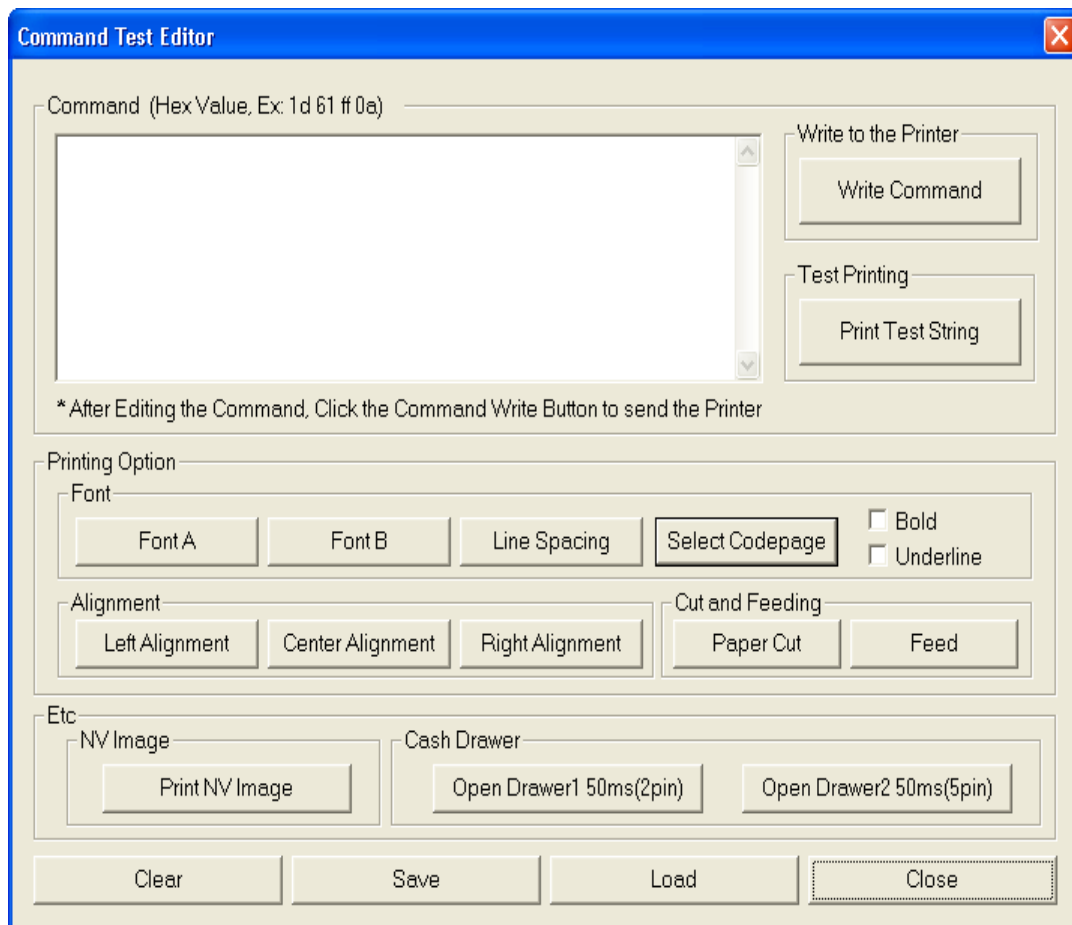
The default code page can be set by selecting the STD option in the combo box.
The default code page cannot be set if the Korean/Chinese(GB2312), option is selected.

5-6-4 Using the Command Test Editor

- 1) If the Communication Setting is OK, click the “Command Test Editor” button.



- 2) If the “Command Test Editor” button is pressed, the following dialog box will appear. Using this Dialog, the user can write and edit the command and send to the printer. Each button of “Printing Option” and “Etc” group can insert commands to edit box. Also “Write Command” button can transfer these commands to the printer. To verify the result of sending the command can use the “Print Test String” button.



6. Windows Driver Specifications

6-1 Fonts

The Windows Driver of the printer supports the fonts listed below.

Printing is done at faster speed when using the fonts below as opposed to the Windows fonts of the OS.

Printer Fonts			Character Size (dot)	Sizes (point)
FontA1x1	FontA1x1[Ext.]	FontA1x1[255]	FontA1x1(12x24)	8.5
FontA1x2	FontA1x2[Ext.]	FontA1x2[255]	FontA1x2(12x48)	17
FontA2x1	FontA2x1[Ext.]	FontA2x1[255]	FontA2x1(24x24)	8.5
FontA2x2	FontA2x2[Ext.]	FontA2x2[255]	FontA2x2(24x48)	17
FontA2x4	FontA2x4[Ext.]	FontA2x4[255]	FontA2x4(24x96)	34
FontA4x2	FontA4x2[Ext.]	FontA4x2[255]	FontA4x2(48x48)	17
FontA4x4	FontA4x4[Ext.]	FontA4x4[255]	FontA4x4(48x96)	34
FontA4x8	FontA4x8[Ext.]	FontA4x8[255]	FontA4x8(48x192)	68
FontA8x4	FontA8x4[Ext.]	FontA8x4[255]	FontA8x4(96x96)	34
FontA8x8	FontA8x8[Ext.]	FontA8x8[255]	FontA8x8(96x192)	68
FontC1x1	FontC1x1[Ext.]	FontC1x1[255]	FontC1x1(9x24)	8.5
FontC1x2	FontC1x2[Ext.]	FontC1x2[255]	FontC1x2(9x48)	17
FontC2x1	FontC2x1[Ext.]	FontC2x1[255]	FontC2x1(18x24)	8.5
FontC2x2	FontC2x2[Ext.]	FontC2x2[255]	FontC2x2(18x48)	17
FontC2x4	FontC2x4[Ext.]	FontC2x4[255]	FontC2x4(18x96)	34
FontC4x2	FontC4x2[Ext.]	FontC4x2[255]	FontC4x2(36x48)	17
FontC4x4	FontC4x4[Ext.]	FontC4x4[255]	FontC4x4(36x96)	34
FontC4x8	FontC4x8[Ext.]	FontC4x8[255]	FontC4x8(36x192)	68
FontC8x4	FontC8x4[Ext.]	FontC8x4[255]	FontC8x4(72x96)	34
FontC8x8	FontC8x8[Ext.]	FontC8x8[255]	FontC8x8(72x192)	68

Printer Fonts are defined as follows.

1) FontA1x2

- ANSI Character code support (Code Page 16: 1252)
- Character size (dot): 12 x 48 (double height) / Sizes (point): 17

2) FontA1x2[Ext]

- IBM expansion Character code support (Code Page 0: 437)
- Character size (dot): 12 x 48 (double height)
- Sizes (point): 17

3) FontA1x2[255]

- Buyer exclusive code support (Code Page 255)
- Character size (dot): 12 x 48 (double height)
- Sizes (point): 17

6-2 Special Functions

The Windows Driver supports the special functions indicated below.
 These special functions are available when using the characters after the “FontControl” font is selected.

This function is not an ordinary character printing function. Take special care.

Character	Special Function
5	Prints HT (0 x 09)
6	Prints LF (0 x 0A)
7	Prints CR (0 x 0D)
a	Open Drawer 2 (50ms drive pulse width)
b	Open Drawer 2 (100ms drive pulse width)
c	Open Drawer 2 (150ms drive pulse width)
d	Open Drawer 2 (200ms drive pulse width)
e	Open Drawer 2 (250ms drive pulse width)
g	Cut Receipt (partial cut) without paper feeding
p	Does not add HRI characters to the barcode
q	Adds HRI characters in FontA above the barcode
r	Adds HRI characters in FontA below the barcode
s	Adds HRI characters in FontC above the barcode
t	Adds HRI characters in FontC below the barcode
w	Aligns text to the left
x	Aligns text to the center
y	Aligns text to the right
A	Open Drawer 1 (50ms drive pulse width)
B	Open Drawer 1 (100ms drive pulse width)
C	Open Drawer 1 (150ms drive pulse width)
D	Open Drawer 1 (200ms drive pulse width)
E	Open Drawer 1 (250ms drive pulse width)
G	Prints 1 st NV bit image
H	Prints 2 nd NV bit image
I	Prints 3 rd NV bit image
J	Prints 4 th NV bit image
K	Prints 5 th NV bit image
P	Cut Receipt (partial cut)
[Prints 1 st NV bit image in double-sized mode.
]	Prints 2 nd NV bit image in double-sized mode.
^	Prints 3 rd NV bit image in double-sized mode.
_	Prints 4 th NV bit image in double-sized mode.
`	Prints 5 th NV bit image in double-sized mode.

1) Sample Use

If the “FontControl” font is selected and 6 is entered, the “LF” (Line Feeding) operation is activated.

(does not entail the printing of the character “6”)

2) “FontControl” Font Function

Printer Font for Special Function	Function	Size (point/dot)
FontControl	Open Drawer 1/2 Cut receipt Cut receipt(without paper feeding) Justification (Left/Center/Right) Output HT, Output LF, Output CR Barcode Printing Print NV Graphic Data	(8.5 / 12x24)

6-3 Barcodes

The Windows Driver supports the barcodes indicated below.
This function is available when entering barcode data after selecting “Printer Font Name”.
In addition, the “FontControl” font can be used to add HRI characters.

Printer Font Name	Size	Supported Characters
Codabar	18/35.5/53/71	Numeric: 0~9 Symbols: \$, +, -, ., /, : Letters: A~D
Code39	18/35.5/53/71	Numeric: 0~9 Symbols: \$, +, -, ., / Letters: A~Z
JAN13(EAN)	18/35.5/53/71	Numeric: 0~9
JAN8(EAN)	18/35.5/53/71	Numeric: 0~9
ITF	18/35.5/53/71	Numeric: 0~9
UPC-A	18/35.5/53/71	Numeric: 0~9
UPC-E	18/35.5/53/71	Numeric: 0~9
Code93	18/35.5/53/71	ASCII CODE: 0~127
Code128	18/35.5/53/71	ASCII CODE: 0~127

1) Sample Use

Select “Code39” and Size “18”, and then enter “1234”.
The barcode corresponding to “1234” is printed.

2) When Using Code128

Select “Code128” and Size “18”, and then enter “{B1234”.
The barcode corresponding to “1234” is printed.

When using “Code128”, characters, such as “{A”, “{B”, “{C”, must be included before the input data.

7. Use of Windows Driver

7-1 Use of Visual Basic

This section explains the use of the Windows Driver with Visual Basic to control the printer (T-4).

Sample programs are saved together if the Windows Driver is installed. Take note.

7-1-1 Windows Driver Selection

The following code is an example of the selection of the “Metapace T-4” Windows Driver.

```
For Each prnPrinter In Printers
    If prnPrinter.DeviceName = “Metapace T-4” Then
        Set Printer = prnPrinter
    Exit For
End If
Next
```

7-1-2 Test Printing

The following code is an example of the printing of Arial Test via the Windows font, and FontA1x1Test via the printer font.

```
'Print in Windows font
Printer.FontSize = 9
Printer.FontName = "Arial"
Printer.Print "Arial Test"

'Print in printer font
Printer.FontSize = 8.5
Printer.FontName = "FontA1x1"
Printer.Print "FontA1x1Test"

Printer.EndDoc
```

7-1-3 Barcode Printing

The following code is an example of the printing of the JAN8 (EAN) barcode.

```
'Print Bar Code.
Printer.FontSize = 18

Printer.FontName = "JAN8 (EAN)"
Printer.Print "1234567"

Printer.EndDoc
```

7-2 Use of WordPad

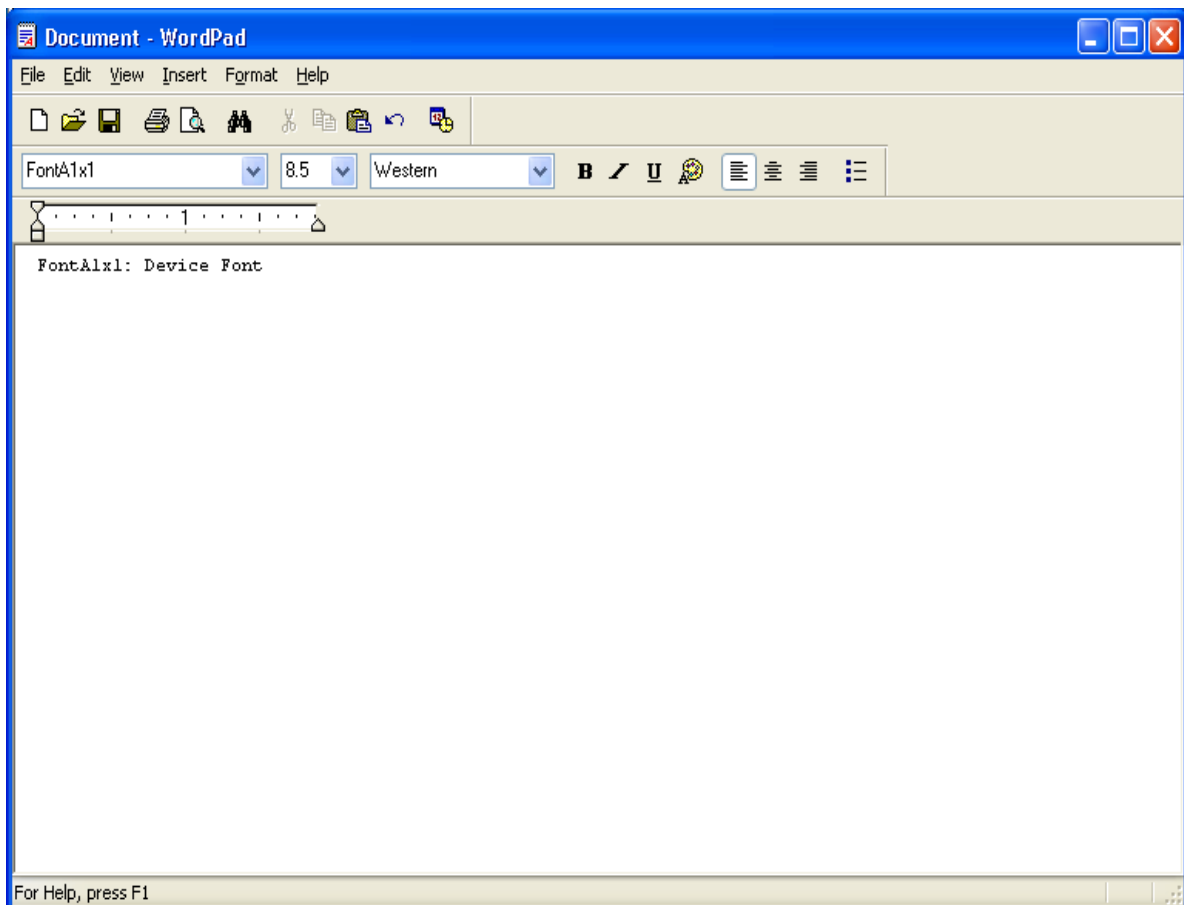
7-2-1 WordPad Environment Settings

After running WordPad and setting the following conditions, conduct a test.

- Select Printer
After selecting “Print” from the “File” menu, select the printer (Metapace T-4).
- Select Paper Size, Orientation, and Margins
After selecting “Page Setup” from the “File” menu, select the paper size, orientation, and margins.

7-2-2 Text Printing

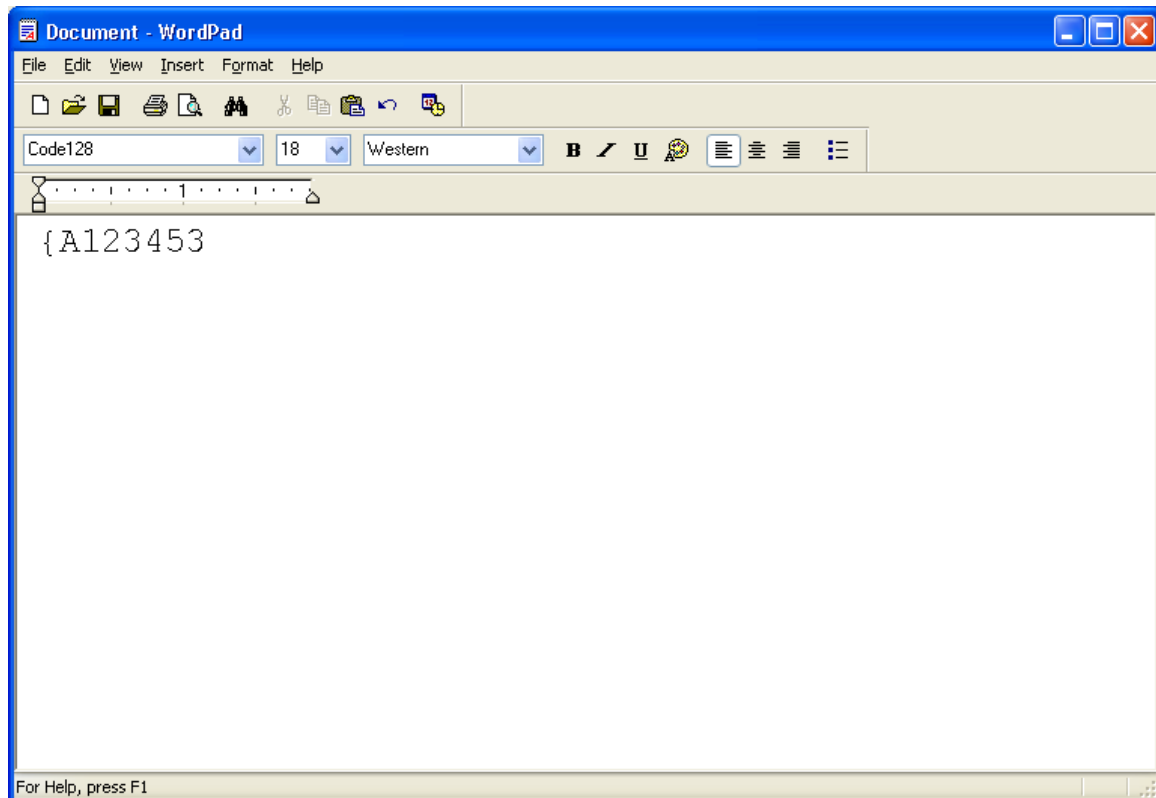
Use the Windows Driver of the printer to run a test.



- 1) Select the desired font from the Font menu (FontA 1x1).
- 2) Select the desired font size (8.5).
- 3) Enter the text to be printed in WordPad.
- 4) Click the Print button in the toolbar to print.

7-2-3 Barcode Printing

Use the Windows Driver of the printer to print the barcode.



- 1) Select the desired barcode from the Font menu (Code128).
- 2) Select the desired font size (18).
- 3) Enter "{A123453" in WordPad.
- 4) Click the Print button in the toolbar to print.