

Retail Scales

Mettler-Toledo (Albstadt) GmbH
 D-72458 Albstadt, Germany
 Phone +49 7431 14 0
 Fax +49 7431 14371

- Austria** **Mettler-Toledo GmbH**, A-1230 Vienna
Tel. (01) 604 19 80, Fax (01) 604 28 80
- Belgium** **Mettler-Toledo s.a.**, B-1932 Zaventem
Tel. (02) 334 02 11, Fax (02) 334 03 34
- China** **Mettler-Toledo (Shanghai) Ltd.**, Shanghai 200233
Tel. (21) 6485 04 35, Fax (21) 6485 33 51
- Croatia** **Mettler-Toledo, d.o.o.**, HR-10000 Zagreb
Tel. 01 29 58 130, Fax 01 29 58 140
- Czech Republic** **Mettler-Toledo, spol. s.r.o.**, CZ-100 00 Prague 10
Tel. 272 123 150, Fax 272 123 170
- France** **Mettler-Toledo s.a.**, F-78222 Virafly cedex
Tel. (01) 3097 147 17, Fax (01) 3097 16 16
- Germany** **Mettler-Toledo GmbH**, D-35353 Giessen
Tel. (0641) 50 74 56, Fax (0641) 507 219
- India** **Mettler-Toledo India Pvt Ltd**, Mumbai 400 072
Tel. (22) 2803 1111, Fax (22)2857 5071
- Italy** **Mettler-Toledo S.p.A.**, I-20026 Novate Milan
Tel. (02) 333 321, Fax (02) 356 29 73
- Korea** **Mettler-Toledo (Korea) Ltd.**, Seoul 137-130
Tel. 82-2-3498-3500, Fax 82-2-3498-3555
- Malaysia** **Mettler-Toledo (M) Sdn. Bhd.**, 40150 Selangor
Tel. (603) 7844 5888, Fax (603) 7845 8773
- Netherlands** **Mettler-Toledo B.V.**, NL-4004 JK Tiel
Tel. (0344) 638 363, Fax (0344) 638 390
- Poland** **Mettler-Toledo, Sp. z o.o.**, PL-02-822 Warsaw
Tel. (22) 545 06 80, Fax (22) 545 06 88
- Russia** **Mettler-Toledo C.I.S. AG**, 10 1000 Maskow
Tel. (095) 921 92 11, Fax (095) 921 78 68
- Singapore** **Mettler-Toledo (S) Pte. Ltd.**, Singapore 139959
Tel. 65-6890 0011, Fax 65-6890 0012
- Slovakia** **Mettler-Toledo**, SK-83103 Bratislava
Tel. (02) 4444 12 20-2, Fax (02) 4444 12 23
- Slovenia** **Mettler-Toledo, d.o.o.**, SI-1261 Ljubljana - Dobrunje
Tel. (01) 547 49 00, Fax. (01) 542 02 52
- Spain** **Mettler-Toledo S.A.E.**, 08908 L'Hospitalet de Llobregat (Barcelona)
Tel. (93) 223 76 00, Fax (93) 223 76 01
- Switzerland** **Mettler-Toledo (Schweiz) GmbH**, CH-8606 Greifensee
Tel. (044) 944 45 45, Fax (044) 944 45 10
- Thailand** **Mettler-Toledo (Thailand) Ltd.**, Bangkok 10310
Tel. (02) 723 0300, Fax (02) 719 6479
- United Kingdom** **Mettler-Toledo Ltd**, 64 Boston Rd, Leicester, LE4 1AW
Tel. 0870 066 3141 Fax: 0116 236 6399
- United States** **Mettler-Toledo, Inc.**, Columbus, OH 43240
Tel. (614) 438 4511, Fax (614) 438 4900

For all other countries

Mettler-Toledo AG
 CH-8606 Greifensee, Switzerland
 Phone +41-44-944 22 11
 Fax +41-44-944 30 60

Subject to technical changes
 © 3/2009 Mettler-Toledo AG
 Printed in Switzerland 22019081
 Global MarCom Switzerland



UC3-Line
 Unlimited connectivity
 PC-based scales
 for the retail trade



www.mt.com

For further information

Innovative Weighing Technology
 At the Point-of-Sale

METTLER TOLEDO

Management of Fresh Products

Keeping Ahead of the Competition

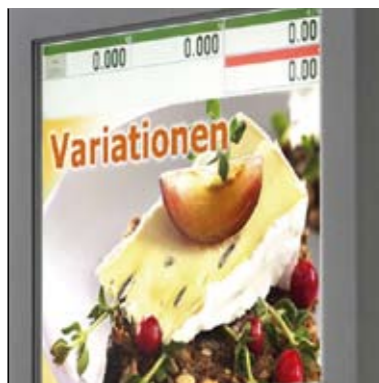
The European food retailing market is experiencing high levels of competition. Keep one step ahead of the competition – with METTLER TOLEDO as your partner in the management of fresh products.

European food retailing is undergoing something of a change, characterised by the opening up of new markets, accompanied by specialisation and differentiation in product range policies. Fresh products are increasingly becoming a key factor in competition and the most important customer loyalty instrument. When you buy PC scales from METTLER TOLEDO's

UC3-Line you'll find that they are just as robust as they are innovative. These scales also clearly demonstrate your commitment to improvements to your management of fresh products in the long term.

They can be smoothly integrated into the IT infrastructure and your goods management system or be the perfect platform for innovative

forms of advertising and active sales support for our staff. Discover the wealth of new opportunities delivered by the UC3-Line at your point-of-sale (POS). The UC3-Line makes your management of fresh products more efficient and controllable – and so makes your company and your stores more profitable!



Unlimited connectivity
UC3-Line – an overview of the key facts.
Page 4-5



Touchscreen generation
State-of-the-art touchscreen technology – for maximum operating convenience.
Page 6-7



UC3-Line
Store scale for pre-packing, service counter and self-service area.
Page 8-9



Shopping experience
Creating the desire to shop. Generating additional sales.
Page 10-11



Integration
Perfect communication and networking throughout your process chain.
Page 12-13



Services & solutions
For maximum availability: Local know-how and competence
Page 14-15

UC3-Line – more much than just a scale.

Weighing Technology for the Highest Standards

The UC3-Line combines the very latest developments in weighing technology with open PC technology. The result: Perfect communication and networking for innovative features at the POS.

UC3-Line is the latest generation of scales from METTLER TOLEDO – and it offers much more than just weighing functions. UC3-Line features Unlimited Connectivity (UC) to smooth the way to a more efficient goods management system and the generation of additional sales. As

an integrated platform for communicating with customers and advertising and as an info terminal for your staff, the UC3-Line far surpasses the limits of classic weighing technology. UC3-Line offers impressive, hygienic, intuitive touchscreen operations

and an ergonomic design which focuses consistently on the user's needs. Designed and developed for the very discerning customer, UC3-Line can easily satisfy your quality expectations for robustness, reliability and longevity.

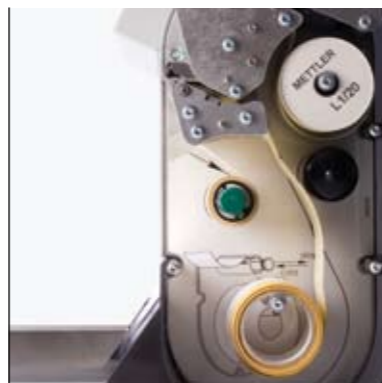


- State-of-the-art weighing technology with PC interfaces and open standards
- Fast high-performance processors plus huge RAM
- Simple networking
- Local and central management of balances and contents
- Software can be upgraded locally and remotely
- Open to applications from third-party suppliers
- Convenient operation using touchscreen
- Powerful platform for cross-selling, visual marketing and computer-assisted learning



Design reflects function

Smooth surfaces, no corners, crevices edges for dirt to accumulate in: UC3-Line features stylistic elements which reflect its clear functionality. All scales are quick and easy to clean and offer an impressively robust design.



Value Line

The low-cost entry level range to the world of UC3-Line.

- 10.4-inch user interface with TFT touchscreen technology
- Counter balances with 5.7-inch black and white customer display in STN technology, also available with the STN color display as an option



Advanced Line

The mid-range choice in the UC3-Line family.

- User interface with TFT touchscreen technology
- Standard: STN display, black and white for the customer
- Option: STN display, in color for the customer
- Sufficient capacity for optional applications like eLearning (user training)

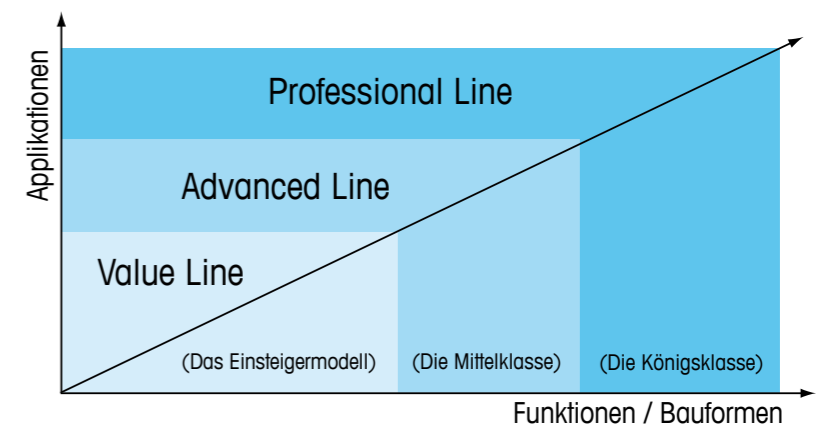


Professional Line

The crème de la crème from METTLER TOLEDO.

- Unlimited networking plus full support for applications from third-party suppliers
- User interface with TFT touchscreen technology
- Standard: TFT color display for customer, high levels of computing power at the POS, even for large ranges of fresh products and multi-media marketing in stores

The UC3-Line family



UC3-Line – receptive to new ideas at the POS.

This is the Future for the Point-of-Sale

Uncomplicated. Fast. Hygienic. Whether used in pre-packing, at the shop counter or in the self-service area: All scale from the UC3-Line use modern touchscreen technology in their operating concept.

The touchscreen user interface on the UC3-Line puts an end to the all too familiar disadvantages and limitations of classic keypads. Seasonal item or addition to the product range? It's as easy as ABC

with the UC3-Line. Tired of trying to remember PLU numbers or provisional, unsightly key labels? Consign them to history with the UC3-Line.



“ Our customers value healthy eating. The UC3-Line is my bible for menu tips and information about the products. ”



Quick item search

First enter "G", then "o" – and the result is goulash! Sales staff can use the alpha-numerical touchscreen keypad to quickly find the item they are looking for. In 85 percent of cases, staff will find the item data they are looking for by entering the first two letters.



Easy operation

Fewer operating mistakes, faster weighing. The clear and interactive touchscreen interface makes it easy for users to navigate at speed and without making mistakes. Staff who are new to the job can operate the scales just as quickly as customers on the self-service scales available in the UC3-Line.



Qualified advice

Looking for information about nutritional values, the additives in the product or details for allergy sufferers? UC3-Line interactively provides staff with important extra information about the specific item to help them make that sale. UC3-Line reinforces staff's confidence in their own advisory skills which is key to making extra sales and therefore increasing income.

UC3-Line means: Touchscreen generation. When you buy the UC3-Line, you get a user interface that can be configured just as you want with any flexible design and which is fully adapted to your individual everyday sales needs.

Key-pad and key sizes are variable thanks to touchscreen technology, item and function keys can be arranged as you wish. As a result, it's faster to operate and easier to maintain the product range.

UC3-Line –
touchscreen offers more flexibility.

The Right Scale for any Purpose

At home here: The highly varied UC3-Line model range gives you weighing technology with a touchscreen functionality for all fresh products – from pre-packing and the service counter to a self-service scale in the fruit and veg department.

Robust and innovative, the unit with perfect ergonomics and efficiency. With its UC3-Line, METTLER TOLEDO wanted to give food retailers the benefits of open networking

in all market departments – with one model range where every scale consistently takes into account the ergonomic requirements of its working environment.



UC3-Line – high-performing weighing technology for every eventuality.



HWT-A hanging scale – our favorite for the fish counter. Nothing drips on the keypad or connections, the weighing pan and housing are beautifully easy to clean. What's more, the HWT-A hanging scale isn't just at home on the fish counter. It's the ideal solution wherever space is tight or where every square metre of selling space counts. Even in self-service areas.



Labelling in pre-packing. Speed up your work with the SPCT compact scale: All models have a high-speed label printer as standard. If you want to be able to place more goods on your scale, go for the CDDT variant – a terminal without a weighing cell but with an option for connecting up an external load plate, like a floor scale.



Your goods are the star of the show! And the scale is happy to play second fiddle. The CT scales have a compact design which allows them to be easily integrated in the sales counter and ensures they never get in the way of work. Touchscreen and customer display can be adjusted.



Touchscreen technology ensures great convenience for customers weighing their own products. Use the high-quality TFT display for visual merchandising and play texts, graphics or videos about current promotional or advertising campaigns when the scale isn't being used. The scale switches straight over to the touchscreen user interface as soon as a customer places an item on the weighing pan or touches the display.



Many of the purchasing decisions taken at service counters are made spontaneously. So it's particularly important that customers are given the best advice possible at these counters. The HT and HTT models of the UC3-Line are real all-rounders. Use them to help your sales team or train your staff or promoters for special offers. The scales are perfect for switching between roles. And they will help bring in more revenue!

Best Advertising for Your Store

I like coming here, I like shopping here! Make the service counter a place where your customers feel good – arouse emotions and impress them with competent advice. UC3-Line gives you a number of functions to do this – from assisting your stores in marketing campaigns to computer-assisted learning.

Alongside the freshness of goods, sales skills and expert knowledge are the most important factors for success at the service counter. Good advice instills trust and peace of mind in the customer, results in more sales and customers are prepared to pay more.

Make proactive use of your UC3-Line scales for marketing and promotional offers and to train your staff in sales. Ensure a pleasant all-round shopping experience with enhanced quality advice and a touch of infotainment at the POS.



“ We load updates to the product range directly from head office. This is where we store the images for the items. This system guarantees us a high-quality and standard look in all stores. ”



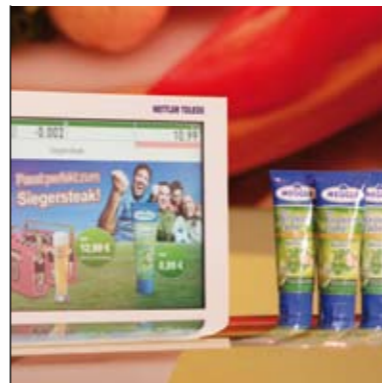
Visual merchandising

Discover how the customer display on the UC3-Line can become a dynamic advertising space! Use texts and images, with animated graphics or even video sequences to advertise current promotional and special offers. Generate extra income by renting out the displays as advertising space and making profit by offering advertising subsidies in partner campaigns.



Qualified specialist advice

Be it information on origin, ingredients or suggested recipes: UC3-Line interactively assists your sales staff during the weighing process. A fun way of giving your staff additional customer service skills. New staff are able to provide customers with qualified advice after a short training period with the help of the UC3-Line.



Interactive cross-selling

Your customer has decided to buy the steak. Now you should point out the "Grill offer" which includes garlic butter. Use UC3-Line to interactively control your advertising messages – at the POS itself! The ideal tool for encouraging impulse purchases via the customer display or for promoting up-selling strategies and special offers.



Sales training

Integrate UC3-Line in your staff training – as a virtual sales trainer and platform for computer-assisted training programs at times when the store is closed. The high-quality touchscreen serves as a screen for info texts, photos and videos which can be regularly played and updated from a central server.

UC3-Line – because it's the result that counts.

Improved Efficiency in the Scale and Store Management

Whether you are centralising content and updating master data or fully integrating this into the store-wide goods management system: UC3-Line allows you to seamlessly incorporate every single scale into your company's IT infrastructure.

Think locally, control globally: The central administration and updating of data records needed for all stores not only prevents duplicate and additional work in updating master data, it is also an important instrument for ensuring harmonious quality standards across the company.

Whether you are creating a new item from scratch, updating the touchscreen user interface to new standard design requirements applicable throughout the company or centrally loading forward prices and promotional material for special offers spanning all stores: UC3-Line

features the open PC and web technology to allow you to centrally control and manage all your services and offers. Management of goods, scales and content in one – the more efficient way to manage your stores.

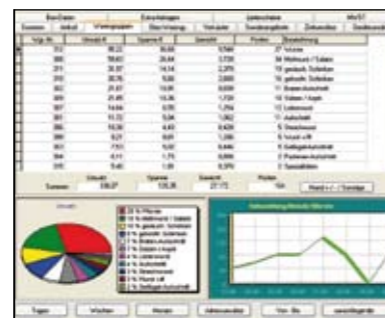


“ The UC3-Line is the key to complete integration of the sales counter in our applications for goods management and storage logistics. ”



Managing content

Be it in the form of item photos or tables of nutritional values, information for allergy sufferers, suggested recipes or additional texts about items for tickets, labels and managing loyalty points: METTLER TOLEDO is happy to help you set up and individualise your own content database.



Management of fresh products

Are sales dropping, are you worried about fresh produce going off? The local scale management system allows you to respond quickly to drops in sales at any time and introduce local temporary price adjustments and special offers.



Reporting

UC3-Line supplies you with detailed figures for your statistics and reporting systems. These simplify future planning and controlling of quotations. UC3-Line also helps you satisfy legal requirements for documenting certificates of origin, complying with information on use-by-dates and tracking goods.



METTLER TOLEDO is a member of the Association for Retail Technology Standards (ARTS) and is actively involved in the development and introduction of open technology standards. Standards which enable you to more efficiently administer your goods management system and better integrate your business processes, all at lower technology costs.

UC3-Line –
because you want to plan the
management of fresh products!

Partner to the Retail Trade with Competence and Know-how

**Security plus investment protection from the word go:
By working with METTLER TOLEDO you are guaranteed
weighing technology that is both innovative and high
performance – as well as an outstanding service and
sales network throughout Europe.**



Individual solutions, tailored service: As a partner to the retail trade, METTLER TOLEDO will assist you in realizing your objectives and concepts. Benefit from our expertise and years of experience in the European retail market.

Whether regional or international retail: METTLER TOLEDO is your competent and trustworthy solutions provider with a dense service network across Europe. This network is strong enough to quickly and reliably help you move towards your goal even when working on major projects with tight timetables.

// Remote maintenance solves the problem of access issues. Not only is it more cost-effective for us but it's also the fastest way to rectify faults. //

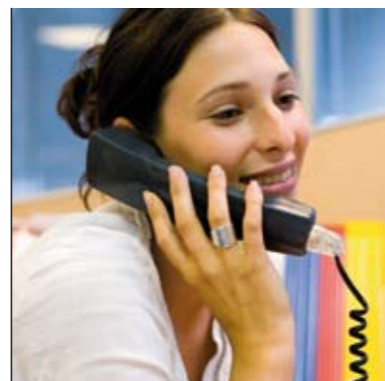
Project management:

- Consulting
- Individual adaptations
- Installation
- Integration in the goods management system
- Maintaining content
- Service module



Service modules

UC3-Line is synonymous with state-of-the-art weighing technology with outstanding precision and reliability. In the unlikely event of you suffering a functional problem: Our tailor-made service concepts guarantee you rapid rectification and restoration of system availability, tailored to your individual needs.



Remote maintenance

It's not always necessary for a service engineer to visit your premises in order to remedy a fault. So take a look at our service offers for fault rectification by remote maintenance. It's not rare for a customer to simply call the METTLER TOLEDO service center responsible, and everything is up and running again shortly after. Fast and efficient.



Made in Europe

All scales from the UC3-Line are developed and manufactured in Europe. We also have an extensively stocked central warehouse in the Swiss town of Greifensee near Zurich, at the heart of Europe. This means we are easily contactable and not far away should you need a spare part to rectify a fault.



Complete solutions

A one-stop shop: Weighing technology from METTLER TOLEDO covers your entire product chain. On request we will help you with tailored complete solutions, ranging from receiving the goods, pre-packing, the self-service area and counter sales right up to scales at the till.

UC3-Line –
Service with peace of mind.

UC3-Line

Equipment and Model Variants

Functions available as options

- Proof of origin
- Promotions
- Receipt forwarding
- Till functions
- Electronic cash
- Weighing of money
- Support for third-party supplier applications (all UC3 models of the Professional Line)

Functions for pre-packing

Automatic or manual weighing with or without push button, batch mode, re-weighing, price reverse projection with label, total or two labels

Functions for service counters

Fast service, continuous service (online tickets), labelling of prices, large-scale sales, interactively designed product, department, tare and salesperson selection



UC3 CT-P
Flat compact scale for the service counter and pre-packing, very easy to integrate into the sales counter.



UC3 GTT-P
Total convenience for customers weighing their own products. Also available with a camera for automatic product detection as an option.



UC3 GLT-P b
Self-service scale with interactive touchscreen user prompts and extra-large 17-inch user display.

Available in black and silver.



UC3 HTT-P b
Our classic for the service counter, with a large 12.1-inch TFT customer display for visual merchandising – and more!

Available in black and silver.



UC3 HT
The all-round performer at the service counter, with a 5.7-inch customer display.



UC3 HWT-A
Hanging balance from the Advanced Line, ideal for the fish counter – or as space-saving self-service scale.



	HTT-P	HT-P	HT-A	HT	CT-P	CT-A	CT	HWT-A	GTT-P	GTT-A	GLT-P	SPCT-P	SPCT-A	SPCT	CDDT-P	CDDT-A	CDDT
Service counter	XXX	XXX	XXX	XXX	XXX	XXX	XXX	XXX									
Pre-packing	XX	XX	XX	XX	XX	XX	XX	XX	XX	XX	XX	XXX	XXX	XXX	XX	XX	XX
Self-service area	XX	XX	XX	XX	XX	XX	XX	XX	XXX	XXX	XXX	XX	XX	XX			
Performance features																	
Online Help and info texts	●	●	●	●	●	●	●	●	●	●	●	●	●	●	●	●	●
Illustrations	XXX	XXX	XX	X	XXX	XX	X	XX	XXX	XX	XXX	XXX	XX	X	XXX	XX	X
Item-related functions	●	●	●	●	●	●	●	●	●	●	●	●	●	●	●	●	●
Comprehensive cancellation functions	●	●	●	●	●	●	●	●	●	●	●	●	●	●	●	●	●
Graduated price functionality (10 levels)	●	●	●	●	●	●	●	●	●	●	●	●	●	●	●	●	●
Comprehensive taring options	●	●	●	●	●	●	●	●	●	●	●	●	●	●	●	●	●
Efficient, freely configurable reporting	●	●	●	●	●	●	●	●	●	●	●	●	●	●	●	●	●
Inventory (up to 9 types of inventory)	●	●	●	●	●	●	●	●	●	●	●	●	●	●	●	●	●
Support for third-party supplier applications	●	●	-	-	●	-	-	-	●	-	●	●	-	-	●	-	-
Proof of origin / promotions / ticket forwarding	●●●	●●●	●●●	●●●	●●●	●●●	●●●	●●●	●●●	●●●	●●●	●●●	●●●	●●●	●●●	●●●	●●●
Till functions / electronic cash** / weighing of money*	●●●	●●●	●●●	●●●	●●●	●●●	●●●	●●●	●●●	●●●	●●●	●●●	●●●	●●●	●●●	●●●	●●●
Additional multi-media applications																	
Flash animations for training and videos	XXX	XXX	XX	-	XXX	XX	-	XX	XXX	XX	XXX	XXX	XX	-	XXX	XX	-
Coupons	●	●	-	-	●	-	-	-	●	-	●	●	-	-	●	-	-
Cross merchandising with partner applications	XXX	XXX	XX	-	XXX	XX	-	XX	XXX	XX	XXX	XXX	XX	-	XXX	XX	-
TFT touchscreen																	
Touchscreen size in inches (cm)	12.1" (30.7)	12.1" (30.7)	12.1" (30.7)	10.4" (26.4)	10.4" (26.4)	10.4" (26.4)	10.4" (26.4)	12.1" (30.7)	12.1" (30.7)	12.1" (30.7)	17" (43.2)	10.4" (26.4)	10.4" (26.4)	10.4" (26.4)	10.4" (26.4)	10.4" (26.4)	10.4" (26.4)
Resolution	800 x 600	800 x 600	800 x 600	800 x 600	800 x 600	800 x 600	800 x 600	800 x 600	800 x 600	800 x 600	1280 x 1024	800 x 600	800 x 600	800 x 600	800 x 600	800 x 600	800 x 600
Free interface design, item selection using PLU-number, alpha-numerical search function, presets	●	●	●	●	●	●	●	●	●	●	●	●	●	●	●	●	●
Customer indicator																	
Customer display	●	●	●	●	●	●	●	●	-	-	-	-	-	-	●	●	●
Technology	TFT	TFT	STN	STN	TFT	STN	STN	STN	-	-	-	-	-	-	TFT	STN	STN
Size in inches (cm)	12.1" (30.7)	5.7" (14.5)	5.7" (14.5)	5.7" (14.5)	5.7" (14.5)	5.7" (14.5)	5.7" (14.5)	5.7" (14.5)	-	-	-	-	-	-	5.7" (14.5)	5.7" (14.5)	5.7" (14.5)
black-white / color	- ●	- ●	● ●	● ●	- ●	● ●	● ●	● ●	-	-	-	-	-	-	- ●	● ●	● ●
Printer																	
54 mm receipt / 54 mm labels / 72 mm labels	● ● -	● ● -	● ● -	● ● -	● ● ●	● ● ●	● ● ●	● - ●	- ● -	- ● -	- ● -	- ● ●	- ● ●	- ● ●	● ● ●	● ● ●	● ● ●
54 mm double printer (receipts and labels)	●	●	●	●	-	-	-	-	●	●	●	-	-	-	-	-	-
54 mm liner-less	●	●	●	●	●	●	●	●	-	-	-	●	●	●	●	●	●
Fast speed of printing (125 mm/s), 8-dot resolution, logo print, freely definable labels	●	●	●	●	●	●	●	●	●	●	●	●	●	●	●	●	●
Data storage																	
Hard disk at least 40 GB	●	●	●	-	●	●	-	●	●	●	●	●	●	-	●	●	-
Compact Flash at least 256 MB	-	-	-	●	-	-	●	-	-	-	-	-	-	●	-	-	●
RAM 256 MB / 512 MB / 1 GB	● ● ●	● ● ●	● ● -	● - -	● ● ●	● ● -	● - -	● ● -	● ● ●	● ● -	● ● ●	● ● ●	● ● -	● - -	● ● ●	● ● -	● - -
Operating system																	
WEPOS / Linux / Windows CE	● ● -	● ● -	● ● -	- - ●	● ● -	● ● -	- - ●	● ● -	● ● -	● ● -	● ● -	● ● -	● ● -	- - ●	● ● -	● ● -	- - ●
Black color variant	HTT-P b.	-	-	-	-	-	-	-	-	-	-	-	-	-	-	-	-

Key XXX = very suitable XX = suitable X = not suitable ● = standard equipment ● = available as option - = not available/not suitable

* Only combined with fill functions, only available in Germany ** Only combined with fill functions, not available with the Value Line