

**RELIABLE CASH HANDLING
IN SUPER MARKETS,
PHARMACIES,
FILLING STATIONS AND
OTHER LOCATIONS**



ELECTRICAL CASH DRAWERS

- precision work
- electrical locking mechanism (patented)
- hardware component for computerized POS-terminals
- compatible with any personal computer, printer or scale



with inserts designed to also accept euro-coins and -notes

Mogler®



RELIABILITY AT POINT OF SALE

Retailers are well aware of the frustration caused by a faulty cash drawer during peak trading times.

Wherever retailers request a robust and highly reliable cash drawer, products from Mogler are a preferred choice. Among many other applications Mogler cash drawers can be found in department-stores, super-markets, convenience shops, filling stations and pharmacies.

All cash drawers can easily be linked to POS-systems, printers, scales and ECR. The experience of more than 70 years enables Mogler engineers to design and produce cash drawers for intensive everyday use.

Retailers appreciating top quality will repeatedly decide to buy cash drawers from Mogler. Our products are designed for functionality. They blend in with any check-out and/or POS-system.

A wide range of different models are on offer to our customers, thus providing suitable solutions for almost any operation requiring cash-handling equipment.

Pictures on front page

left: model 41-E5

middle: model 45-E with media slot (optional)

right: model 54 E1

ELECTRICAL CASH DRAWERS

The following paragraphs will explain the durability of Mogler products in more detail:

- Standard in all Mogler cash drawers: steel ball bearing runners for smooth and reliable operation
- Patented locking mechanism
- 3-position cylinder lock, allowing manual opening in case of failure
- Micro-switch for status check optional
- Metal sheets have the following thickness: base plate: 1,5 mm, drawer: 0,75 mm, housing: 1mm.
- Surface is scratch resistant due to process of powder coating;
- Standard colours: white, anthracite, grey and black. Any other colour on request.
- The designation of cash-drawer models is self-explanatory: E stands for electro-mechanical lock, and the preceding number stands for the width of the drawer in centimetres. Exception: the new cash drawer Euro-Cash 2002, designed for dual currency requirements. Designation EC 2002. Its removable insert is described on page 6.



28 E



35 E2



37 E-KE/D with media slot (optional) and deposit of lid (optional)



41 E

model	width (mm)	depth (mm)	height (mm)	choice of coin comp.	or MiNi comp.	note comp.	comp. coin rolls/ receipts	removable drawer-insert
Electrical cash drawers								
28 E	280	400	110	6/8	245	4	1/1	–
35 E1	350	425	110	6/8	315	4	1/1	–
35 E2	350	325	110	6/8	315	4	1/–	–
41 E	410	425	110	8	375	6	1/1	–
45 E	450	450	110	8	375	6	1/1	–
37 E-KE	366	425	110/120 ¹	8	RE 800	4 lay-flat	1/–	KE 84
37 E-KE/D	366	425	110/120 ¹	8	RE 800	4 lay-flat	1/–	KE 84 D
41 E-KE	410	425	110	8	RE 800	4 lay-flat	1/–	KE 84
41 E-KE/D	410	425	110	8	RE 800	4 lay-flat	1/–	KE 84 D
EC 2002 E	410	400	100	8/16	375	6/12	1/–	KE EC D
45 E-KE	450	450	110	8	RE 800	4 lay-flat	1/–	KE 84
45 E-KE/D	450	450	110	8	RE 800	4 lay-flat	1/–	KE 84 D
41 E-5	410	425	110	8	375	5 lay-flat	1/–	–
45 E-5	450	450	110	8	375	5 lay-flat	1/–	–
Electrical cash drawers with reduced depth of installation								
54 E1	542	194	92	6/8	315	4	1/–	–
54 E2	542 (579) ²	194	110	6/8	315	4	1/–	–

¹ version with deposit of lid

² with mounting angle

Electrical values for solenoids

V DC	current mA	resistance Ohm	tolerance %	duty cycle %
12	400	30	10	100
24	800	30	10	40
24	200	130	10	100
32	250	130	10	50



Euro-Cash 2002 E



54 E2

INTERFACE KITS

Interface kits are available in two versions:

- connected to the mains: as external component with optocoupler, transmitting defined signals, supplied by serial interface (RS 232) or parallel interface (Centronics).

Interface kit	length (mm)	width (mm)	height (mm)
external interface kits			
RS 232 V 24	100	50	40
Centronics	120	65	40



RS 232

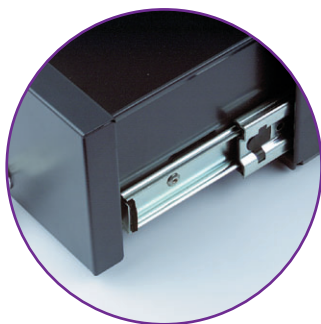
Centronics

Inserts for cash

A variety of compartments for coins (ME) and notes (BE), Inkiess type coin holders (Mini) is available. Also removable and lockable inserts of type KEC and KE 84. All inserts are prepared for the euro currency, see page 6.

Ball bearing runners

Steel ball bearing runners guarantee a smooth opening of drawers. Resulting advantages for the user: reduction of physical stress, 100% access to insert, thus fully utilizing the space available and saving costly counter-space.



The age of Euro-Cash in the year 2002

The period of euro cash will start on first January 2002. The new European currency will consist of 8 coins and 7 notes. All standard inserts of Mogler-drawers are already prepared for the changeover.

Dimensions of euro-notes			
DM	[mm]	Euro	[mm]
5,-	62 x 122	—	—
10,-	65 x 130	5,-	62 x 120
20,-	68 x 138	10,-	67 x 127
50,-	71 x 146	20,-	72 x 133
100,-	74 x 154	50,-	77 x 140
200,-	77 x 162	100,-	82 x 147
500,-	80 x 170	200,-	82 x 153
1000,-	83 x 178	500,-	82 x 160



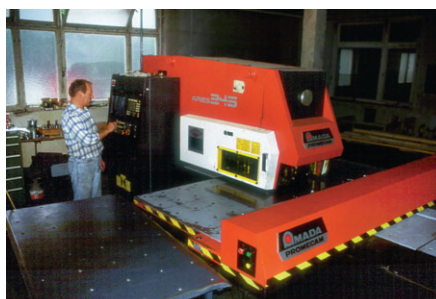
MOGLER STANDS FOR RELIABILITY AND QUALITY

Mogler cash drawers have been manufactured in Heilbronn, Germany, since 1921 and within the industry have gained a reputation for durable products as well as excellent craftsmanship.

Many years of experience in the design and manufacture of cash-drawers have led to Mogler being recognized as one of the leading suppliers in this industry.



Mogler is an independent German company, located in the Southern part of the country, traditionally known for creativity and fine craftsmanship. Due to the company's flexible approach with regard to design and production special requests from customers are always welcome.



Mogler is permanently controlling quality in all stages of production from development to final mounting. Cash-drawers are manufactured on NC-controlled equipment.

A high percentage of the raw material used in a Mogler cash drawer can be recycled.



USEFULL EQUIPMENT FOR STORAGE OF COINS AND NOTES

When selecting inserts, note- and coin-compartments customers may choose from a wide range of models, all designed for quality and ease of operation.



New: insert type KEC. The solution for dual currency requirements. It is removable and lockable. A unit of 8 coin compartments (type ME 375), removable from the insert, is standard as well as 2 units of note compartments of type BE 187 with 6 oblique note compartments (2 x BE 187).



The insert type KE 84 is removable, the version with lockable lid being KE 84 D. It offers 4 lay-flat note compartments, equipped with rugged metal clips and 8 as a unit removable coin compartments.



The cassette RE 84 (Inkiess) has 4 lay-flat note compartments and 8 coin counting bars (available in many different currencies and soon in euro). It is transportable but not lockable.



The coin compartments are removable from the tray as a unit. They have been designed for frequent use and rapid transactions. The models ME 245 and 315 offer a choice of 6 or 8 compartments. The models ME 375 and 320 both have 8 compartments. In preparation for the euro introduction period: ME 375 with 2x 8 compartments for dual currency needs.



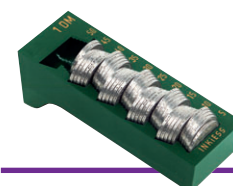
The note compartments are of type BE 145 and BE 187. Each of them has 3 compartments which can be brought up to 6 by additional dividers.



The separating device BT 1 can subdivide lay-flat note-compartments in order to collect a larger number of different notes.



The holding device BK 1 allows notes to be deposited outside of the cash-drawer until the change transaction has been completed. A sticking strip fixes it to the cash-drawer.



The coin holders type MINI from Inkiess provide an exact and instantaneous information of the amount of cash available.

Apart from electrical cash-drawers Mogler manufactures a wide range of mechanically operated drawers. Please ask for our catalogue of mechanical cash-drawers.

We reserve the right to make technical changes without prior notice.

For further information, please do not hesitate to contact us.

Mogler-Kassen GmbH

Obere Mühle 17
D-74906 Bad Rappenau-Bonfeld
Tel. (07066) 994410
Fax (07066) 994411

Internet <http://www.mogler.de>
eMail vertrieb@mogler.de