

# CITIZEN

Micro HumanTech

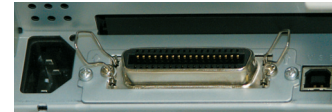
## Great performance - Small price CT-S310: breaking the mould for POS printer pricing



Standard type

### Dual Interface -

USB is default in addition to serial or parallel interface boards. This makes the CT-S310 a future-proof investment.



### Internal Power Supply -

All 80mm POS printers from Citizen offer an internal power supply. The CT-S310 has an detachable one. Once taken off it is the smallest POS printer in its class.

## CITIZEN CT-S310

POS

### Applications

- Receipt
- Coupon
- Ticket
- Daily report
- Kitchen
- Delivery slip
- Barcode
- Weigh scales
- Kiosk



### Easy paper loading

Just drop paper in and close the top cover.



Available in black



Vertical solution

# CITIZEN

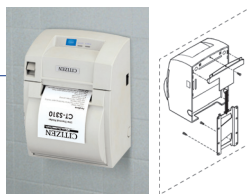
Micro HumanTech

## Options

### Wall Mount kit

Available for external AC adapter type only.

WALL-CTS300



### Splash proof cover

Available for built-in AC adapter type only.

SPROOF-CTS300



### Interface cards



Parallel (TA66811-0)



Serial (TB66832-00F)

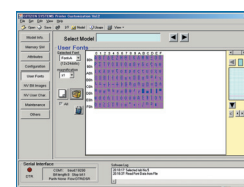
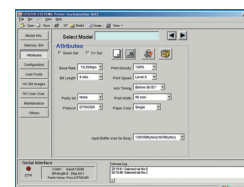
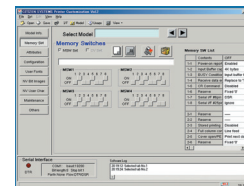
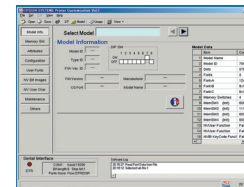


Ethernet (950053-00)

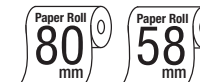
## Specifications

<b>Printing method</b>	Line thermal dot printing
<b>Printing width</b>	80mm paper: 72mm/576 dots 58mm paper: 48mm/384 dots
<b>Dot pitch</b>	8 x 8 dots/mm (203 dpi x 203 dpi)
<b>Printing speed</b>	Max. 150mm/sec. (23.6 lines/sec.)
<b>Number of columns</b>	80mm paper: Font A-48/42 columns, Font B-64/56 columns, Font C-72/63 columns 58mm paper: Font A-32/30 columns, Font B-42/40 columns, Font C-48/45 columns
<b>Character size (WxH)</b>	Font A: 1.25 x 3.00mm (12 x 24 dots) Font B: 0.88 x 2.13mm (9 x 17 dots) Font C: 0.88 x 2.00mm (8 x 16 dots)
<b>Character table</b>	Code page 437, 850, 852, 8 57, 858, 860, 863, 864, 865, 866, Katakana, WPC1252, Thai code 18
<b>Barcode type</b>	UPC-A/E, JAN-13/8, ITF, Code 39, Code 128, CODABAR, Code 93
<b>Line spacing</b>	4.23mm (1/6 inch); can be set by a command.
<b>Paper</b>	Thermal paper roll, 80 or 58mm (W)x Ø83mm
<b>Interface</b>	Parallel (IEEE 1284) & USB, Serial (RS-232C) & USB
<b>Input buffer</b>	4K bytes / 45 bytes
<b>NV user memory</b>	256K bytes
<b>Drawer kick-out</b>	2 Drawers
<b>Power supply</b>	DC 24V±7%
<b>AC adapter</b>	Input: AC 100-230V, 50/60 Hz, 120VA Output: DC 24V, 2A DC 24V, ± 7% (DC power supply type)
<b>Weight</b>	Approx. 1.2kg
<b>Dimensions (W x D x H)</b>	Standard type: 145x195x159mm External AC adapter type: 145x195x121mm
<b>Operating environment</b>	5~40°C, 35~85% RH
<b>Storage environment</b>	-20~60°C, 10~90% RH
<b>Reliability</b>	Thermal head: 100,000,000 pulses or 100km Auto cutter: 1,000,000 cuts
<b>EMC and safety standards</b>	UL, C-UL, FCC Class A, TUV-GS, CE marking

## Customization Software



## Features



- 150mm/sec. high-speed printing
- 80/58mm selectable paper width
- Easy paper loading
- Cutter (full/partial)
- Optional interface cards
- USB is default in addition to Serial or Parallel interface board
- Built-in AC adaptor
- Black mark function (option)
- Cash drawer kick-out
- Bitmap data registration (NV memory)
- Barcode printing
- ESC/POS compatibility
- Page mode
- Two color printing
- Smoothing font
- Easy customization by software
- Available in white or black
- Driver: Windows2000/XP/Vista/2003 Server, OPOS 1.8, CUPS

## Type Classification

CT-S310 S RS E WH M1

1) 2) 3) 4) 5) 6)

### 1) Model type

CT-S310

### 2) Power supply

A: External AC adapter  
S: Built-in power supply

### 3) Interface

PA: Parallel (IEEE1284) & USB  
RS: Serial (RS-232C) & USB  
UB: USB

### 4) Character set

U: USA  
E: Europe

### 5) Body case color

WH: Cool white  
BK: Black

### 6) Label/Black mark

None: Standard (No sensor)  
M1: Left side black mark  
M2: Right side black mark