

CITIZEN

Micro HumanTech

Top of the class More features for reliable printing



CT-S601
(available in black or white)

LED operation panel

The three colour LED indicates the printer's status, types of errors and messages.

Toolfree maintenance

Paper jam? No problem for the CT-S601. One hand grip and the cutter is released automatically. No tool is needed. Even if the long-life cutter ever needs to be exchanged. Thanks to it's Snap-In design this only takes 30 seconds.

Internal Power Supply

All 80mm POS printers from Citizen offer an internal power supply.

CT-S601

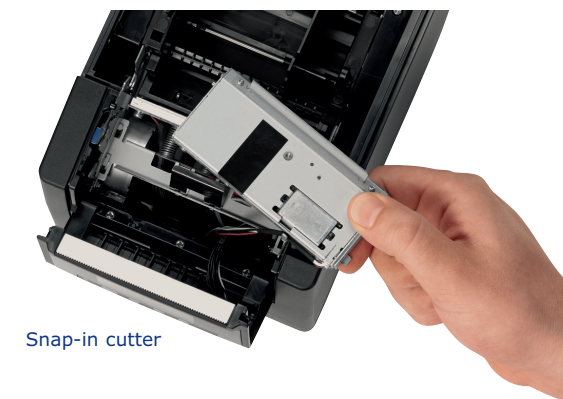
POS

Applications

- Receipt
- Coupon
- Ticket
- Daily Report
- Kitchen
- Delivery slip
- Barcode
- Weigh scales
- Kiosk
- Queue management



Operation panel



Snap-in cutter

CITIZEN

Micro HumanTech

Accessories

Interface Connections

Serial IF1-RS01
 Parallel IF1-PA01
 USB IF1-UB01
 Powered USB IF1-PU01

USB incl. USB hub IF1-HU01
 Ethernet (SEH) IF1-ES01
 Ethernet (Standard) IF1-ET01

Specifications

Printing method	Line thermal dot printing
Printing width	80mm/640 dots, 72mm/576 dots, 64mm/512 dots, 54.5mm/436 dots, 54mm/432 dots, 52.5mm/420 dots, 48mm/384 dots, 45mm/360 dots, 48.75mm/390 dots, 68.25mm/546 dots
Dot pitch	8 x 8 dots/mm (203 dpi)
Printing speed	Max. 200mm/s (print density 100%), 1600 dot-lines/s
Number of columns	83mm paper: Font A - 53, Font B - 71, Font C - 80, 80mm paper: Font A - 48, Font B - 64, Font C - 72, 60mm paper: Font A - 36, Font B - 48, Font C - 54, 58mm paper: Font A - 35, Font B - 46, Font C - 52
Character size (WxH)	Font A: 1.50 x 3.00mm (12 x 24 dots), Font B: 1.13 x 2.13mm (9 x 17 dots), Font C: 1.00 x 2.00mm (8 x 16 dots)
Character table	Alphanumeric, international, PC437/850/852/857/858/860/863/864/865/866/WPC1252/katakana/Thai code 18
Barcode type	UPC-A/E, JAN-13/8, Code 39, Code 128, CODABAR, Code 93, PDF417, QR Code
Logo registration/print	384 KB (capable of storing user-defined characters and logos)
Line spacing	4.23mm (1/6 inch), can be set by command
Paper	Width 83mm/80mm/60mm/58mm (all +0/-1mm) Diameter maximum 83mm Thickness 65-75µm (core tube diameter: inner 12mm/outer 18mm) 75-150µm (core tube diameter: inner 25.4mm/outer 32mm) Recommended Paper TF-50KS-E-2D from Nippon Paper, PD150R or PD160R from Ohji Paper, PA220AG, HP220A, HP220AB-1, F230AA, P220AB, or PB670 (2-color paper) from Mitsubishi Paper
Interface	Serial (RS-232C compliant), parallel (IEEE 1284 compliant), USB, USB with hub, Ethernet, powered USB
Input buffer	4K bytes/45 bytes
Drawer kick-out	2 drawers
Operation panel	3 LED's, Feed button
Power supply	Input: AC 100 to 240V, 50/60 Hz, 150 VA, Output: DC 24, 2.1 A
Weight	CT-S601S: Approx. 2 kg, CT-S601A: Approx. 1.6 kg
Dimensions (W x D x H)	CT-S601S: 145 x 192 x 148 mm, CT-S601A: 145 (W) x 192 (D) x 120 (H) mm
Operating environment	5 to 45°C, 10 to 90% RH (no condensation)
Storage environment	-20 to 60°C, 10 to 90% RH (no condensation)
Reliability	Print head life: 150km, 200 million pulses (at normal temperature and humidity using recommended paper), Auto cutter life: 2 million cuts (at normal temperature/humidity, using recommended paper and paper thickness)
EMC and safety standards	UL, C-UL, FCC Class A, TUV-Bauart, CE Marking

Type Classification

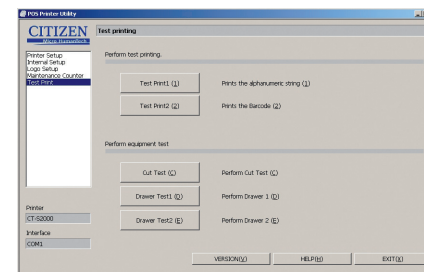
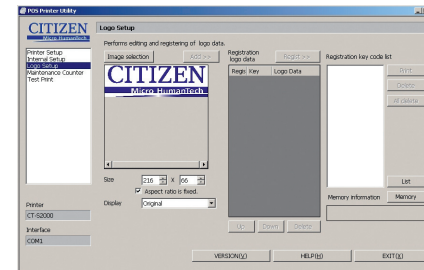
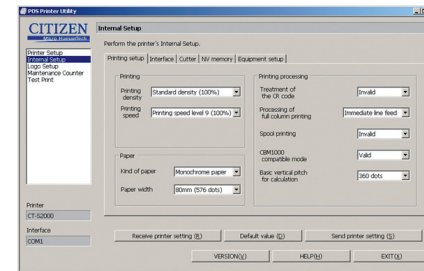
CT-S601S 3 RS E BK P
 1) 2) 3) 4) 5) 6) 7)

- | | | |
|--|--|---|
| 1) Model type
CT-S601 | 2) Power supply
DC: No power source
S: Built-in power supply type
A: AC adapter type | 3) Paper width
3: 3 inch (80/83 mm)
2: 2 inch (58/60 mm) |
| 5) Market:
J: Japanese
E: Europe/Asia
U: North America
C: China | 6) Body case color
WH: White
BK: Black
GR: Gray | 7) PNE sensor
No
P: PNE sensor |



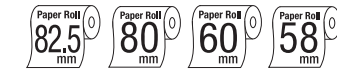
Exchangeable interfaces

Customization Software



- 4) Interface**
 PA: Parallel
 RS: Serial RS-232C
 UB: USB only
 UH: USB with hub
- ET: Ethernet (standard type)
 ES: Ethernet (multi-function type)
 UP: Powered USB

Features



- 200mm / sec high-speed printing
- 82,5/80/60/58 mm selectable paper width
- Easy paper loading
- Auto retracting Cutter (full/partial)
- Snap-in cutter
- Operation panel with 3 LED's and feed button
- Built-in buzzer
- Top paper exit
- Paper roll capacity Ø 83mm
- Exchangeable interface cards
- Built-in AC adaptor
- Cash drawer kick-out
- Bitmap registration (NV memory)
- Barcode printing
- ESC/POS compatibility
- Page mode
- Two color printing
- Smoothing fonts
- Available in white, black or dark grey (option)
- Driver: Win2000/XP/Vista/2003 Server, OPOS, Java POS, CUPS
- Utility software: Printer customization software, Receipt Layout Designer